

# Technical Document

## **Niagara AX to N4 Migration Guide**

**May 29, 2023**



# Niagara AX to N4 Migration Guide

## **Tridium, Inc.**

3951 Westerre Parkway, Suite 350  
Richmond, Virginia 23233  
U.S.A.

## **Confidentiality**

The information contained in this document is confidential information of Tridium, Inc., a Delaware corporation ("Tridium"). Such information and the software described herein, is furnished under a license agreement and may be used only in accordance with that agreement.

The information contained in this document is provided solely for use by Tridium employees, licensees, and system owners; and, except as permitted under the below copyright notice, is not to be released to, or reproduced for, anyone else.

While every effort has been made to assure the accuracy of this document, Tridium is not responsible for damages of any kind, including without limitation consequential damages, arising from the application of the information contained herein. Information and specifications published here are current as of the date of this publication and are subject to change without notice. The latest product specifications can be found by contacting our corporate headquarters, Richmond, Virginia.

## **Trademark notice**

BACnet and ASHRAE are registered trademarks of American Society of Heating, Refrigerating and Air-Conditioning Engineers. Microsoft, Excel, Internet Explorer, Windows, Windows Vista, Windows Server, and SQL Server are registered trademarks of Microsoft Corporation. Oracle and Java are registered trademarks of Oracle and/or its affiliates. Mozilla and Firefox are trademarks of the Mozilla Foundation. Echelon, LON, LonMark, LonTalk, and LonWorks are registered trademarks of Echelon Corporation. Tridium, JACE, Niagara Framework, and Sedona Framework are registered trademarks, and Workbench are trademarks of Tridium Inc. All other product names and services mentioned in this publication that are known to be trademarks, registered trademarks, or service marks are the property of their respective owners.

## **Copyright and patent notice**

This document may be copied by parties who are authorized to distribute Tridium products in connection with distribution of those products, subject to the contracts that authorize such distribution. It may not otherwise, in whole or in part, be copied, photocopied, reproduced, translated, or reduced to any electronic medium or machine-readable form without prior written consent from Tridium, Inc.

Copyright © 2023 Tridium, Inc. All rights reserved.

The product(s) described herein may be covered by one or more U.S. or foreign patents of Tridium.

# Contents

<b>About this Guide .....</b>	<b>5</b>
Document change log .....	5
Related documentation .....	6
<b>Chapter 1 Migration overview .....</b>	<b>9</b>
Why a migration tool? .....	9
Platform compatibility .....	10
Platform resource requirements .....	11
Recommended minimum resources by controller type .....	11
Checking for minimum resource requirements .....	12
Driver and application support .....	13
Wire compatibility .....	14
Platform and station file systems .....	16
Supervisor homes .....	17
Controller homes .....	18
Migration workflow process .....	25
<b>Chapter 2 Migration tasks .....</b>	<b>29</b>
Preparing platforms for migration .....	29
Certificate export .....	29
Exporting the certificates .....	29
Configuring a station to migrate users .....	30
Relocating the Kerberos keytab file .....	30
Station backups .....	31
Secure license files .....	34
Run the migration tool .....	35
About the migration tool .....	35
Running the migration tool .....	38
Migration tool command usage .....	39
Migrating modules made with the ProgramModule component .....	41
Migration details .....	46
Migration execution .....	46
Migration report (log file) .....	47
Post-migration database tasks .....	47
Modifying Program objects .....	48
Considerations if a station functions as an oBIX server .....	49
Preliminary checkout of migrated stations .....	50
Upgrade/convert platforms and install stations .....	50
Copying the Supervisor station .....	51
Performing station cleanup .....	53
Controller conversion .....	53
Downgrading controllers .....	58
<b>Chapter 3 System verification .....</b>	<b>61</b>
Non-default environment files .....	61

Verify station-to-station communications .....	61
Provisioning notes .....	62
Verify Supervisor to controller platform daemon communications .....	62
Provisioning considerations when JACE controllers remain .....	63
Station User notes in migrated stations .....	64
Permissions moved to Roles .....	65
Authentication is user-specific .....	66
<b>Chapter 4 Migrating Niagara Enterprise Security stations .....</b>	<b>67</b>
Upgrading devDriver-based video drivers .....	68
Mapping Supervisor cameras to AX controllers before migration to N4 .....	69
Preparing the BackupService .....	71
Backing up by creating a distribution file .....	72
Migrating each station .....	73
Copying the migrated files .....	73
Setting up the Supervisor's database password .....	74
Creating and updating the HSQL database password .....	75
Configuring network device passwords .....	76
Deleting the old certificates .....	77
Reconnecting the Supervisor and remote stations .....	78
Restoring the BackupService schedules .....	79
<b>Chapter 5 Connecting a Supervisor station to a legacy controller station .....</b>	<b>81</b>
2. Adding a remote controller 2.3 station .....	81
3. Logging in to the Supervisor from the controller .....	82
4. Connecting from the Supervisor to the NiagaraAX-3.8 legacy security station .....	84
<b>Chapter 6 Migration reference .....</b>	<b>85</b>
Imports .....	85
API changes .....	85
Primitives .....	85
Security Manager .....	86
File reading/writing .....	86
Runtime.exec() .....	86
Example Program object fix .....	86

## About this Guide

This topic contains important information about the purpose, content, context, and intended audience for this document.

### Product Documentation

This document is part of the Niagara technical documentation library. Released versions of Niagara software include a complete collection of technical information that is provided in both online help and PDF format. The information in this document is written primarily for Systems Integrators. To make the most of the information in this book, readers should have some training or previous experience with Niagara software, as well as experience working with JACE network controllers.

### Document Content

This guide provides information about migration of NiagaraAX system running AX-3.8 to Niagara 4 system running N4.0, and has the following main sections.

- [Chapter 1 Migration overview, page 9](#)  
Provides requirements, restrictions, compatibilities between NiagaraAX and Niagara 4, background on the need for migration (including major differences), and a general migration workflow process.
- [Chapter 2 Migration tasks, page 29](#)  
Provides tasks to start migrating stations, including collecting AX-3.8 station archives, running the N4 migration tool, migrated database cleanup, preliminary N4 station checkout, and installation of Niagara 4 software and controller upgrades.
- [Chapter 3 System verification, page 61](#)  
Explains system areas that may need attention and possible configuration immediately following the installation of Niagara 4 upgrades and migrated stations.
- [Chapter 6 Migration reference, page 85](#)  
Contains some details on Program object (component) changes in N4 , along with an example "Program object fix".
- [Chapter 4 Migrating Niagara Enterprise Security stations, page 67](#)  
Describes how to migrate your NiagaraAX-3.8 based security Supervisor and controller stations to Niagara 4.8 based security stations.
- [4. Connecting from the Supervisor to the NiagaraAX-3.8 legacy security station, page 84](#)  
Describes how you can connect and join Niagara Enterprise Security 2.4 stations to Niagara Enterprise Security 2.3 JACE-6 controllers.

## Document change log

### May 29, 2023

- Updated "Communications support between Niagara 4 and NiagaraAX" table in Wire Compatibility topic
- Added procedure for "N4 existing station" to the "Creating and updating the HSQL database password" topic.
- Added a single reference to the JACE-9000.

### February 6, 2023

Added procedure for "N4 existing station" to the "Creating and updating the HSQL database password" topic.

**May 29, 2023****December 10, 2020**

Rewrote the last sentence of "Connecting from the Supervisor to the NiagaraAX-3.8 legacy security station" topic.

**November 2, 2020**

Combined "Migration workflow diagram" topic with "Migration workflow process" topic and "Migration workflow diagram" topic deleted from book map.

**June 1, 2020**

- Edited certificate descriptions and procedures.
- Confirmed upgrade procedures for Niagara Enterprise Security stations.
- Corrected variables used for document branding.

**December 16, 2019**

- Edited procedures for exporting certificate key information prior to migration.
- Removed procedure for configuring new Photo ID device in Chapter 5. This information is in the *Niagara Enterprise Security Installation and Maintenance Guide*.

**August 7, 2019**

Edited procedures related to migrating Niagara Enterprise Security stations from NiagaraAX to N4.

**April 19, 2019**

Added two chapters related to station migration and legacy controller connections.

**November 13, 2017**

Removed a reference to tagged categories from the procedure, "Tips for Configuring oBIX Authentication".

**November 19, 2016**

Removed text in "Driver and Application Support" topic indicating N4 support for video drivers.

**May 6, 2016**

One change was made in the topic, "File Locations": in the table under the heading *Homes in a Supervisor*, corrected the path for the `protected_station_home`

**February 22, 2016**

- Added information about setting the configuration flag before migrating users. Changes were made to two topics:
  - "Features and compatibility between N4 and AX," and "Assess and prepare for N4 migration."
  - The following topic was added: "Configuring an AX station to migrate users"
- Edited the entire document to streamline the way software names are used and to convert task material to task steps.

**August 7, 2015**

Initial release document.

**Related documentation**

Additional information about Niagara platforms, installation and operation Workbench is available in the following documents.

- *Niagara Platform Guide*
- *Getting Started with Niagara*





# Chapter 1 Migration overview

## Topics covered in this chapter

- ◆ Why a migration tool?
- ◆ Platform compatibility
- ◆ Driver and application support
- ◆ Wire compatibility
- ◆ Platform and station file systems

The Niagara Framework® has evolved to the point where existing NiagaraAX platforms and stations, if upgradable, must be *migrated* to Niagara 4. Therefore, after installing Workbench, you cannot simply use stations saved in NiagaraAX.

Migration involves several concepts:

- Conversion of AX artifacts to the corresponding N4 format; for example, station .bog files, Px files. The N4 migration tool handles this conversion.
- “Wire compatibility” (communications) between AX and N4, with the possibility that some migrated jobs must retain some number of AX controllers. Some platform types cannot be migrated, for example, JACE-2 controllers.
- For platforms to be migrated that use custom AX software modules, the custom modules must be refactored as N4-compatible modules.

## Why a migration tool?

Niagara 4 has different platform and resource requirements than NiagaraAX, and there are other considerations that affect the suitability for a job to migrate from AX to Niagara 4. An understanding of these is essential before beginning migration work for any existing NiagaraAX job.

As a result of the fundamental changes and security improvements in Niagara 4, a migration process is required. Simple reuse of any saved AX station is not possible. Following, are a few of the major reasons:

- Directory structure changes

In NiagaraAX, all folders and files are installed and created/maintained under a single *Sys Home* directory. For example, for a Windows PC platform that directory is: C:\niagara\niagara-3.8.111. This directory includes runtime files and executables (modules, JRE, bin) along with configuration data files (stations, Workbench options and registry).

To improve security, these files and folders are relocated in Niagara 4. See [Platform and station file systems, page 16](#).

- Software modules were refactored

In NiagaraAX, each software module typically contains multiple content levels: “runtime”, “user interface” (ui), and sometimes “doc”. When installing modules in JACE controllers that are unable to utilize all levels, AX platform tools “filter” out unneeded content levels at install time. However, Niagara 4 uses the **Java Security Manager**, which does not support this model. So, software modules in Niagara 4 were refactored, essentially split into two or more separate modules JAR files that differ by runtime profile (-rt, -ux, -wb, -se, -doc). This also simplifies future module updates.

The N4 migration tool addresses refactoring when converting an AX station. However, if you have stations that use custom or third-party modules, those modules must be refactored the same way before starting a migration.

- Users, Categories, and permissions were overhauled

A number of changes to a station's **UserService** and child **User** components occurred in Niagara 4, which provide easier ways to manage large groups of station users. Coupled with new "Role" components and "Tagged Categories", permissions management is more logical and flexible. A related new **AuthenticationService** architecture allows the flexibility to specify the "authentication scheme" to use for station access at the *user level*. Among other things, this lets you integrate LDAP users into a station's standard **UserService**, (no special LDAP or Active Directory user service required).

- Fox Service has moved

The **FoxService** component in Niagara 4 was relocated to each station's main **Services** container, rather than existing as a frozen slot under the **NiagaraNetwork** component. Other related authentication changes were made as well.

- Ports in QNX platforms are sometimes redirected

As part of increased security in Niagara 4, the station process in all JACE controllers runs as an "unprivileged process", where such processes cannot bind to TCP/UDP ports less than 1024. This affected some services and network types operating as servers using standard ports in this range.

To accommodate this, a new "Server Port" component architecture is used, where client requests to the standard privileged ports are automatically redirected to other (higher) unprivileged ports. Most notably, the default HTTP and HTTPS ports of 80 and 443 for a station's **WebService** are now automatically redirected to ports 8080 and 8443. For related details, see "Server Port model" in the NiagaraAX Platform Guide.

There are many other differences and numerous new features in Niagara 4, however ones like the above are examples of "breaking changes" that require a database migration tool, and not just the simple addition of new Java classes and methods.

## Platform compatibility

The PC or host controller you wish to upgrade must meet hardware and software requirements.

To qualify as a candidate for migration, any of the supported platforms listed below should be running a released version of AX-3.8, with working communications to other platforms at the job site running the same software version. Earlier versions are not supported for migration.

Host Model	N4 supported / OS / notes	N4 compatibility notes
Supervisor or Engineering Workstation ("Workstation")	Supported OS is Professional or Enterprise versions of Windows 7, Windows 8.1, or Windows Server 2012 or Windows Server 2012 R2 (either 64-bit or 32-bit editions of any of these).	<i>Windows Vista (all) and Windows XP (all) are unsupported.</i> Linux OS support is unavailable. Prior editions of Windows Server, such as Windows Server 2008, are unsupported.
JACE-8000	Supported	Initially supports <i>only</i> N4.0. At some future point, an update release of AX-3.8 <i>may</i> be available that supports most features of this newest controller.
JACE-7 (JVLN)	Supported with Niagara 4.4 and earlier.	WiFi option is not supported. Some other option cards are also not supported in (see NPM below).
JACE-6E, JACE-603, JACE-645 (NPM6E)	Supported with Niagara 4.4 and earlier.	Unsupported options include: GPRS, Sedona wireless, and dialup modem. Minimum resources are required (fully loaded units in AX may not run in N4.0). For details, refer to <a href="#">Platform resource requirements, page 11</a> .
JACE-6, JACE-602 Express (NPM6)		
JACE-3E (NPM3E)		
JACE-2, JACE-202 Express (NPM2)	Not supported	Support is available for data exchange with N4 platforms. For example, these stations can be under the

Host Model	N4 supported / OS / notes	N4 compatibility notes
JACE-403		NiagaraNetwork of N4 Supervisor. For related details, see .
JACE-545		
JACE-NXT		
JACE-NXS		
SoftJACE	Supported	Support is available for data exchange.

If you first upgrade a system to AX-3.8 in preparation for migration to N4, be sure to verify proper operation of the system (including NiagaraNetwork communications between stations), before making station backups to use in the migration process.

### Niagara 4 platform compatibility

For any supported PC or host to be migrated, be sure it has the necessary resources available. See [Platform resource requirements, page 11](#).

## Platform resource requirements

N4 requires more disk space, more Java heap, and more system RAM to run than a similar AX station. Therefore, AX-3.8 JACE running near capacity will probably not fit the same station when converted to N4. A brief summary of reasons why are as follows.

- **Disk space (Flash)**  
N4 requires between 14-16 MB more space than an equivalent AX installation. Additional space is required by the new Java 8 VM (vs. Java 5), and new UX features enabling a rich browser experience.
- **Heap space**  
For an equivalent station, N4 requires more Java heap (a baseline of 10MB) due to new features and functionality, and more system memory when running on JACE controller.
- **History RAM disk size (NPM6/NPM6E only)**  
To free additional system memory, the maximum history RAM disk size on JACE-6 has been reduced from 64MB to 32MB. This should not affect most units because the default RAM disk size is 32MB. If the RAM disk on JACE-6 has been increased, then this increase in the RAM disk size comes at the expense of Java heap. Maximum history count has not changed.

## Recommended minimum resources by controller type

Each platform you migrate requires a minimum of resources in preparation to run the new system.

The following table summarizes recommended resource requirements before converting to N4.

JACE type/model	Minimum Free Disk Space, in MB	Java Max Heap, in MB	Minimum Free Heap, in MB (if maxHeap feature licensed (1) )
NPM3 (JACE-3E)	22	94	38
NPM6 (JACE-6)	20	94	38
NMP6E ( JACE-603, JACE-645)	24	94	38
JACE-7	22	94	90

(1) If an JACE is NOT currently licensed with the "maxHeap" feature, then heap usage will not be an issue in N4.

The Minimum Free Disk Space recommendation is based on the following:

- 4MB free reserve for future N4 expansion
- 4MB for Data Recovery (NPM3E and NPM6E)
- 14MB for N4 increase
- 2MB for JACE-6 boot partition increase

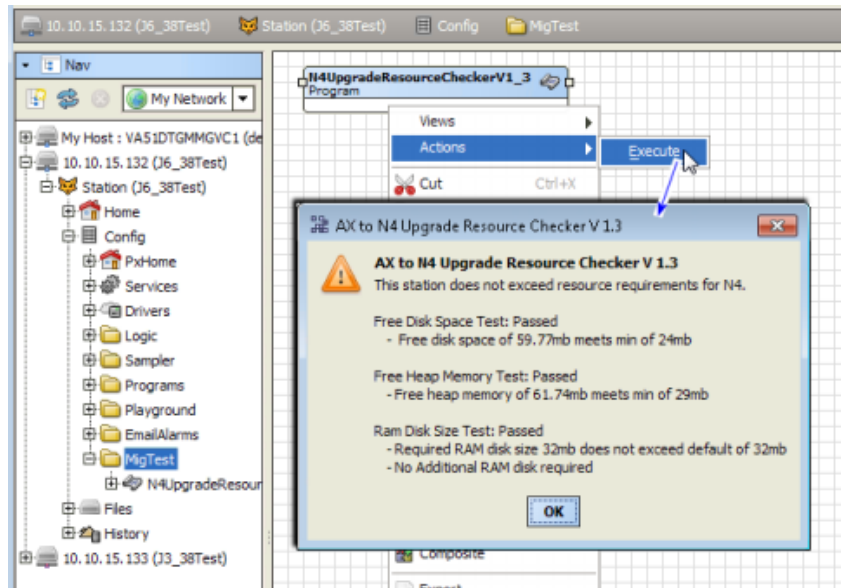
The Minimum Free Heap recommendation is based on the following:

(20% total 86 NB heap size = 17MB) + (13MB additional N4 overhead + 8 MB smaller heap (J3/J6 only) = 38 MB

## Checking for minimum resource requirements

There is a special BOG file with the AX-compatible Program component that you can use to determine if a platform meets the minimum resource requirements for migration. Test results are provided for free disk space, free heap memory, and ram disk size.

Figure 1 Example resources check notification using the Program in AX-3.8 JACE station



Alternatively, you can manually check resources, and compare to the recommended resource minimums given in [Table 2 on page 7](#).

## Using the resource checker Program

This program provides a binary result: Failed or Passed. Only hosts that pass can be migrated.

**Prerequisites:** You have the BOG file with the resource checker program, Workbench, and can open a station connection (Fox or Foxs) to the host controller.

- Step 1** Copy the BOG file with the resource checker program component to your AX-3.8 system home folder.
- Step 2** Using Workbench, open the station (Fox or Foxs), and expand **Config** to find a folder to copy the Program into, or else add a new folder. You can locate it anywhere under **Config**.
- Step 3** In the Nav tree, locate the BOG file with the resource checker program (it may be named "N4UpgradeResourceCheckerV1\_n") and copy it into the station. You should be able to immediately use the program.

Step 4 Right-click the program in the station, and select **Actions**→→ **Execute**.

After a few seconds, a popup **AX to N4 Upgrade Resource Checker** window opens with the test results, as either "Passed" or "Failed".

Step 5 Click **OK** to close the window.

### **Manually checking for free disk space**

A minimum amount of free disk space is required.

**Prerequisites:** The host platform is at AX-3.8 and running the station to be migrated.

Step 1 Using Workbench, open the station (Fox/Foxs)..

Step 2 Expand **Config**→**Services** and double-click **PlatformServices**.

The **Platform Service Container Plugin** view opens.

Step 3 In the **Filesystem** entry for **/ffs0**, compare the **Free** value with the value in [Recommended minimum resources by controller type, page 11](#).

The JACE value should be equal or greater than this minimum value.

### **Manually checking heap usage**

A minimum amount of Java heap is required.

**Prerequisites:** The host platform is at AX-3.8 and running the station to be migrated.

Step 1 Using Workbench, open the station (Fox/Foxs), and access the **Spy** page (in Nav tree, right-click **Station** node and select **Spy**).

Step 2 Click **util**→ **gc**

Step 3 Refresh the page several times, observing the **usedMemory** value under the **After GC** heading.

[Remote Station | util | gc](#)

```
Force Garbage Collection
Before GC
totalMemory 24320kb
freeMemory 2500kb
usedMemory 21820kb
After GC
totalMemory 24320kb
freeMemory 3139kb
usedMemory 21181kb
Freed
freed 639kb
```

This represents the low point of Java heap usage.

## **Driver and application support**

The initial release of Niagara 4 supports most of the commonly used NiagaraAX drivers, including BACnet, LonWorks, Modbus, SNMP, and some legacy serial-based drivers. Support was dropped for a few drivers.

The following table lists a few drivers and applications that are no longer supported.

Unsupported driver / application	Removed modules / notes
802.1x wired authentication support for QNX-based JACE controllers	Module "platIEEE8021X"
OpenADR client drivers (simple, smart)	Modules "adr" and "dras"

Unsupported driver / application	Removed modules / notes
Alarms to relational database support	Module "alarmRdb". Superseded by module "alarmOrion". Note if a third-party application accesses alarms, it will be affected by this (change in the exported schema).
Original crypto/security module, using "CryptoService" in station	Module "crypto"—replaced by "platCrypto" since AX-3.7 (should only be used by non-Hotspot JACEs, for example, JACE-2).
Dust wireless mesh network	Module "dust"
Energy Application System (EAS), also known by the branded name VES	Module "eas"
Support for FIPS 140-2 (Federal Information Processing Standard)	Special FIPS distribution (.dist) file
Floating license repository	Module "flr"
Fox tunneling, HTTP tunneling, and platform tunneling	Improved security in N4 prohibits most tunneling. Only serial tunneling is supported in Niagara 4, via the "tunnel" module on the station (server) side and a separate client-side tunnel application.
IBM DB2 relational database support	Module "rdbDb2"
Lon tunneling	Module "lontunnel". Improved security in N4 prohibits this tunneling.
Sedona (SedonaNetwork, SedonaJen6lpNetwork)	Module "sedonaInstaller" in AX builds, which, from a downloaded Sedona "bundle," would install Sedona-specific modules for integration. These are not supported.
Older video drivers based on the "dev-Driver", superseded in AX by "nDriver" based videoDriver framework	Modules "video" (base), "axis", "dedicatedMicros", "milestone", and "rapideye", superseded in AX by modules "nvideo", "naxisVideo", "ndedicatedMicros", "nmilestone", and "nrapideye".
Platform support for Niagara R2 on any QNX-based JACE controller	Niagara R2 platform support on JACE-603/JACE-645 controllers requires Workbench (3.6, 3.7, or 3.8).

**NOTE:** This is a partial list. Other rarely-used or limited-distribution software modules were not brought forward to the new version. For more information, check with your support channel to verify availability.

Additionally, any OEM-specific or custom (non-Tridium) software modules used on any platform to be migrated must be refactored for use in Niagara 4. This is a separate process from using the migration tool on a saved AX station, and must be completed by the custom module developer before you migrate the station.

## Wire compatibility

Supported communications, or "wire compatibility" between platforms and tools can be a factor in different job scenarios. Version compatibility is also relevant when it comes to feature support between N4 and AX. The following sections describe compatibility between the two major versions of Niagara with regard to communications and features.

### Supported connections

Workbench can connect to stations running NiagaraAX as well as stations running Niagara 4. The following table summarizes the possible connections and indicates which are supported in Niagara 4.

Table 1 Communications support between Niagara 4 and NiagaraAX

From	To	Supported	Notes
AX Workbench	N4 station, N4 Supervisor	No	Prohibited in software.
AX Workbench	N4 platform	No	Prohibited in software.
N4 Workbench	AX platform	Yes	Provides support necessary for AX to N4 upgrades. A few functions from the Workbench remote controller <b>Platform Administration</b> view are unavailable, including the <b>Commissioning Wizard</b> function.
AX Workbench	AX station	Yes	Supported in software. AX Workbench is required to configure AX station.
AX station	N4 station, N4 Supervisor	Yes	Discovery of points, schedules, and histories in N4 stations is unavailable. However, you can manually add points. Refer to the following section ( <i>Features and compatibility</i> ) for more details.
N4 station, N4 Supervisor	AX station	Yes	Refer to the following section ( <i>Features and compatibility</i> ) for more details.
N4 station	AX Supervisor	No	Not prohibited in software, but unsupported.

## Features and compatibility

A limited number of features are supported when communicating between Niagara 4 and AX-3.8.

This table indicates which features are supported when communicating between stations.

Table 2 Feature compatibility table

Feature	From N4 to AX	From AX to N4	Additional comments
Point discovery	No (AX Supervisor)	Yes (N4 Supervisor)	AX stations cannot discover points in N4 stations. The alternative is to manually add and configure the points.
Point data	Yes	Yes	N4 supports virtual points in AX stations. AX supports virtual points in N4 stations.
Export Histories	No	Yes	N4 uses different history encoding, and so detects and converts history records as they come in.
Import Histories	No	Yes	
Alarms routed to and acknowledged	No	Yes	
Export Schedules	Yes	No	
Import Schedules	Yes	No	
Synchronize users out (sync out)	Yes, but only users AX is capable of supporting	No	Supported users are those assigned an authentication scheme with a password that can be ported to the AX station. The synchronization process is supported in only one direction.
Synchronize users in (sync in)	No	Yes, but only users AX is capable of supporting	LDAP is a good alternative for network user synchronization.  Although AX stations do not support the HTML5 user prototype, you can synchronize users configured with the HTML5 user prototype to AX stations by enabling the <code>User Defined 1</code> configuration flag on the <code>web_WebProfileConfig</code> property of the user prototype slot in the AX station.
Virtual points	Yes	Yes	

Feature	From N4 to AX	From AX to N4	Additional comments
Tunneling	n/a	n/a	As Fox, HTTP, and platform communications provide insufficient security, they are not supported in N4. Serial tunneling is supported.
Export tags	No, stations cannot join as subordinates	Yes, stations can join as subordinates	For the AX station (subordinate) to join an N4 station (Supervisor), prior to executing the export tag join, the two-way Fox connection in each station's NiagaraNetwork must be established between the stations. Failure to pre-configure the two-way connection results in an error during the export tag join.  Using Px files with ExportTags may be problematic as all Px files must be converted for use with N4.
File transfer using Fox ( <code>NiagaraDeviceFileExt</code> ) is supported.	Yes	Yes	File permission checks are enforced.
Provisioning	Yes	No	Supported operations for AX subordinates include: <ul style="list-style-type: none"> <li>• Update licenses</li> <li>• Backup stations</li> <li>• Copy Supervisor file</li> <li>• Install valid AX software</li> <li>• Upgrade out-of-date AX software</li> <li>• Restore prior station backup, for example, from the step history view of a backup job.</li> </ul> N4 provisioning robots will not run on AX stations.

**NOTE:** For Niagara 4 Supervisor to provision AX stations in addition to its own stations, you must import the software database from the prior Supervisor into the new Supervisor's software database. However, Niagara 4 Supervisor cannot directly upgrade platforms to Niagara 4.

## Platform and station file systems

During installation and platform commissioning, the software differentiates between two types of files and stores them in separate locations (homes) based upon the content of the files: configuration and runtime data.

Configuration data, which can be changed by users, include stations, templates, registry, logs, and other data. Runtime data include core software modules, the JRE, and binary executables. Maintaining separate file locations enhances security by denying general access to runtime files (runtime folders are read-only) and allowing each user access to only their personal configuration files.

Multiple home directories serve to separate configuration and runtime data. Each platform has a User Home for configuration data and a System Home (Sys Home) for runtime data. Several other folders under these homes serve specific functions.

The platform's System Home (Sys Home) is sometimes identified by its alias, `niagara_home`. It has a `security` subfolder that contains license files and license certificates. Except when it is time to upgrade, the System Home's runtime files are read-only.

The platform's User Homes contain all configurable data. Referred to by the alias `niagara_user_home`, the separation of these files from the runtime files stored in the System Home folder is new in Niagara 4. The impact of this change is mostly felt when manipulating stations. When Workbench creates a new station, it puts the station in the platform's User Home directory. To start Niagara, the station must be copied from the station User Home to the platform's daemon User Home.

Due to application differences, there are some minor differences between the complete list of files in a user's User Home and the daemon's User Home. For instance, `daemon.properties` only exists in the daemon's User Home and `navTree.xml` only exists in the logged in user's User Home.



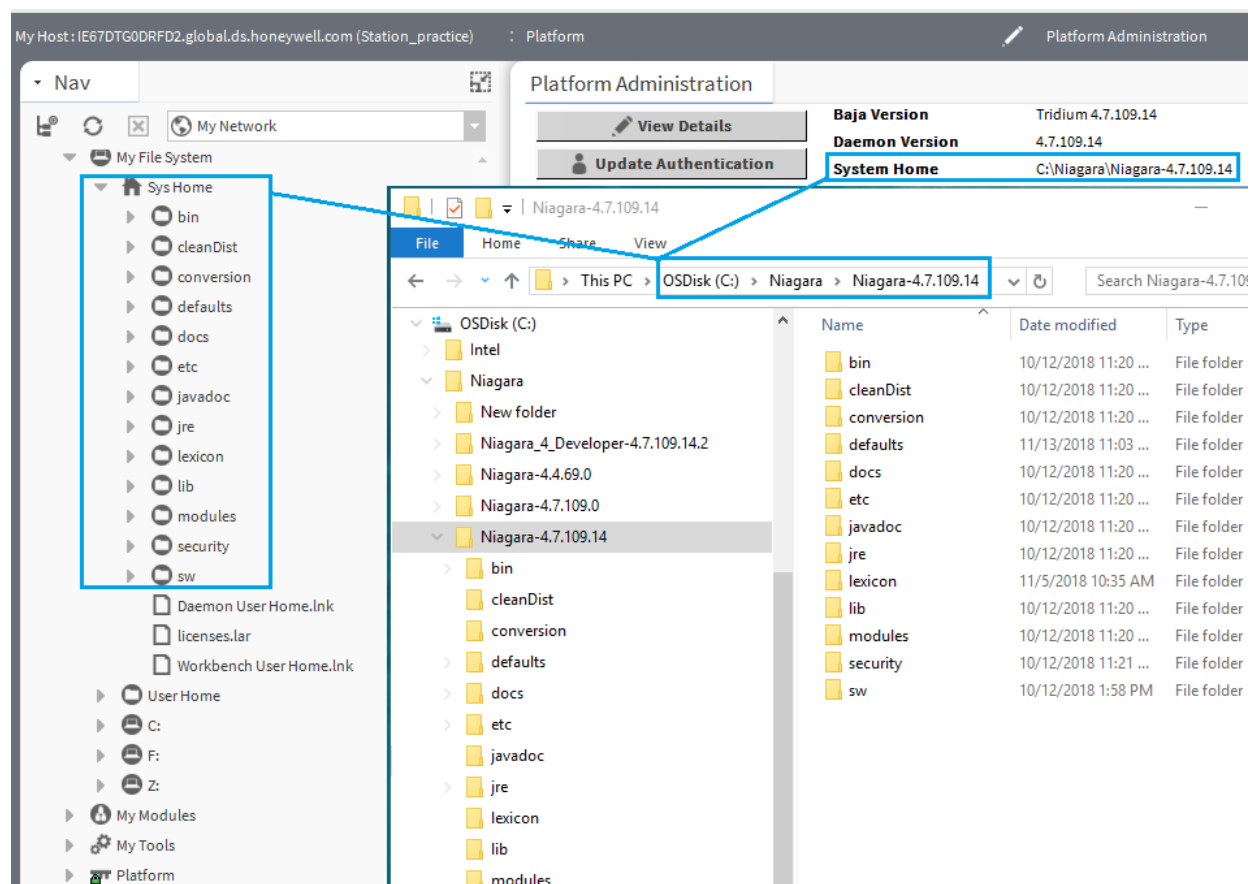
## Supervisor homes

The homes on a Supervisor or engineering workstation support supervisory functions.

Supervisor homes include:

- A Sys Home, which contains runtime files, such as core software modules, the JRE, and binary executables.
- A User Home for each user. These are known as Workbench User Homes. They contain station configuration data, including option files, and registries.
- A platform daemon User Home, which contains the Supervisor station and platform configuration data.
- Two station homes: a Protected Station Home and a Station Home. These are located on the computer's drive C.

Figure 2 Example Sys Home (niagara\_home) on a Supervisor platform



The example above shows the file system for Niagara 4 Supervisor running on a Windows PC. In the example, the actual location of the System Home folder on this PC is:

C:\niagara\niagara-4.7.109.14.

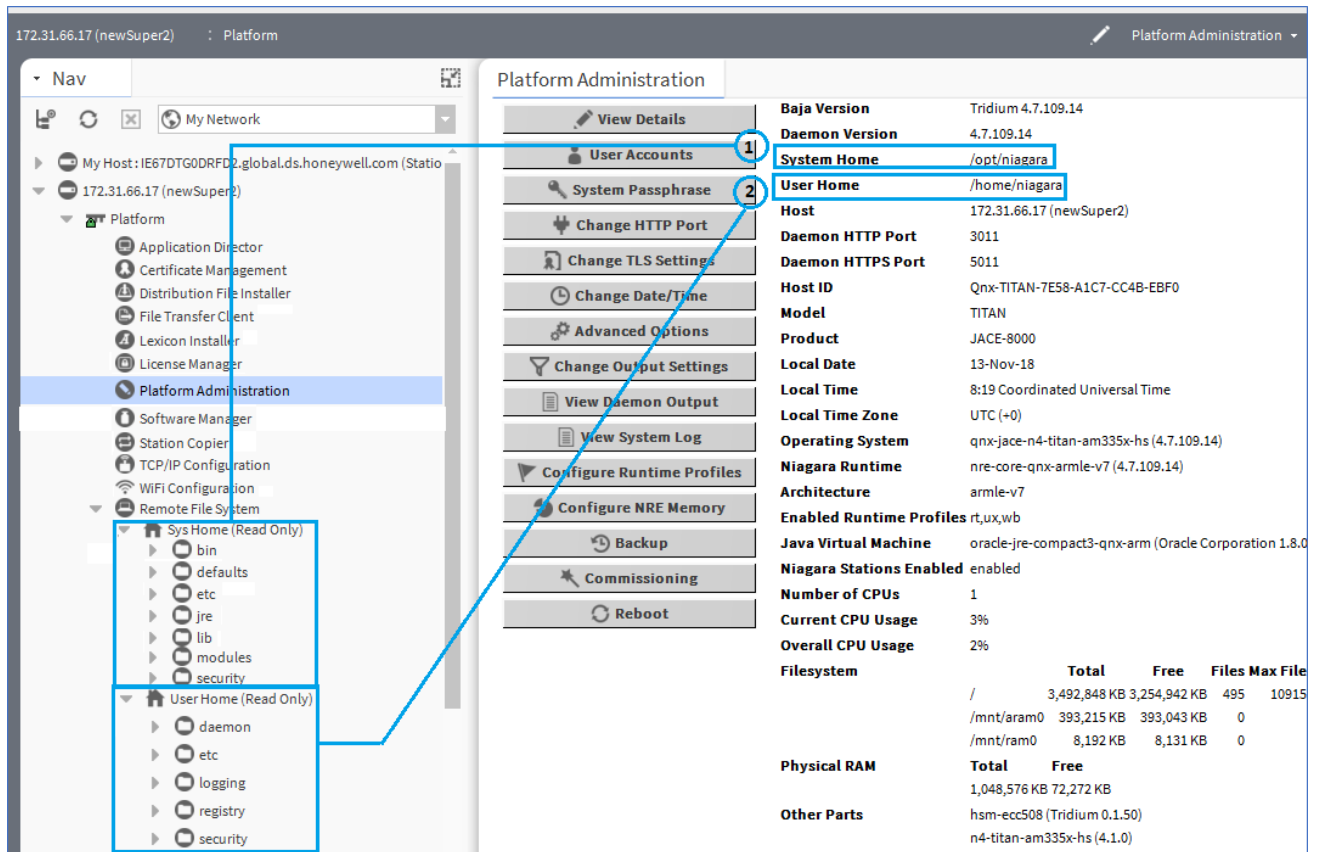
The following table provides a summary of the Supervisor or engineering workstation homes with shortcut information.

Home in the Workbench Nav tree	Home in the Platform Administration view	Niagara 4 alias	Windows folder location and contents	File ORD shortcut
<b>My Host→My File System→Sys Home</b>	<b>System Home</b>	niagara_home	C:\niagara\niagara-4.x.xx where 4.x.xx is the software version that contains executable and software files.	! (as in Niagara4.x)
<b>My Host→My File System→User Home</b>	N/A	niagara_user_home	C:\Users\username\N4-4.x.xx\tridium where: username is your name to identify you as the user of your computer. 4.x.xx is a software version. The Workbench User Home for each human user contains that user's unique configuration files.	~ (unique to Niagara 4)
shared folder	N/A	station_home	C:\Users\username\N4-4.x\tridium\shared where: username is your name to identify you as the user of your computer. 4.x.xx is a software version.	^ (as in Niagara4.x)
stations folder	N/A	protected_station_home	C:\ProgramData\N4-4.x\tridium\stations\<stationName>	^^ (unique to Niagara 4)
N/A	<b>User Home</b>	niagara_user_home	C:\ProgramData\Niagara4.x\<brand> Platform daemon user home (non-human user) holds platform daemon configuration files. Requires a local platform connection to view in the <b>Platform Administration</b> view.	~ (unique to Niagara 4)

## Controller homes

A controller has one System Home and one User Home. The System Home on a controller appears as **System Home** in the **Platform Administration** view.

Figure 3 Controller System Home (niagara\_home) and User Home (niagara\_user\_home) locations



1. Identifies a controller's System Home (alias: niagara\_home) in both the Nav tree and the **Platform Administration** view. In the Nav tree, you find the controller's System Home by expanding **Platform**→**Remote File System**. The actual location of the System Home folder for a controller is: `/opt/niagara`.
2. Identifies the controller's User Home or daemon User Home (alias: niagara\_user\_home) that contains the installed and running station and other configuration files. The actual folder for the daemon User Home is: `/home/niagara`.

Home in the Platform Administration view	Home in the Platform Administration view	Niagara 4 alias	OFD location and contents	File ORD shortcut
Platform→Remote File System→Sys Home (Read Only)	System Home	niagara_home	<code>/opt/niagara</code> Contains operating system data.	! (as in Niagara4.x)
Platform→Remote File System→User Home (Read Only)	User Home	niagara_user_home	<code>/home/niagara</code> Contains configuration data and the installed and running station.	~ (unique to Niagara 4)

### Windows user homes

For security reasons, each person that is a user of a Windows platform, has their own user home. This means that each Supervisor platform has at least two user home locations: Workbench User Home (for people), and a platform daemon User Home (for the daemon server processes).

The Supervisor engineering workstation that is licensed to run a station has a daemon User Home. The daemon is a server process and represents a (non-human) user that manages the Supervisor's running station.

The Supervisor’s daemon User Home contains daemon-specific configuration information. The actual location of the Supervisor’s daemon user home is `C:\ProgramData\Niagara4.x\<brand>`. The platform daemon is installed to this location and started from this location as a Windows service.

In Niagara, the installation wizard provides the default daemon User Home location, which you can change if you wish. In the step to select the daemon User Home location you have the option to either accept the default location or specify an a different location.

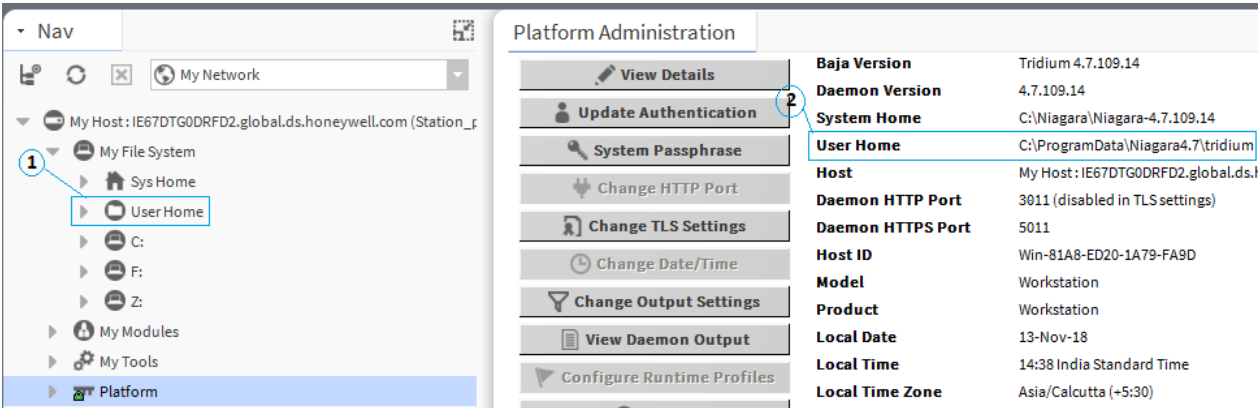
**CAUTION:** The daemon and Workbench User Homes are intended to be installed in distinctly separate locations. This separation of homes is for security reasons but it also prevents certain unintended results. For example, when the two homes are installed in the same location the **Station Copier** becomes unavailable, and you will not be able to make a portable copy of the station.

In addition to this daemon User Home, a Windows host has a separate Workbench User Home for each person (operator, administrator) who logs in with credentials to a Windows-based platform licensed for Workbench, meaning a Supervisor or engineering workstation. Any given PC or workstation has at least one, and may contain multiple Workbench User Homes.

Each person’s Workbench User Home is available in the Nav tree as a node under **My Host→My File System** and contains unique configuration information that is not shared. This is where to find any new Workbench station, as well as any remote station backups, templates and other configuration files. The actual location of each person’s User Home is in the `Niagara4.x` folder under your Windows `User` account.

To see both types of User Homes on the same view, open a local platform connection to your Supervisor PC, expand **My File System** in the Nav tree, and double-click on the **Platform Administration** view.

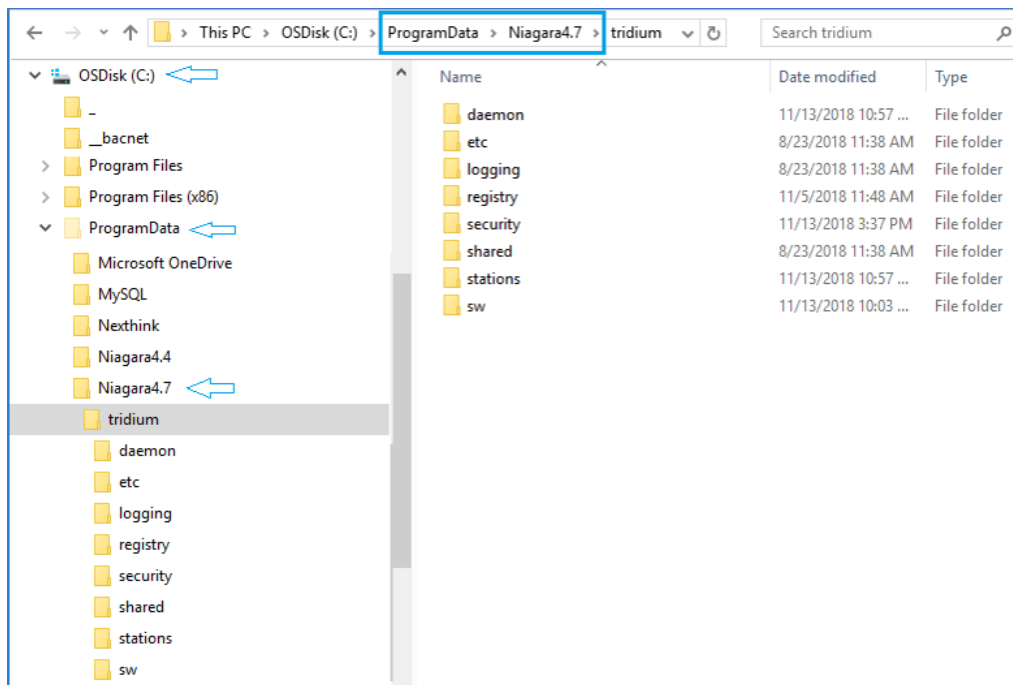
Figure 4 Local platform connection to a Supervisor station with Workbench and daemon User Homes



1. Identifies the Workbench User Home.
2. Identifies the daemon User Home.

When you first install Niagara 4 on your PC and start the daemon (by choosing the install option `Install` and `Start Platform Daemon` on installation), the installation program creates this daemon User Home (`Niagara4.0` folder). Initially, it contains an empty `stations` sub-folder, until you copy a station to it.

Figure 5 Example of a daemon User Home location in Windows Explorer



You can do this station copy in different ways. In Niagara 4, you can let the **New Station** wizard initiate this copy from its last Finish step. Or, as needed, you can manually open a local platform connection and use the **Station Copier**.

The actual location of each user's home folder is under that user's personal Windows account. Some example Workbench user home locations are:

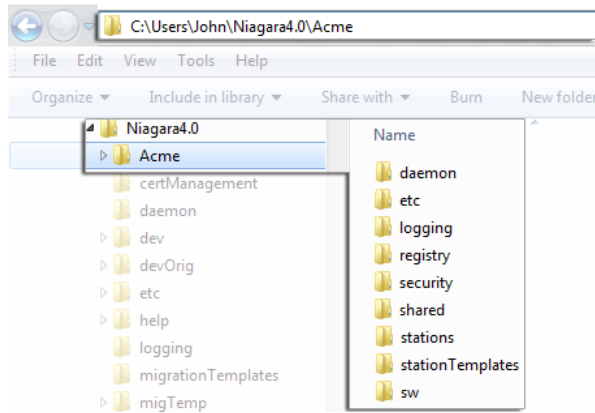
```
C:\Users\John\Niagara4.x\<brand>
```

```
C:\Users\Mike\Niagara4.x\<brand>
```

where "John" and "Mike" are separate Windows user accounts. The first time a Windows user starts Workbench, the system automatically creates that user's unique User Home folder.

The person that installs Niagara 4 on a PC acquires the first such User Home. If no other Windows users log on to that PC, this may be the only Workbench User Home on the platform. However, if another person logs on to Windows on that computer and starts Workbench, that user also acquires their own Workbench User Home.

The following figure shows an example Workbench user home location in Windows Explorer.

**Figure 6** Example of an automatically-created Workbench User Home in Windows Explorer

### Station homes

Niagara 4 uses the Java **Security Manager** to protect against malicious actors who may attempt to access station or platform data and APIs. The **Security Manager** uses signed policy files that specify the permissions to be granted for access to code from various sources. Included are tighter controls about which applications have access to parts of the file system. Two folders under the Workbench User Home serve to protect sensitive data while allowing authorized access to data that can be shared.

- The `stations` sub-folder, otherwise known as the Protected Station Home (alias: `protected_station_home`) contains the running station's file system, and may be accessed only by core Niagara software modules. Station items that are always in Protected Station Home, that is, items that are not under the `shared` sub-folder include the following folders, as applicable:
  - `alarm`
  - `history`
  - `niagaraDriver_nVirtual`
  - `provisioningNiagara`
  - `dataRecovery`

All files in the `stations` folder root (`config.bog`, `config.backup.timestamp.bog`, etc.) are always in the Protected Station Home. For this reason, in Niagara 4 it is no longer necessary to blacklist or whitelist station files or folders.

- The `shared` sub-folder, otherwise known as the Station Home (alias: `station_home`), allows all modules to have read, write, and delete permissions.

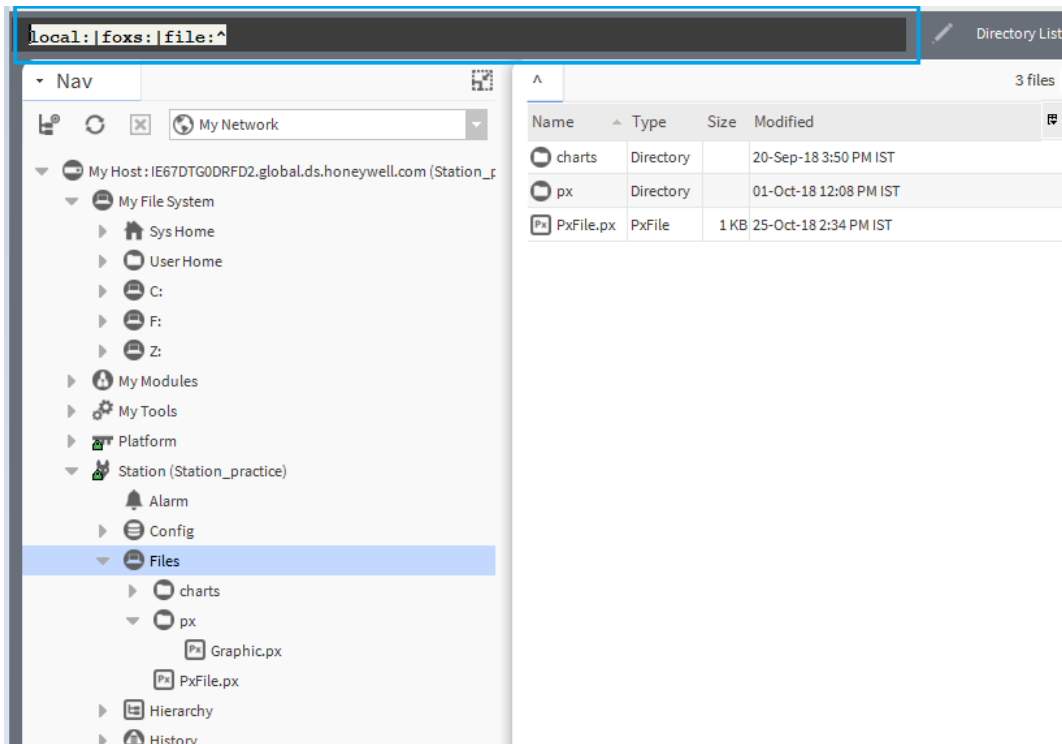
The alias `station_home` retains the same file ORD shortcut (^) as used in NiagaraAX—only in Niagara 4 it points to the station's `shared` sub-folder.

Figure 7 Example NiagaraAX station file folders compared to Niagara 4 station file folders

AX station folder	N4 station folder
<ul style="list-style-type: none"> <li>stations <ul style="list-style-type: none"> <li>demo <ul style="list-style-type: none"> <li>alarm</li> <li>dev</li> </ul> </li> <li>frames</li> <li>history</li> <li>html</li> <li>httpd</li> <li>images</li> <li>nav</li> <li>niagaraDriver_nVirtual</li> <li>public</li> <li>px</li> <li>secure</li> <li>tree</li> <li>demoToN4</li> </ul> </li> </ul>	<ul style="list-style-type: none"> <li>stations <ul style="list-style-type: none"> <li>demo <ul style="list-style-type: none"> <li>demoToN4 <ul style="list-style-type: none"> <li>alarm</li> </ul> </li> <li>history</li> <li>niagaraDriver_nVirtual</li> <li>shared <ul style="list-style-type: none"> <li>dev</li> <li>frames</li> <li>html</li> <li>httpd</li> <li>images</li> <li>nav</li> <li>public</li> <li>px</li> <li>secure</li> <li>tree</li> </ul> </li> </ul> </li> </ul> </li> </ul>

As shown in the figures above, comparing an AX station file folder structure (left side) to the same station migrated to Niagara 4, a number of folders are under this `shared` sub-folder. Included are folders and files used in graphical (Px) views or navigation, such as `images`, `px`, `nav` and so on. Modules that are prevented from writing to the station root by the **Security Manager** must write to the `shared` sub-folder.

Figure 8 File ORD for the Station Home in Niagara 4 now points to the shared folder



As shown in a station running above, the Station Home (alias: `station_home`) file ORD (^) now points to the contents of the `shared` sub-folder. Other items in protected Station Home are no longer accessible or visible.

## ***Copying a new station to the daemon user home***

In Niagara 4, the **New Station Wizard** finishes with an option to copy the station from the station home (the location for each new station) under your Workbench **User Home** to the **User Home** of the local platform daemon.

**Prerequisites:** The new station exists in the station home (under User Home).

**Step 1** When the **New Station Wizard** prompts you with the option to `Copy station`, select the option and click **Finish**.

**Step 2** Make a local platform connection and log on.

The **Station Copier** transfers the station and prompts you with the options to start the station after copying and enabling auto-start.

**Step 3** Select the option to start the station.

The **Application Director** opens with the new station present in the daemon **User Home**.

The new station now exists in two locations on your local host: the original location in your Workbench **User Home**, and also in the platform daemon **User Home**.

Once the station is running in the daemon **User Home**, you can make a backup of the running station, where the backup `.dist` file goes in the `backups` folder of your Workbench **User Home**. Or, you can use the platform **Station Copier** to copy the station back to the `stations` folder of your Workbench **User Home**.

**NOTE:** Using the **Station Copier** to copy the station back to your Workbench **User Home** is highly recommended if you made any changes to the station. This is essential if you are installing it (copying it) to any remote platform. Remember, the copy of the station in your Workbench **User Home** is immediately obsolete as soon as you make changes to the copy of the station running in the daemon **User Home**.

## ***Running a station from the Workbench User Home***

Instead of running a station out of the daemon **User Home**, you can run a station directly from your Workbench **User Home** (outside of normal platform daemon control).

You do this using the Niagara 4 console command:

```
station stationName
```

This is not a recommended way to run a production station, but instead more of a developer utility that allows quick access to station debug messages in the console window. If you run the station this way, be mindful of possible port conflicts with any other station that the daemon user may be running locally (in daemon **User Home**), meaning Fox ports, Web ports, and so on.

## ***Shared file strategy***

A sharing strategy makes it possible for multiple users of a single Supervisor or engineering workstation to share station files including backups. This type of sharing is different from the `shared` station sub-folder. This is a folder you create for the purpose of sharing backups and distribution files.

If multiple people log in (differently) to Windows on a Niagara 4 host and use Workbench, each person has their own separate Workbench **User Home**.

Windows users require permissions to access other users' files; yet it's possible that different users of a system (Supervisor or engineering workstation) may need to share items, such as station backups, station copies, saved template files, and so on. Such items may be in multiple Workbench **User Home** locations in Niagara 4.

Therefore, in some scenarios you may need to establish a sharing strategy, perhaps re-copying such items to a commonly-accessible folder location on the Niagara 4 Windows PC. For example, you might create a shared folder under the Niagara 4 System Home location (the Workbench **User Home** is not shareable).



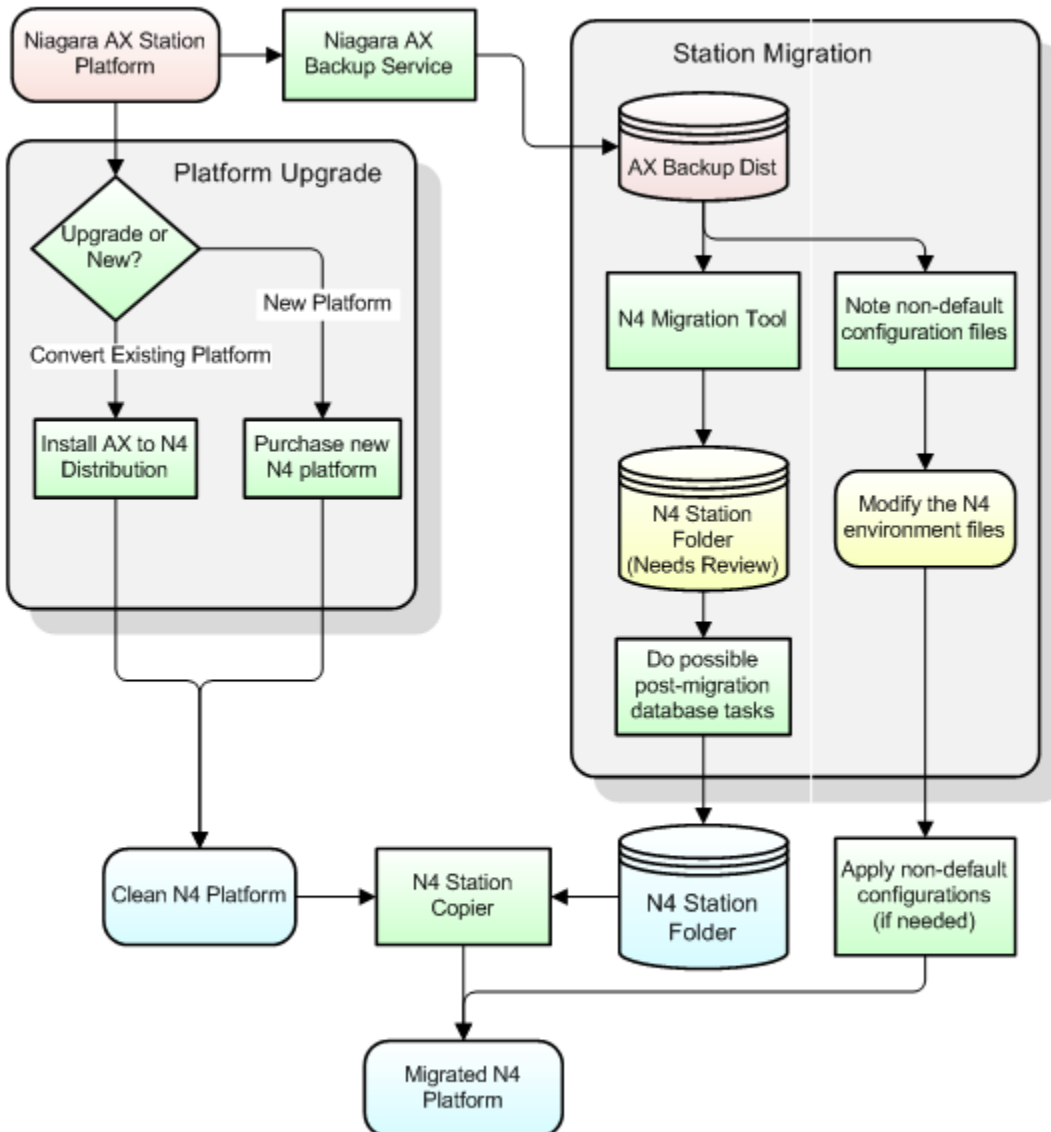
## Migration workflow process

Based on an existing NiagaraAX job with a Supervisor and some number of JACE controllers, the workflow process for migration to Niagara 4 may look similar to below:

### Migration workflow diagram

Basic steps in migrating your NiagaraAX installation are included in the following diagram.

Figure 9 Migration steps diagram



Red items indicate NiagaraAX artifacts. Blue items indicate Niagara 4 artifacts. Green boxes indicate steps you need to take in the migration process.

Environment files are shown in yellow, because they may be generic to all versions of Niagara. If so, and changed from defaults, they may require individual attention to see if values in them should be re-applied. Examples of such files include modified `!lib/units.xml` or `!lib/colorCoding.properties`.

More detailed migration steps are included in the section [Migration workflow process, page 25](#).

## Assess and prepare for migration

This topic summarizes platform and station-related tasks to complete before migrating.

1. Identify those platforms to be migrated. JACE controllers must be running at least NiagaraAX 3.8.nn, and be compatible with N4.0. See [Platform compatibility, page 10](#) and [Platform resource requirements, page 11](#) for details.
2. Review the current drivers and applications running on the JACE controllers to be converted. See [Driver and application support, page 13](#) for details.

If any drivers or applications are unsupported in N4.0, but are critical to retain, you can opt to leave those controllers running AX-3.8, and still integrate them with Niagara 4 Supervisor station. However, you cannot integrate a Supervisor at AX-3.8 with Niagara 4 JACE controllers.

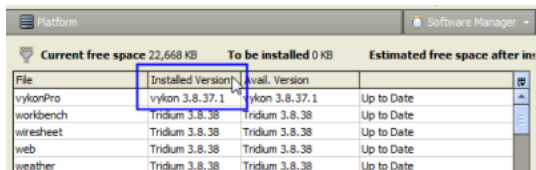
**NOTE:** For any job that will have a *mix* of Niagara 4 and AX-3.8 platforms, refer to the section [Wire compatibility, page 14](#).

3. For each AX-3.8 platform to be migrated, identify custom or third-party software modules that it uses. Prior to upgrading, arrange to have those modules refactored as Niagara 4 modules. Contact the custom module vendor to arrange this.

### NOTE:

You cannot migrate a station to N4 until all of the modules it uses have been refactored for Niagara 4.

If you are unsure if an controller has such modules, you can check by making a platform connection to it, then going to the **Software Manager** view.



File	Installed Version	Avail. Version	
vykonPro	vykon 3.8.37.1	vykon 3.8.37.1	Up to Date
workbench	Tridium 3.8.38	Tridium 3.8.38	Up to Date
wiresheet	Tridium 3.8.38	Tridium 3.8.38	Up to Date
web	Tridium 3.8.38	Tridium 3.8.38	Up to Date
weather	Tridium 3.8.38	Tridium 3.8.38	Up to Date

- a. Click the "Installed Version" column header to re-sort, as shown above. Scroll down as necessary. Any third-party sourced modules must be refactored by the module vendor before the station can be migrated to Niagara 4. This assumes that all modules installed in the JACE are required by the controller's currently running station. Any installed module that is *not used* by the station is inconsequential in for migration.
  - b. If you previously built custom modules of Program components, using the ProgramModule feature and its "Program Module Builder" view, you must also refactor these modules. This is something you can do during the migration process.
4. If you will synchronize users from the N4 Supervisor to the AX station that have been assigned an HTML5 prototype, enable the `User Defined 1` configuration flag on the `web_WebProfileConfig` property of each user prototype slot in the AX station. (This is necessary because the most likely type of user prototype to be selected is an HTML5 prototype. There is no equivalent prototype in an AX station. Consequently, by default, the migration tool assigns the first prototype in the list to each migrated user. This prototype happens to be the Velocity Doc Web Profile.)
  5. Make an N4.0 license request for all platforms to be migrated. You need confirmation that these licenses are ready before migrating the platforms (AX licenses do not work in Niagara 4).

In almost all cases, the calculated host ID remains the same. An exception is if, on a Windows platform, you are moving from a 32-bit install to a 64-bit install (or vice versa), in this case, the host ID differs.

Be sure to archive the old AX-3.8 license files as well.

### ***Station backup and database migration***

Before migrating, you should back up each station and prepare databases for the new system.

Using Workbench, make a station *backup* of each JACE controller to be migrated, and do the same for the job's Supervisor station. Be sure to include history and alarm files.

Then run the migration tool against these stations, with output as N4.0 station copies.

Sometimes, post-migration database "cleanup" may be needed. You should always do a preliminary check-out of each migrated station.

### ***Supervisor upgrade***

You migrate the Supervisor first.

Once migrated, it can start up and communicate with JACE controllers still running AX-3.8 (see [Wire compatibility, page 14](#) for related details).

### ***Controller conversion and new station installation***

After migrating the controller and Supervisor stations you can convert the controllers and install the new stations.

Before converting JACE controller from AX, you must successfully migrate its station to N4, including an off-line checkout of it using Workbench. Only then should a conversion to N4 be done.

### ***System cleanup***

Following the upgrade of all AX-3.8 platforms to N4.0, including installation of migrated stations, there may be several areas that need attention.

### ***AX to N4 migration tool and code signing***

When running the AX to N4 Migration Tool in 4.3 or later, any program object encountered is signed if a code-signing certificate has been configured in Workbench.

When the migrator encounters the first program object that needs signing, it prompts you for your code-signing certificate password.



# Chapter 2 Migration tasks

## Topics covered in this chapter

- ◆ Preparing platforms for migration
- ◆ Run the migration tool
- ◆ Migration details
- ◆ Post-migration database tasks
- ◆ Upgrade/convert platforms and install stations

This chapter provides migration tasks, along with reference details as needed.

## Preparing platforms for migration

The following sections describe tasks necessary before migrating stations and upgrading platforms.

### Certificate export

If your controllers are configured to use secure communications with signed certificates, the best practice is to create new certificates for each controller and install them after migration. However, it is also a good idea to export the current certificates before migration in case you need them later.

To save your existing keys, export them from the User Key Store and the User Trust Store prior to migration. These are deleted from each controller during migration to N4. After migration, if you choose to not create new certificates, you can import the exported certificates back using Workbench and a platform connection.

### Exporting the certificates

The User Key Store contains all certificates with their public and private keys. The User Trust Store contains one or more root CA certificates with only their public keys.

**Prerequisites:** The company serves as its own certificate authority.

- Step 1** Using Workbench, access the controller platform's **Certificate Management** utility. To do this, either open a platform connection and click **Tools**→**Certificate Management** or open the station and double-click on **CertManagerService** (under **Config** > **Services** > **PlatformServices**).
  - Step 2** To export the station's server certificate with its private key, click the **User Key Store** tab, select the certificate and click **Export**.  
  
You need to export the unique server certificate from the User Key Store for each controller station.
  - Step 3** Enable the **Export the private key** check box and enter an encryption password to protect the private key in this file.
  - Step 4** To export a root CA certificate, click the **User Trust Store** tab, select the certificate and click **Export**. Typically, this only needs to be done once because the root CA certificate is the same in every controller station).  
  
**NOTE:** It is not necessary to export certificates from the System Trust Store as these are default certificates found in every System Trust Store. It is only necessary to export any additional certificates that stored in the User Trust Store.
  - Step 5** Repeat the steps above to export the server certificate for each controller station to be migrated.
- Make sure exported certificates files are available to the Workbench PC to use later. For related details, refer to the *Niagara Station Security Guide*.

## Configuring a station to migrate users

If your N4 users will use the HTML5 prototype, which does not exist in AX, you must enable the `User Defined 1` configuration flag on the `web_WebProfileConfig` property of each user prototype in your AX stations before running the migration tool.

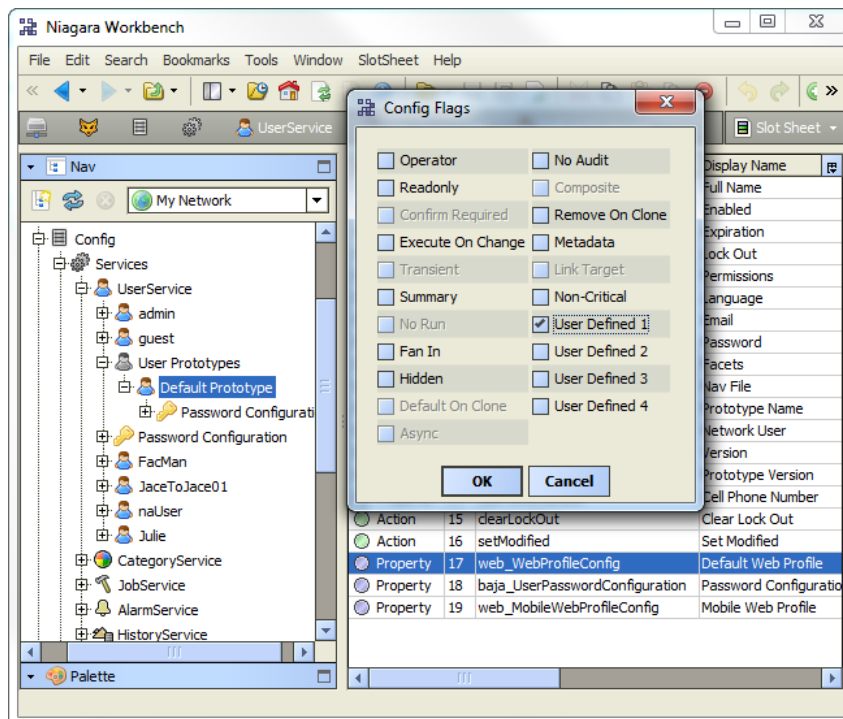
**Prerequisites:** You have Workbench access to the remote station.

**Step 1** Expand the **Config→Services→UserService→User Prototypes** node in the station Nav tree.

**Step 2** To view the slot sheet, right-click the user prototype and click **Views→Slot Sheet**.

**Step 3** To access the configuration flags, right click the `web_WebProfileConfig` property.

The **Config Flags** window opens.



**Step 4** Enable the `User Defined 1` flag and click **OK**.

## Relocating the Kerberos keytab file

If your AX-3.8 stations use Kerberos authentication for user services (for example, `LdapV3ADUserService`) and they use a “keytab file” supplied by the site’s Kerberos administrator, the migration tool requires this file to reside under an “ldap” subfolder of each such AX-3.8 station. This procedure relocates the Kerberos keytab file prior to migration.

**NOTE:** If applicable, do this before making source station backups for use with the migration tool.

**Step 1** Using Workbench, open the station (Foxs or Fox), expand the **Config** node, and navigate to the property sheet of the `UserService`’s authenticator.

For example: **Services > LdapV3ADUserService > ActiveDirectoryConfig > authenticator**

The **Key Tab Location** property ORD value references the current location of the keytab file. Keep this view open.

**Step 2** If it is a *remote station*, open a *new tab* in Workbench, and open a platform connection to the remote host and access the **File Transfer Client** view.

- Step 3** In the (remote) right-side “Files on IPaddress” area, navigate to **stations→stationName**, and create a subdirectory titled `ldap`. This is the target location for the `keytab` file.
- Step 4** In the same right-side area, navigate to the **Key Tab Location** noted in [Step 1](#). Select and transfer the `keytab` file from the remote (right-side) to the local (left-side).
- Step 5** In the same right-side area, navigate to the **stations→StationName→ldap** folder created in [Step 3](#), then select and transfer the `keytab` file back from the local (left-side) to the remote (right-side).  
The `keytab` file should now be in the `!stations/stationName/ldap` folder.
- Step 6** Switch to the Workbench tab showing the property sheet of the UserService’s authenticator and edit the **Key Tab Location** property ORD value to match the new location of the `keytab` file. Click **Save**.
- Step 7** Save the station (right-click the **Config** node, click **Save**).
- Step 8** Repeat all steps above for each applicable JACE station to be migrated to N4.

If this is a local AX-3.8 station, such as a Supervisor station, you can use Windows Explorer to make the new `ldap` subdirectory under the `!stations/stationName` folder, and copy and paste the referenced `keytab` file into it. Be sure to update the authenticator’s **Key Tab Location** value with the new location, and save the station database (steps [6](#) and [7](#)).

After relocating the Kerberos `keytab` files and updating authenticator properties, test out the operation in AX-3.8. A successful operation should continue after the station is migrated to N4.

## Station backups

For any AX-3.8 platform you are migrating, make a station *backup* using Workbench. You will use this station backup `dist` file as the source when running the migration tool (`n4mig.exe`) from the command prompt of a console window.

**CAUTION:** Backups for the purpose of station migration should be made only from the BackupService of the running AX-3.8 station.

When you migrate a backup `dist` that was made using the **Platform Backup** available from the **Platform Administration** tool, this contains all the stations that are on the platform. For non-embedded platforms, this may be multiple stations, as subordinate stations are often copied to the Supervisor.

You should NOT use the **Station Copier** to make copies for migration.

The proper source for a migration is Niagara Backup Distribution file from a station's BackupService, obtained from the host upon which the original station is running. The Backup contains the necessary additional information to correctly migrate the station; a station folder does not. Also, you should use only backup distribution files obtained from the host upon which the original station is running for the source of the migration.

Most of the time there will be one station in the backup that is to be migrated, or at most only a few. If there is more than one station, you will be shown a list of the available stations in the backup. Then you will be prompted to enter a choice selecting which station to migrate. Following, is an example of migration tool output when run on a backup containing nine stations:

```

INFO [09:48:50 29-Apr-15 EDT][sys] Niagara runtime booted
("C:\niagara\niagara-4.0.13.3.550") on Win-CE9A-87C6-1526-58EF
[09:48:50 29-Apr-15 EDT][migration]
-----
[09:48:50 29-Apr-15 EDT][migration] Migrating station backup
localhost_demo10_4.dist to backup_localhost_demo10_4.dist
The following station folders were found in this backup:
1 badCop
2 badCop_oldPwds
3 cgAxBac
4 cgOrdsAx
5 demoAppliance
6 goodCop
7 j38
8 nccb11320
9 nccb11602s1_ax
Please select a station from the backup to migrate:
8
Station to be migrated: nccb11320
-----
Migrating station nccb11320 to nccb11320

```

### Setting BackupService properties

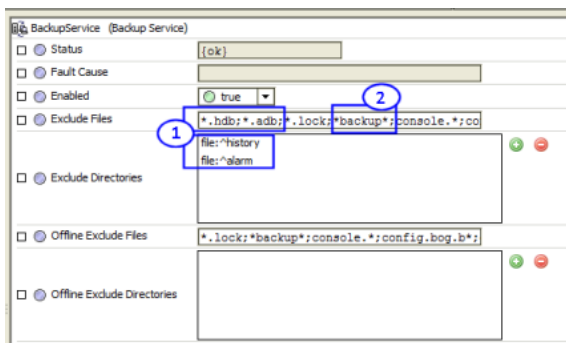
Prior to making a station backup, set properties as needed in the running station's **BackupService**. By default, backups exclude both the history and alarm databases. Other items are also excluded, such as prior saved station database copies, console outputs, and lock files. In most cases, you want to migrate history and alarms databases with your station to Niagara 4, so you need to modify default properties.

#### Prerequisites:

Stations are configured and running on a host compatible with Niagara 4.

In general, this is the recommended backup method for *all platforms*, and the only supported method when making a local backup at the Supervisor PC.

**Step 1** In Workbench, open the station and access the **BackupService** property sheet.



Related BackupService properties shown above are:

- a. In the BackupService for each AX-3.8 station to be migrated (whether host or Supervisor):

**Exclude Files:** *remove* \*.hdb; \*.adb;

**Exclude Directories:** *remove* file:^history and file:^alarm

- b. In the Supervisor station's BackupService, *if configured for provisioning*:

**Exclude Files:** *remove* \*backup\*;

This allows prior station backups to be brought over to the new N4.0 Supervisor.



**Step 2** Review the **Exclude Files** and **Exclude Directories** settings and make adjustments as necessary. These two properties apply to Fox *online* backups, that is, backups you initiate while the station is running.

**Step 3** The bottom two exclude properties apply when you initiate an offline backup with the station *stopped*, using a platform connection and the **Platform Administration** view. By default, alarms and histories are *included* (no **Offline Exclude Directories** entries, also as shown above).

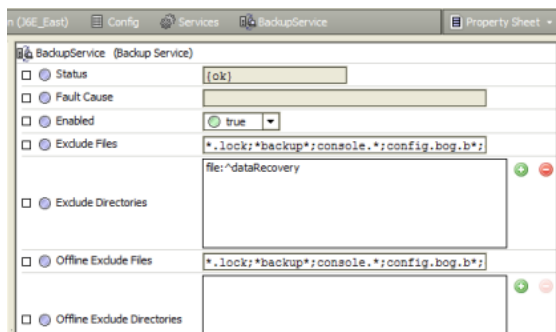
**NOTE:** Make only *online* Fox backups (with station running) for any local station, such as a Supervisor. Otherwise, if you run an offline backup from the **Platform Administration** view, it includes all stations that may be on that platform. The migration tool rejects such a backup file, as it expects only a single station to be in the backup file. Online Fox backups are more convenient to run than offline backups.

**Step 4** Save any changes made.

## Examples

The following figure shows an example BackupService configured in JACE station.

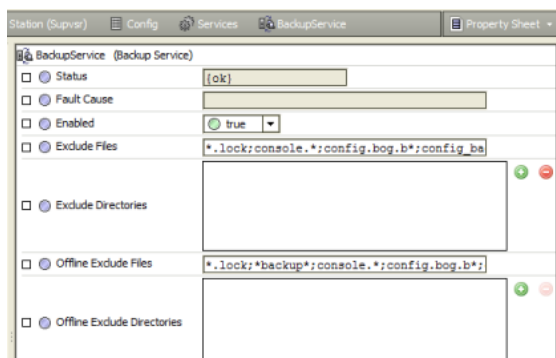
Figure 10 Example BackupService properties in JACE station



Note that **Exclude Directories** still includes `file:^dataRecovery` (not useful in migration).

The following figure shows an example BackupService in a Supervisor station that is configured for provisioning.

Figure 11 Example BackupService properties in Supervisor station configured for provisioning



Note that **Exclude Files** has no entry for: `*.backup*`; (to allow prior provisioning backups to be brought over to the N4 Supervisor).

## Making source station backups

A station backup (`.dist` file) from a **Backup** command is the preferred archive source when migrating AX-3.8 station.

### Prerequisites:

The station's BackupService is configured appropriately.

**Step 1** Using Workbench, you can make either an online backup (typical) or an offline backup.

- For an online backup, right-click the 🐼 **Station** node and select 🗄️ **Backup Station**.  
The station continues running while first it saves its configuration locally, then saves a backup `.dist` file in the `backups` folder of your `niagara_home` (install) folder.
- For an *offline* backup, make a platform connection, *stop* the station from the **Application Director**, then, from the **Platform Administration** view, select **Backup**.

**NOTE:**

An offline backup applies to JACE stations only. For any local station, such as a Supervisor, you must make an *online* Fox backup (with station running).

After the backup completes, you may *restart* the station so that it can continue working while you run the migration tool in preparation to convert the platform.

**Step 2** As a best practice, consider renaming the resulting backup `.dist` file to a short, meaningful name.

This simplifies typing in the source `.dist` file name in the command-line migration tool. Do not rename the `.dist` extension.

For example, if the file name is `backup_stationName_141221_0757.dist`, shorten it to: `stationName.dist`, where `stationName` is a logical station name.

**Step 3** If the new Supervisor or engineering workstation is on a different PC, copy the backup `.dist` file to a location on that PC.

If the new station is on the same PC, simply leave all the backup `.dist` files in the default `backups` folder.

For best performance, do not save `backup.dist` files in the Niagara 4 System home or User home directories. The files can be located anywhere else, for example: `C:\AxBackups`.

**Step 4** Repeat this procedure for all AX-3.8 stations to be migrated.

## Secure license files

Any converted platform (controller, Supervisor, or workstation) requires Niagara 4 license file, as existing AX license files are *incompatible*.

- Before upgrading licenses, *back up* existing NiagaraAX license files for Windows hosts, and store them in a safe place.
- You can perform migration work on all archived AX-3.8 stations without all N4.0 licenses secured, provided that you have at least *one* N4.0 Supervisor or engineering workstation converted and licensed. However, you should not start upgrading controllers without first securing each license in preparation for the upgrade process.

**NOTE:** The Niagara 4 license is not backward compatible with any NiagaraAX install.

- A controller, converted to N4.0 uses the same host ID as before the conversion. Provided its operating system remains unchanged, a converted Supervisor PC or engineering workstation also uses the same host ID as before the conversion.

Any *new* installation of Niagara 4 (N4.0) on a PC calculates the host ID for the *first time*. The end of the installation typically generates a "license request form" for web browser submittal, and includes this calculated host ID.

You reference the host ID when you request each N4.0 license.

- You need to submit the license request and receive either the license file, or confirmation of it on the licensing server, before you can use Workbench. For related details, refer to the Niagara 4 Installation Guide.

- When you receive a new N4.0 license file for your Supervisor, do not copy it back to any *NiagaraAX* home's `licenses` folder on the same PC—otherwise Workbench no longer works. This can also occur if NiagaraAX host downloads the (N4) license offered by the licensing server.

In hybrid systems that combine both N4.0 and AX-3.8 hosts, you need to *retain* Workbench to use for possible station modifications to controllers that remain at AX-3.8.

## Run the migration tool

Included with Niagara 4 Supervisor or engineering workstation is a command line utility that you run from a console. This utility is known as the N4 migration tool or migrator.

### About the migration tool

The migration tool takes a source file, typically AX-3.8 station backup `.dist` file, and outputs a migrated N4.0-compatible station folder. You can then use Workbench to open a platform connection to the target platform (for example, a converted controller), and install this station using the N4.0 platform **Station Copier**.

Important points to remember are:

- A source backup `.dist` file is *not harmed* in any way, regardless of the migration outcome. Migration output always goes to a different location, along with a text log file that contains execution details.
- The migration tool does not require AX-3.8 installed on the same PC, only a path to the source backup `.dist` files.
- You run the migration tool from the standalone Niagara **Console** window, typically launched from the Windows Start menu.

The following is the log generated while running the migration tool on a very simple Supervisor station backup file. The migrator ran in a standalone Niagara **Console** window.

**NOTE:** Running the migrator in the embedded Workbench Console is not supported, as it does not properly process the necessary user inputs that may be required if your NiagaraAX station contains passwords that need to be encrypted with a pass phrase.

**Figure 12** Example migration tool processing a Supervisor station backup

```

-----
C:\Niagara\Niagara-4.1.xx.xx>n4mig C:\niagara\niagara-3.8.111\backups\
backup_Supvsr_150526_1545.dist
INFO [15:48:41 26-May-15 EDT][sys.registry] Up-to-date [92ms]
INFO [15:48:41 26-May-15 EDT][sys.registry] Loaded [32ms]
INFO [15:48:42 26-May-15 EDT][sys] Niagara runtime booted
("C:\Niagara\Niagara-4.1.xx.xx") on Win-23A9-FCD0-B958-4E02
[15:48:42 26-May-15 EDT][migration]
-----

[15:48:42 26-May-15 EDT][migration] Migrating station
backup_Supvsr_150526_1545.dist to backup_Supvsr_150526_1545.dist
Station to be migrated: Supvsr
-----

Migrating station Supvsr to Supvsr
Migration Templates:
  1: Controller Migration Template (ControllerMigrationTemplate.ntpl)
  2: Supervisor Migration Template (SupervisorMigrationTemplate.ntpl)
You can also use 'c' for default Controller and 's' for default Supervisor template.
Please select a Migration Template: 2
Using Migration Template SupervisorMigrationTemplate.ntpl

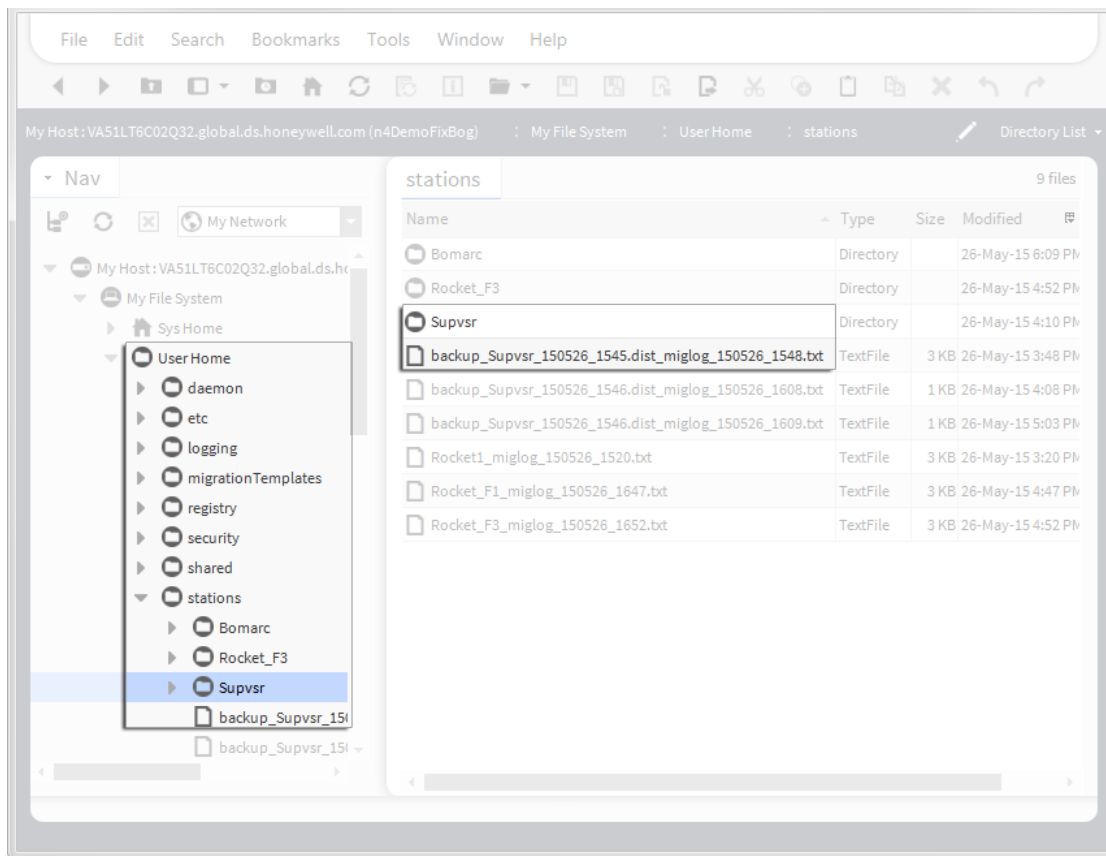
Completed Migration
Source: C:\Users\John\Niagara4.0\Rocket Industries\migTemp\Supvsr
Target: C:\Users\John\Niagara4.0\Rocket Industries\stations\Supvsr
Migration Report: C:\Users\jDoe\Niagara4.0\Rocket Industries\stations\Supvsr_miglog_
_1505261548.txt

Important Migration Notes - see Migration Report for details
Using Migration Template SupervisorMigrationTemplate.ntpl
config.bog: REMOVED all uses of type niagaraDriver:NiagaraFoxService in bog

```

In the example above, the migration tool was launched with only the “n4mig” command and the source backup .dist file path, without any options or explicit migration output location. As shown, the migration template was not specified, so the tool paused and prompted for the migration template (1 or 2). After this was entered, the tool continued processing and completed the migration.

The migration tool posts information while processing the backup .dist file. By default, the migration output goes to the stations folder of your Workbench **User Home**, as shown in the following figure.

**Figure 13** Example migration tool output in Workbench User Home (station folder, migration log file)

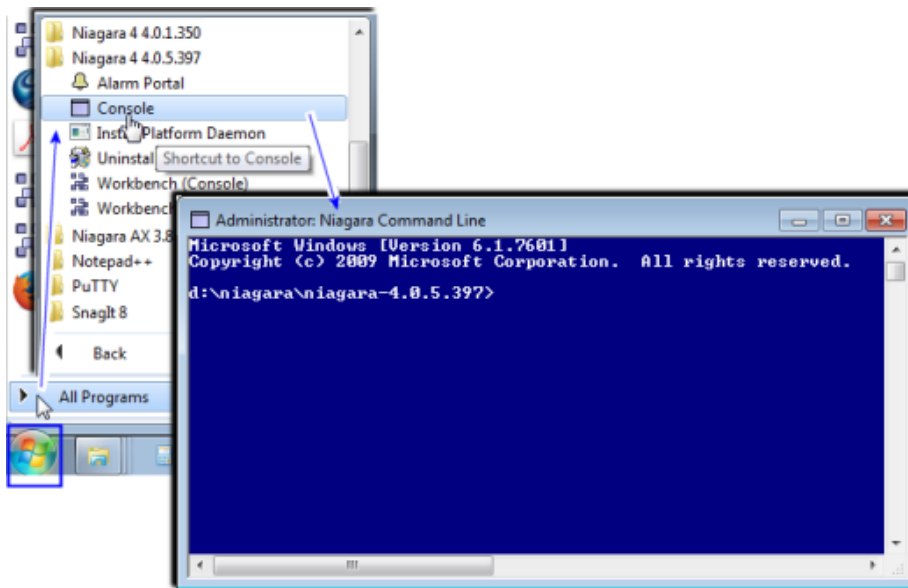
In this example, notice that the migration process created a `Supvsr` folder and an associated log file in the `stations` folder. The target station name is automatically determined from the station name inside the station backup `.dist` file.

Entries in the log file (migration report) display source and target locations for items written, actions performed, and so on. If needed, you can use command line options to create a greater level of log detail.

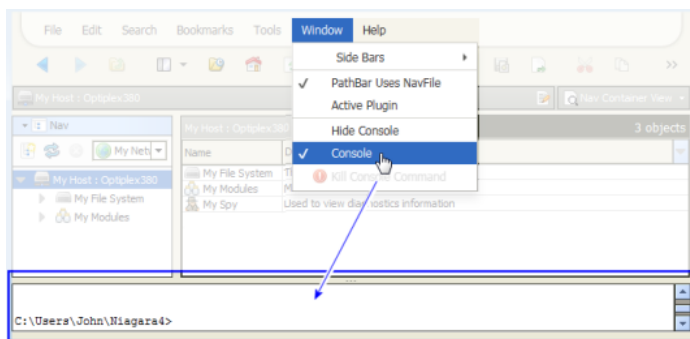
### **Console choice for migration**

You should use only the Niagara console and not the embedded Workbench Console to run the migration tool.

For migration, use the standalone Niagara command line console window, which you typically launch using the shortcut from the Windows Start menu. You may also use a standard Windows command line tool available at `[C]:\windows\system32\cmd.exe`, for example.



**IMPORTANT:** The embedded console, that is, the Console prompt available within Workbench (shown here), cannot be used for migration purposes.



## Running the migration tool

With Niagara 4 installed on your PC, you run the migration tool on the AX-3.8 station backup `.dist` file to migrate a station, or run it on a saved AX-3.8 BOG file (`.bog`) if necessary. NiagaraAX does not have to be installed on this PC—although in many cases, it may be.

**NOTE:** For any station that uses modules made using the `ProgramModule` feature, you will need to migrate those modules to N4 (refactoring them) before the station can be successfully migrated. See [Migrating modules made with the `ProgramModule` component, page 41](#).

You must have access to saved AX-3.8 station backups, for migrating stations. See [Making source station backups, page 33](#).

### Running the migration tool

**Step 1** At the PC, open a standalone Niagara Console window using the shortcut from the Windows Start menu.

**NOTE:** Do not use the Workbench embedded Console because it cannot accept keyboard inputs, and thus it hangs on input selections.

If you have a number of station backups in a single folder to migrate, it may be simplest to change the console window's current directory to that location. For example, your console prompt may be similar to: `C:\niagara\niagara-3.8.111\backups>`

The above would apply if you have both NiagaraAX-3.8 and Niagara 4 installed on your PC. Alternatively, enter the full path to source station backup `.dist` files in the commands.

- Step 2** Enter the migration tool command (`n4mig`) using syntax that specifies the source backup file, at a minimum. By default (if left unspecified), the migration output targets the `stations` folder of your Workbench **User Home**. Generally, this is the recommended method: specify source file only.

If you changed the console's current directory to the location of station backups your command could be:

```
n4mig -t:2 backup_Supvsr_141117_1707.dist
```

(to migrate a backup `.dist` with that default file name, for a station named "Supvsr").

**CAUTION:** Do not attempt a station migration using the Workbench embedded Console. This console cannot accept keyboard inputs, and thus will hang waiting for your input selection. The only workaround at that point is to restart Workbench.

While the migration tool runs, operation activity is reflected in the console window. When finished, the ending lines in the console window state where the target output results and log file can be found.

For reference details on the `n4mig` command, see [Migration tool command usage, page 39](#). For general information, see [About the migration tool, page 35](#).

## Migration tool command usage

A number of commands may be added on the migration tool command line.

```
n4mig [options] <source> [target]
```

Parameter	Required?	Description / Notes
source	Yes	Typically the AX-3.8 station backup <code>.dist</code> file, but it may also be a bog file, palette file, station folder, or a zip archive of a station folder. You can enter an absolute file path, or a path relative to the current directory of the Niagara 4 console.
target	No	<p>(Optional) The output station folder name to write the migrated station or BOG file. An absolute file path or a relative path can be entered. Any relative path is relative to the <code>stations</code> subfolder of your Workbench <b>User Home</b>, that is <code>C:\Users\userName\Niagara4.x\&lt;brand&gt;\stations</code></p> <p><b>TIP:</b> Generally, in a station migration you do not specify a target, as you typically want to retain the existing station name in the migrated station. If it is not specified, the migration tool derives it from the name of the source, its parent folder, or the name of a folder within the archive—whatever fits best. The exception is a source named <code>config.bog</code>. In that case, the target is required. If the supplied target is a relative path, the migration tool targets the result relative to the root of <code>niagara_user_home/stations</code>.</p> <p>If you do specify a target folder name, it cannot already exist (by default an existing station is never overwritten); however, any file path above it must exist. For a related example, see <a href="#">Migrator syntax example 2, page 41</a>.</p>

Options	Description / Notes
-version	Print NRE version information for this Workbench instance.
-log:level	<p>Specify the log level, where level is one of the following: all, finest, finer, fine, config, info, warning, severe, off</p> <p>The default is "info". This produces the text log file migration report, which lists <i>all the changes</i> made to the AX station as a result of the migration. This file is created in the root of the <code>stations</code> folder in your Workbench <b>User Home</b>. Of course the default ("info") also includes any more problematic "warning" or "severe" messages.</p> <p>After becoming familiar with migrations, you could specify the "warning" log level instead—that lists <i>only</i> the more problematic entries, shortening the log report.</p>

Options	Description / Notes
-keepTemp	Do not clean up temp directories after execution. If used, a "migTemp" folder is left in your Workbench User Home, with various subfolders of intermediate files used in the migration process. Only use -keepTemp option for troubleshooting purposes.
-showSystemLogs	Shows messages from all loggers; does not hide non-migrator logs.
-help, -?	Print the usage information. By default you see this same information if you enter the n4mig command alone, that is without any other parameters or options.
-o	Overwrite the target station folder, if it already exists.
-t:<template>	<p>When migrating a station backup .dist, this is the template type to use, where template is one of the <i>migration station template types</i> available on your system. Choices are:</p> <p>1 = Controller migration template (for example, ControllerMigrationTemplate.ntpl)</p> <p>2 = Supervisor migration template (for example, SupervisorMigrationTemplate.ntpl)</p> <p><b>NOTE:</b></p> <p>You can also use 'c' for the default Controller and 's' for the default Supervisor template.</p> <p>Default migration template files listed above are found in your <b>Sys Home</b> folder under !defaults/workbench/migrationTemplates. An empty migrationTemplates subfolder is also created in your Workbench <b>User Home</b>, to store any customized migration station template files. See the Niagara Templates Guide for more details on working with Niagara 4 templates.</p>

### Migrator syntax example 1

Here, the current directory of the Niagara console window has been changed to the backups folder of the AX-3.8 installation home, such that the prompt is C:\niagara\niagara-3.8.111\backups>

A command is entered specifying only the source, and *not target* (recommended for station migration).

```
C:\niagara\niagara-3.8.111\backups>n4mig -t:1 backup_J300E_W_150210_1715.dist
```

The migration tool processes the J300E\_W backup .dist file in the current directory, as JACE station, and the target output goes under the stations folder of your current Workbench **User Home**. The standard log file (migration report) is also created in the root of the stations folder.

So here, migration produces these items:

- C:\Users\userName\Niagara4.x\<brand>\stations\J300E\_W (complete station folder)
- C:\Users\userName\Niagara4.x\<brand>\stations\J300E\_W\_miglog\_150212\_0846.txt (log file or "migration report")

The name of the migrated station (folder), in this case "J300E\_W", is determined by the station name *inside* the station backup .dist file, and is not affected by the name of the .dist file. Therefore, you could *re-name* the source file from backup\_J300E\_W\_150210\_1715.dist to, say, J3Wbu.dist before running the migration tool, and run the command (again, specifying only the source):

```
C:\niagara\niagara-3.8.111\backups>n4mig -t:1 J3Wbu.dist
```

You would have essentially the same results, with these items:

- C:\Users\userName\Niagara4.x\<brand>\stations\J300E\_W (complete station folder)
- C:\Users\userName\Niagara4.x\<brand>\stations\J3Wbu\_miglog\_150212\_0847.txt (log file or "migration report")

This may be useful to reduce the amount of typing in the console when migrating stations to N4.



## Migrator syntax example 2

Here, the Niagara console window has been left at the default N4.0 directory (say when you open it from the Niagara 4 Console Start menu shortcut), and absolute source and target directories are specified.

```
C:\Niagara\Niagara-4.1.xx.xx>n4mig -t:2 -log:finer C:\niagara\niagara-3.8.111\backups\backup_BigSup_150210_1730.dist F:\migratedStations\BigSupN4
```

The migration tool processes the station BigSup backup .dist file from the absolute source path given, as a Supervisor station, and the target output goes to the absolute “F: drive” location given (perhaps a removable USB drive) in folder migratedStations\BigSupN4. The log file (migration report) is also created there, but with finer level detail than the default.

So in this case, migration produces these items:

- F:\migratedStations\BigSupN4 (complete station folder)
- F:\migratedStations\BigSupN4\_miglog\_150212\_0835.txt (log file with finer detail)

The folder F:\migratedStations must already exist, or else the command fails. The specified target station folder BigSupN4 must not already exist, or else the command fails—it never overwrites an existing station folder (unless the -o option switch is included in the command).

The target station folder determines the migrated station’s name, unlike when *not specifying* a target station folder. In this example, the output station folder (and N4 station name), will be BigSupN4, which is *different* than the one in the source backup .dist file. Generally this is not recommended when migrating stations, especially if they are part of a NiagaraNetwork of stations, as other stations store remote station names (in configurations of NiagaraStation and StationRecipient components, as two examples).

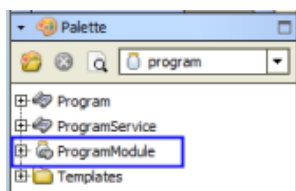
Therefore, when a migrating a station from an AX-3.8 station backup .dist file, it is typically best to specify only the source .dist file name, and not specify any target. An example of this is described in [Migrator syntax example 1, page 40](#). After the migration tool completes, if needed, you can then manually copy or move the migrated station folder to another location. For example, you could copy the migrated station folder under a previously created “F:drive” location, say F:\migratedStations.

## Migrating modules made with the ProgramModule component

If your installation uses custom modules of Program objects (components) made using the ProgramModule component, they must be refactored for Niagara 4 before using them with any migrated AX-3.8 stations. If you do not migrate the, Program objects they will be deleted in the migrated station.

Prerequisite: You need a working knowledge of the AX-3.8 ProgramModule (available in the **program** module’s palette), including its **Program Module Builder** view.

Figure 14 ProgramModule in AX-3.8 program palette

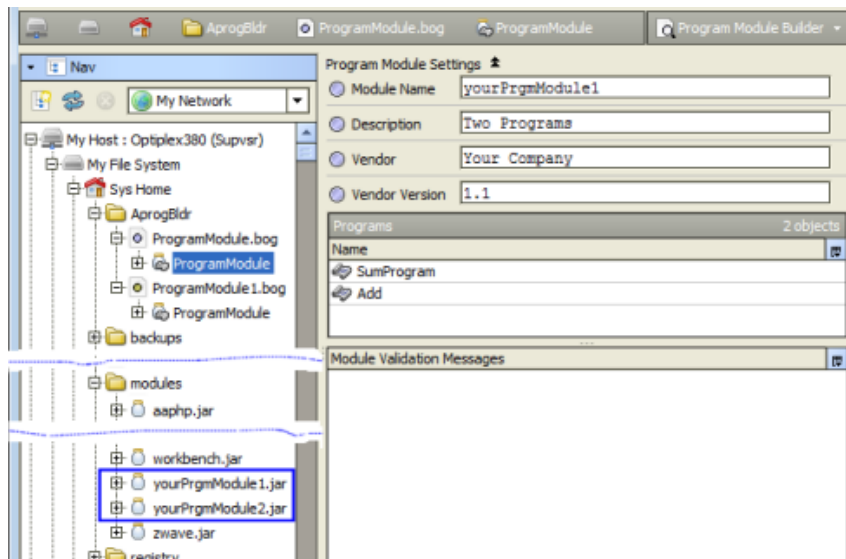


In the NiagaraAX installation, there are different ways the ProgramModule feature can be used to create versioned module JAR files that contain one or more Program objects:

- ProgramModule components copied into a folder under the Workbench file space of the local host, such as a Supervisor, each saved as a BOG file. These ProgramModule components contain Program objects copied from stations, used to build local modules with these Programs.

**NOTE:** This is the recommended use of ProgramModules.

Figure 15 ProgramModules saved as BOG files in the Workbench file space



The figure above shows two such ProgramModule BOG files, under an “AprogBldr” folder in the Workbench home. The resultant module JARs are also shown in the local modules folder.

- One or more ProgramModule components copied into a station run on a local host, such as a Supervisor. Typically, this station also has the original Program objects that are now replicated in the station via local modules built by the ProgramModule(s).
- Simply using the Workbench `program` palette and the ProgramModule in it, pasting in Program objects from stations, then compiling and building local modules with these Programs. In this case, ProgramModules are not persisted—only the modules built using them.

**NOTE:** Such modules cannot be refactored for N4, unless you first use Workbench to copy ProgramModules from the `program` palette into a folder in the Workbench file space, and reconfigure again. Once saved as AX-3.8 BOG files, you can run migration on the ProgramModules.

In all but the last case, migration of the modules is straightforward. Migration requires running the source AX-3.8 ProgramModule through the migration tool (either as a BOG file, or if within a station, in a station backup `.dist` file). Next you use Workbench on each migrated ProgramModule to recompile the contained Program(s) and then rebuild the module, which refactors it for Niagara 4.

### ***Migrating modules from ProgramModules saved as BOG files***

If you have saved one or more ProgramModule components in your Workbench file space, you can run the folder (BOG) file containing them through the N4 migration tool.

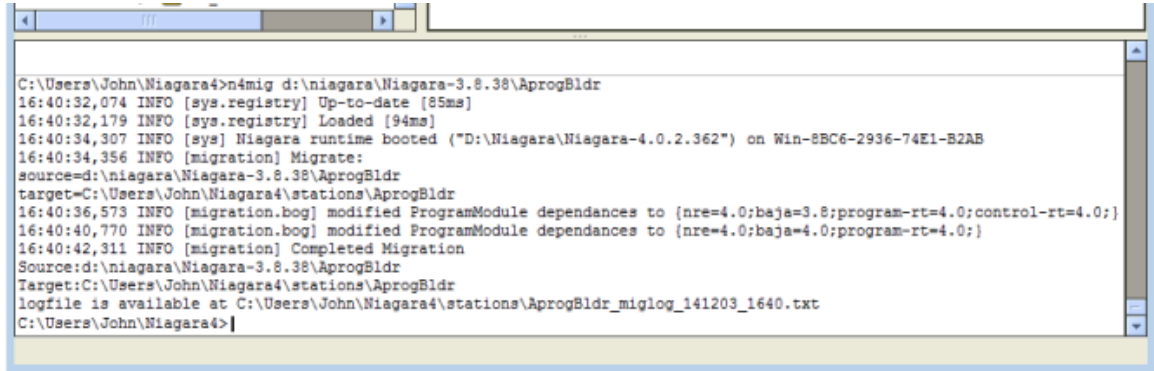
If necessary, you can do this on a PC still running an AX-3.8 Supervisor station, but with both Workbench and Workbench installed.

- Step 1** At the Workbench PC, open a console. This can be either a standalone Console window or the Console available in Workbench. See [Console choice for migration, page 37](#).
- Step 2** Enter the migration tool command (`n4mig`) using syntax that specifies the source folder with ProgramModule BOG files. If using an absolute file path, an example command could look similar to:

```
n4mig C:\niagara\niagara-3.8.111\AprogBldr
```

for the `AprogBldr` folder as shown in the previous [Figure 15](#) [Figure 17 on page 34, page 42](#). Leaving the target unspecified (as here), results in a subfolder under stations in your Workbench **User Home**.

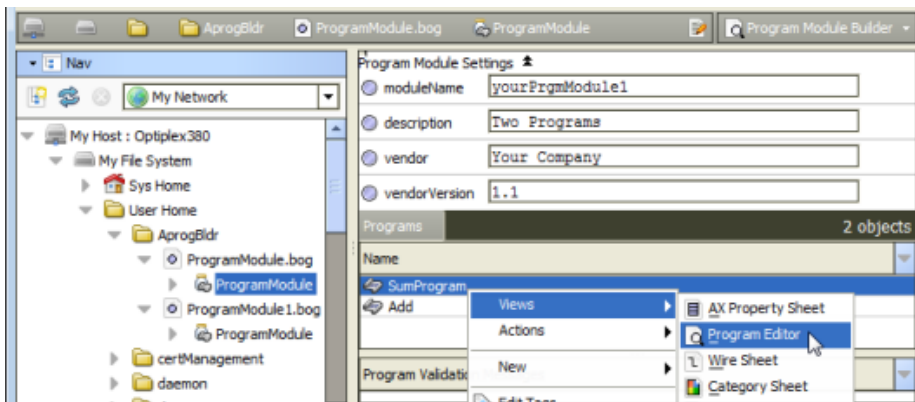
**NOTE:** After the tool finishes, you can simply cut and paste this “non-station” folder to a better location.






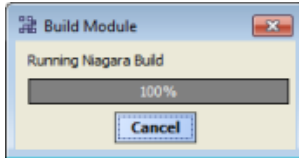
```
C:\Users\John\Niagara4>n4mig d:\niagara\Niagara-3.8.38\AprogBldr
16:40:32,074 INFO [sys.registry] Up-to-date [85ms]
16:40:32,179 INFO [sys.registry] Loaded [94ms]
16:40:34,307 INFO [sys] Niagara runtime booted ("D:\Niagara\Niagara-4.0.2.362") on Win-8BC6-2936-74E1-B2AB
16:40:34,356 INFO [migration] Migrate:
source=d:\niagara\Niagara-3.8.38\AprogBldr
target=C:\Users\John\Niagara4\stations\AprogBldr
16:40:36,573 INFO [migration.bog] modified ProgramModule dependences to {nre=4.0;baja=3.8;program-rt=4.0;control-rt=4.0;}
16:40:40,770 INFO [migration.bog] modified ProgramModule dependences to {nre=4.0;baja=4.0;program-rt=4.0;}
16:40:42,311 INFO [migration] Completed Migration
Source:d:\niagara\Niagara-3.8.38\AprogBldr
Target:C:\Users\John\Niagara4\stations\AprogBldr
logfile is available at C:\Users\John\Niagara4\stations\AprogBldr_miglog_141203_1640.txt
C:\Users\John\Niagara4>
```

While the migration tool runs, operation activity is reflected in the console window. When finished, the ending lines in the console window state where the target output folder and log file can be found. As shown above, you are *not* prompted for a station “type” (unlike if migrating the AX back-up .dist file).

- Step 3 If the target folder was created in your stations folder, move (cut and paste it) to another location in your Workbench **User Home**. You can do this in the Nav tree, using right-click commands.
- Step 4 In the Nav tree, expand the target folder to see the BOG file(s) with ProgramModule(s).
- Step 5 Double-click a ProgramModule for its **Program Module Builder** view.

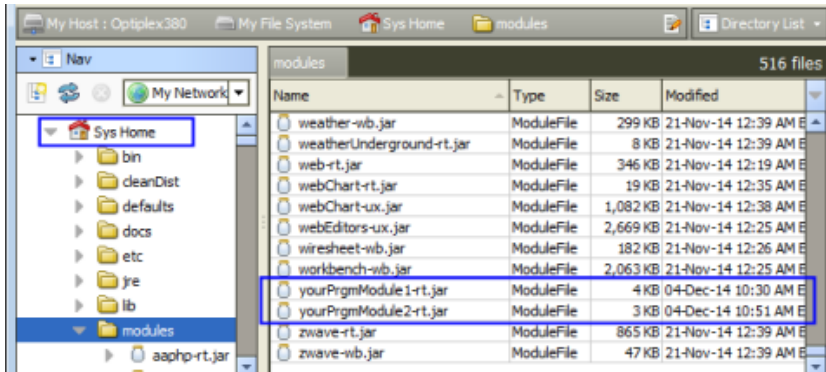


- Step 6 Right-click one of the contained Programs and select **Views→ Program Editor** (as above).
- Step 7 In the **Program Editor**, click  **Save & Compile (ProgramEditor→ Save&Compile)**. Activity occurs in the console area at the bottom of the Workbench window.  
If successful, the Program status should be up-to-date, and the  **Save Bog** icon should be available.
- Step 8 Click **Save Bog**.  
**NOTE:** If a Program compile fails, you must make one or more modifications to that Program, working in its **Program Editor**.
- Step 9 Repeat steps 6 and 7 for all Programs in the selected ProgramModule, so that *all* Programs have been successfully compiled and saved.
- Step 10 Double-click the ProgramModule for its **Program Module Builder** view, then click  **Build**.



As shown above, a popup dialog appears while the module is created. Completion may take several seconds. Related details should also appear in the console area at the bottom of the Workbench window.

- Step 11 If multiple ProgramModules are in the folder, repeat steps 5 through 9 for each one, so that a module for each is created. In the example folder shown here, there are two ProgramModules.



As shown above, the modules named `yourPrgrModule1-rt.jar` and `yourPrgrModule2-rt.jar` were created by the two ProgramModules.

- Step 12 When finished migrating modules, close and restart Workbench. This is necessary to update the registry. Modules should now be ready when running the N4 migration tool on a backup `.dist` file of any AX-3.8 station that uses them. See [Running the migration tool, page 38](#).

### Migrating modules from ProgramModules in a station database

If ProgramModule components are used within the AX-3.8 station (instead of in standalone BOG files in our Workbench file space), you need to migrate that station in the standard way, that is using a station backup `.dist` file as the source.

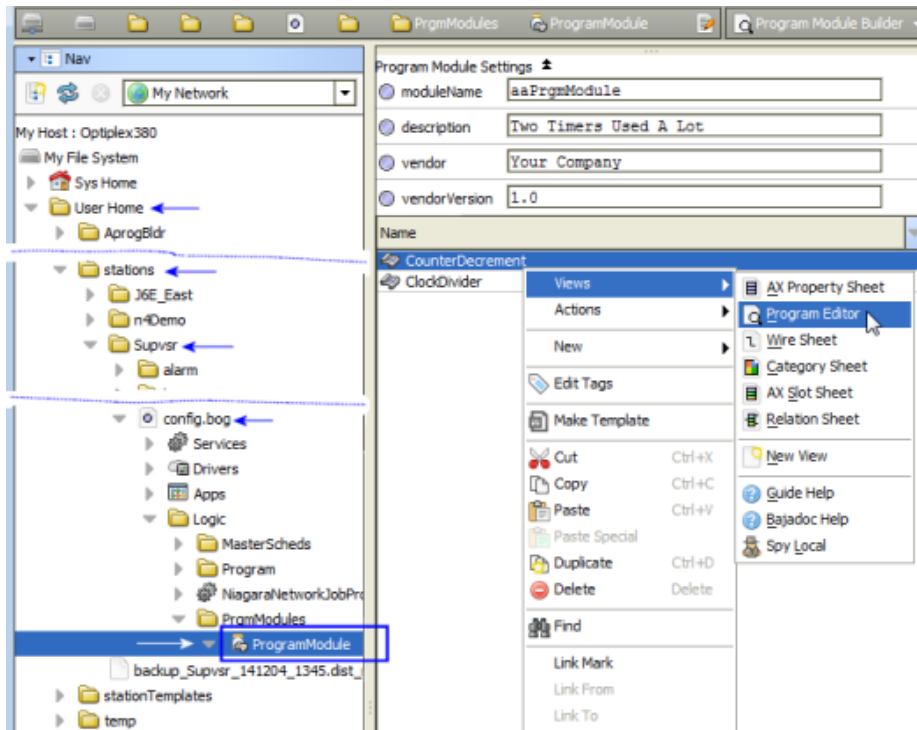
#### Prerequisites:

However, before installing that migrated station, or any other migrated station that uses modules produced by it, you must use Workbench to get refactored modules from its ProgramModules. This means recompiling and saving Programs in each ProgramModule, then running a build on each one. Then you must migrate that station *again* (now that the necessary refactored modules are available).

#### NOTE:

If necessary, you can do this on a PC still running the AX-3.8 Supervisor station, but with both Workbench and Workbench installed.

- Step 1 Run the migration tool on the saved AX-3.8 station backup `.dist` file.
- Step 2 In the Workbench Nav tree, expand the `stations` folder under your **User Home**, to see this newly-migrated station.
- Step 3 Expand the station's `config.bog` file, and navigate to the first ProgramModule.
- Step 4 Double-click the ProgramModule for its **Program Module Builderni**



Step 5 Right-click one of the contained Programs and select **Views→ Program Editor** (as above).

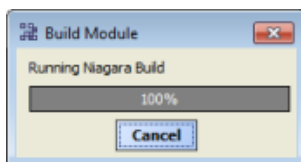
Step 6 In the **Program Editor**, click **Save & Compile (ProgramEditor→ Save&Compile)**. Activity occurs in the console area at the bottom of the Workbench window.

If successful, the Program status should be up-to-date, and the **Save Bog** icon should be available. Click **Save Bog**.

**NOTE:** If the Program compile fails, you need to make one or more modifications to that Program, working in its **Program Editor**. See [Modifying Program objects, page 48](#).

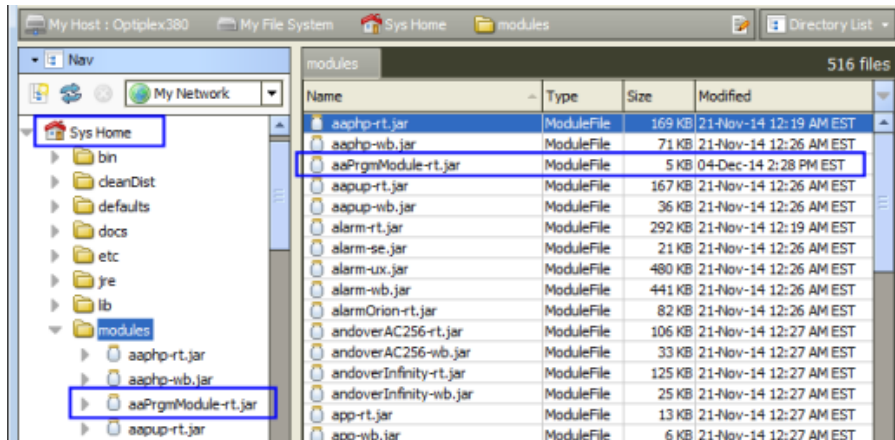
Step 7 Repeat steps 5 and 6 for all Programs in the selected ProgramModule, so that *all* Programs have been successfully compiled and saved.

Step 8 Double-click the ProgramModule for its **Program Module Builder** view, then click **Build**.



As shown above, a popup dialog appears while the module is created. Completion may take several seconds. Related details should also appear in the console area at the bottom of the Workbench window.

Step 9 If multiple ProgramModules are in the folder, repeat steps 4 through 8 for each one.



As shown above, the module named `aaPrgmModule.jar` was created by the ProgramModule.

Step 10 When done migrating modules, right-click the station's `config.bog` file and click **Save**.

Step 11 Close and then restart Workbench. This is necessary to update the registry. Migrated modules should now be ready when running the migration tool on AX-3.8 station backup `.dist` files, including the station with the source ProgramModules.

## Migration details

Details on migration are in the following reference topics:

### Migration execution

The migration tool migrates a source artifact to its appropriate N4 target. The typical source is AX-3.8 station backup `.dist` file. The output (target) is a station folder, in your Workbench **User Home**.

At the conclusion of the tool execution, you see these Source and Target locations listed:

```
09:31:37,355 INFO [migration] Completed Migration
```

```
Source:C:\niagara\niagara-3.8.111\backups\backup_Supvsr_141117_1707.dist
```

```
Target:C:\Users\John\Niagara4.x\<brand>\stations\Supvsr
```

You can then install this migrated station into the daemon User Home of Niagara 4 platform, for example the local platform if a Supervisor, or in a remote platform, such as the migrated station for a controller that has been converted.

Upon execution, the migration tool scans each folder and file in the backup recursively, and migrates each in turn as appropriate. Certain folders, such as the folder tree comprising the history database of a station, are handled separately.

**NOTE:** Any environment files in the backup `.dist` that are outside of the station folder, for example, properties files in the AX platform's `!lib` folder, are not migrated. If you know of any that were edited from default values, and they still apply to N4 platforms, you may need to re-apply changed values in the platform after upgrading to Niagara 4 (however, do not copy entire AX files into the N4 environment).

If desired, do this after installing the migrated station.

For each migrated artifact, the migration tool determines if a FileMigrator is registered to handle migrating that file type. If no special migrator is registered, the default migration is to simply copy the file as is from the source location to the target location.

In the case of BOG file migration, the BogMigrator opens the `.bog` file, and walks the XML element tree. For each element it encounters, it checks to see if there is a BogElementConverter registered to handle converting that type.

- If no converter is registered, the type is simply passed through and re-encoded.
- If a converter is registered, the converter is given the element to process.
- If the element cannot be decoded, this is usually because the module that contains the type existed in AX but was removed for N4. In this case the element will be removed from the station.
- In the case where the N4 equivalent module exists, the registry check provides a converter that can convert the obsolete type into the appropriate N4 type.

## Migration report (log file)

The log file produced each time you run the migration tool answers the question “What did the tool do?” At the default `info` log level, the migration report lists the changes made to migrate the source to the target. If needed, you can have the migration tool generate even more detailed output by specifying another log level (`config`, `fine`, `finer`, `finest`) as an option in your command.

You should *always review the migration report* to make sure that:

- Nothing was removed that is critical to your station’s operation.
- There were no failures, or items that could not be migrated by the tool.

In some cases, issues may require post-migration “cleanup” tasks.

## Inspecting migration reports (log files)

We recommend you inspect migration log files for:

- Migration failures

If any migration failure occurs, this will be noted in the report. You should report any migration failures to your support channel. In some cases it may be necessary to modify this part of the station manually, and your support channel should be able to help with that.

- Program compilation failures

The migration tool attempts to recompile all **Program** objects in the station with the new modules. In some cases, this may not be successful. Programs that cannot be compiled will be noted in the report, and you will need to modify the program manually to allow it to compile.

- Removed station components

Station components whose type or module does not exist in N4, and for which there is not a type to migrate to, are removed. This should not occur frequently, as the modules that were removed for N4 were generally unused or deprecated modules.

If you find that a component has been removed that should not be, please report this to your support channel, as it may be that a converter needs to be developed for that type.

- Any WARNING or SEVERE messages

These messages are included in the migration report prefixed by “WARNING” or “SEVERE”, as appropriate. They indicate a more significant issue, likely a problem with the tool execution. You should inspect items referenced in such messages to make sure migrated artifacts are what you want.

## Post-migration database tasks

Sometimes you may need to perform post-migration tasks on migrated station databases, using Workbench. For example, certain Program objects may need to be changed and recompiled in Niagara 4, as flagged in the migration report (log file). Other possible station changes may be needed too, in certain circumstances.




## Modifying Program objects

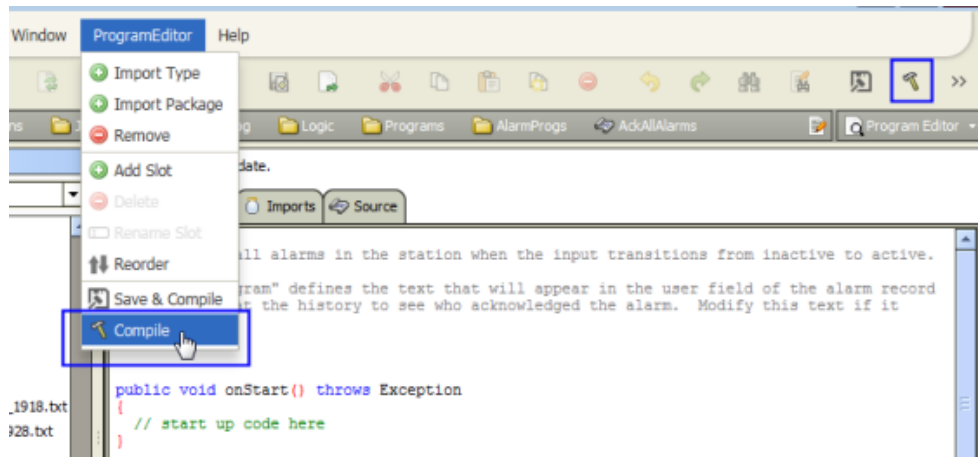
The migration tool attempts to compile all NiagaraAX Program objects (components) in the station to be compatible with Niagara 4, flagging any that fail to compile properly in the migration report, or log file. Using Workbench, you should modify any such Program objects until they recompile successfully, before installing the station.

**Prerequisite:** You must have a working knowledge of Java programming, Program objects, and the **Program Editor** view in Workbench. Access to Developer-level Niagara 4 documentation may be needed.

### Modifying and recompiling Program objects offline

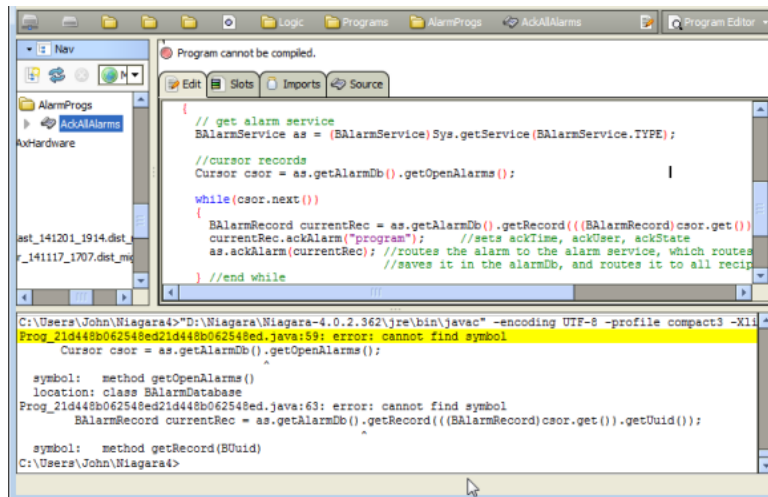
You can open a station *offline* in Workbench to modify and recompile Program objects if necessary, resaving the station (config.bog file) when done. If necessary, you can do this on a PC still running an AX-3.8 Supervisor station, but with both Workbench and Workbench installed.

- Step 1 Open Workbench, if not already open.
- Step 2 In the Nav tree, expand **My File System** and navigate to the station folder of the migrated station that had Program compilation failures.  
Typically, such stations are under your **User Home**, under the **stations** folder.
- Step 3 Expand the station folder, and expand the config.bog file under it.
- Step 4 In the station database, navigate to a Program object identified to have a "compilation failure" in the migration report (log file).
- Step 5 Open the **Program Editor** view for the component. (One way is from the Nav tree, right-click the Program and select **Program Editor**).
- Step 6 In the **ProgramEditor** menu or toolbar, click  **Compile**.



One or more errors result in the Console area at the bottom. Often all possible errors are not included, as the compiler stops on failure and outputs an error. Therefore, once you correct one or two errors, subsequent compile attempts may uncover other errors.





In this example, errors shown relate to the methods `getOpenAlarms()` and `getRecord(BOrd)` having moved from the `BAlarmService` class to a new `AlarmSpaceConnection` class, located in the `javax.baja.alarm` package of the alarm module. To fix this, you would need Developer-level documentation on “breaking changes” in Niagara 4 Alarm API, and make the required changes in the program code (further details are outside the scope of this document).

Depending on the Program object, other possible compile errors may require changes in its package import definitions (**Imports** tab).

- Step 7 Continue with changes until the Program compiles successfully, and click **Save & Compile** and also **Save Bog**.
- Step 8 Repeat steps 4 through 7 for each Program object identified to have a compilation failure.
- Step 9 When finished, in the Nav tree right-click the station’s config.bog file, and ensure **Save** is dimmed. If available (not dimmed), click **Save**.

## Considerations if a station functions as an oBIX server

With the Niagara 4 addition of the new **AuthenticationService**, any oBIX request to a station must be authenticated using the “HTTP Basic Scheme” (HTTP Basic Authentication Scheme). If your station has an **ObixNetwork** that operates as an oBIX server, note that it is not possible for the N4 migration tool to determine which station users were used for oBIX authentication.

Since the HTTP Basic Authentication Scheme is assigned on a per-user basis, the migration tool updates the authentication by completing the following steps:

1. Adds an HTTP Basic Authentication Scheme from the baja Palette to Services -> Authentication Service -> Authentication Schemes
2. Creates a new user (the default name is "obix"). If a User with the name "obix" already exists, the Migration Tool will try "obix1", "obix2", etc. until a free username is found.
3. Sets the Authentication Scheme Name of the User created in Step 2 to the HTTP Basic Authentication Scheme added in step 1.

**NOTE:** The password assigned to this user is the default password. It cannot be used by oBIX clients until you manually assign a password.

## oBIX authentication configuration

After migration, you **MUST** perform the following additional configuration to allow OBIX clients the proper access to the station's oBIX server. These requirements apply to the default "obix" User created during migration or any other User that you are using to allow oBIX clients access.

- Step 1 Open Workbench, if not already open.
- Step 2 In the Nav tree of the migrated oBIX server station, expand **My File System** and navigate to the station folder.  
Typically, such stations are under your **User Home**, under the stations folder.
- Step 3 Expand the station folder, and expand the config.bog file under it.
- Step 4 Expand **Services > UserService** and double-click on the newly created “obix” user to open the **Edit User** dialog box. The user that the migration tool created is a user name beginning with the letters “obix”, such as: “obix”, “obix1”, “obix2”, etc.
- Step 5 In the **Edit User** dialog box, make the following changes:
- change the user password from the existing default value to a password that complies with the Niagara 4 password configuration requirements.
  - assign a Role to “obix” user that allows access to the necessary station components that you desire to be accessible to oBIX clients.
  - verify that the user permissions include read access to the ObixNetwork in order to provide access to the ObixNetwork in order to provide access to the oBIX Lobby of their server.
- Step 6 Click the **OK** button to close the dialog box and save the station changes (e.g. in the Nav tree, right-click **config.bog** and click **Save**).

### ***Tips for Configuring oBIX Authentication***

The following list includes tips and considerations for configuring oBIX stations after migration.

- **Assign Role from a previous user**  
During migration, the Niagara Role is created for each AX User in the station. If the AX station was being accessed by oBIX clients, you can probably pick the User that clients were using, and simply select the Role with that name as a starting point for N4 oBIX client access.
- **Separate Users for each Client**  
Consider using a separate User for each oBIX client (or client type) that accesses the station's oBIX server. This is another way to increase the security of your installation by encapsulating access and giving each user the minimum access necessary to accomplish the needed function.

### **Preliminary checkout of migrated stations**

Prior to installing stations, we recommend that you use Workbench to open each of the migrated stations offline, that is in the stations folder under your Workbench **User Home**, and check it out carefully. If necessary, make and save any changes.

As for migrated JACE stations, if you have an extra, available JACE controller (of the same model type) that has been converted, you can install a migrated station and observe startup behavior. However, expect many errors from driver-sourced items—as you would for any unit disconnected from device networks.

## **Upgrade/convert platforms and install stations**

Once you have stations migrated, you can upgrade/convert platforms to N4.0 and install the migrated stations. Typically you upgrade a Supervisor before upgrading any of its controllers.

Often, you use the same PC to run the migration tool, on the Supervisorstation archives, as well as the station archives of all controllers being migrated. When this is the case, you usually *do not choose* to “Install and start the (N4.0) platform daemon” when first installing the Niagara 4 software. This lets the AX-3.8 platform daemon continue to host the Supervisor station while you use the migration tool. It also lets you become familiar with Workbench, and yet still have Workbench available for interim tasks.

**NOTE:** When installing Niagara 4 software on the Supervisor PC, be sure to select the option “This instance of Niagara 4 will be used as an installation tool”. Refer to the Niagara 4 Installation Guide for details.

Alternatively, you may have used a *different* PC to run the migration tool, and perhaps even to (eventually) use as the new Supervisor host for the job.

As different combinations are possible in a transition such as this, use the procedures and steps provided to serve as a general guide.

## Copying the Supervisor station

The first step to preparing the Supervisor station is to copy the migrated station.

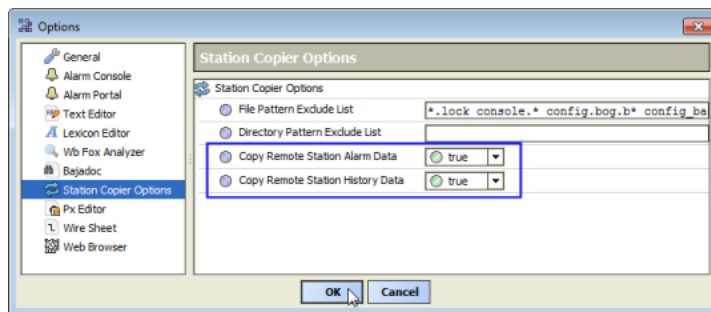
**Prerequisites:** You have secured the required licenses and the station databases are ready to install.

- Step 1** After installing Niagara 4 on the Supervisor PC and starting Workbench, open a platform connection to the AX-3.8 Supervisor station and stop the station.
- Step 2** At the N4.0 Supervisor PC (with access to N4.0-migrated station folders), install and start the N4.0 platform daemon.

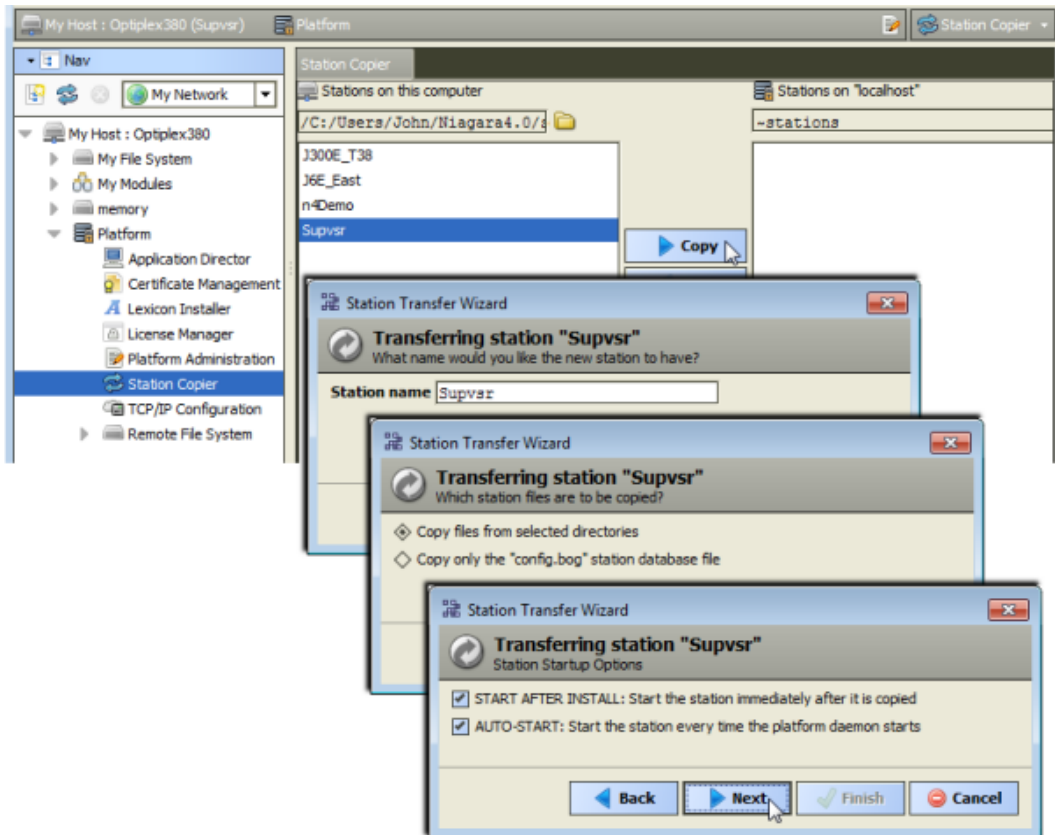
For example, from the **Start** menu, select **All Programs > Niagara 4 4.0.3 → Install Platform Daemon**

In some cases, this daemon may already be running; however re-installing causes no issues.

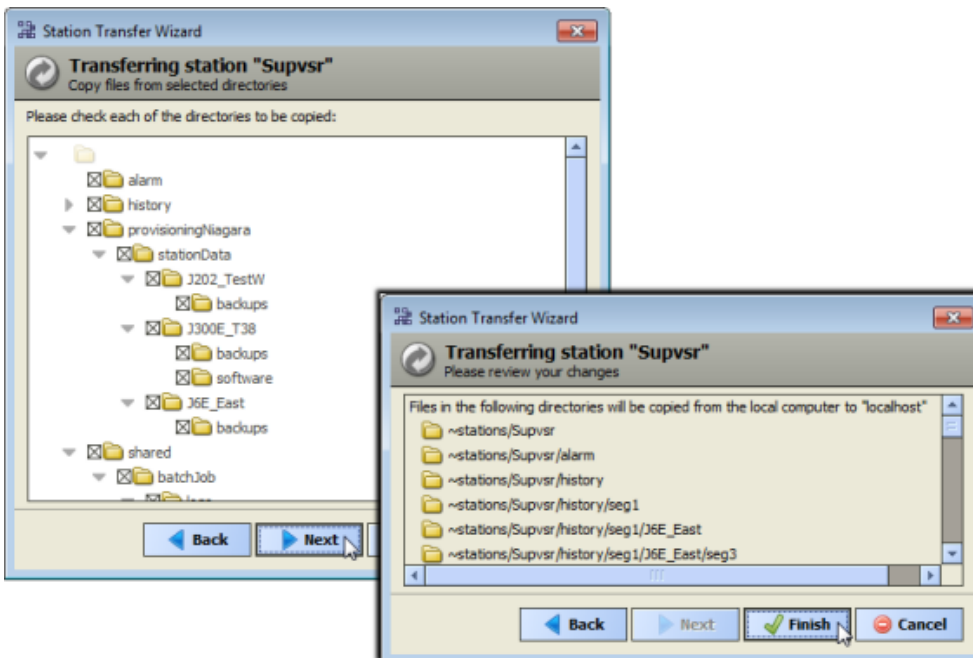
- Step 3** Start Workbench (if not already started) and click **Tools→Options→ Station Copier Options**. The Options window opens.



- Step 4** Set **Copy Remote Station Alarm Data** and **Copy Remote Station History Data** to `true`, and click **OK**
- Step 5** Open a local platform connection (in the Nav tree, right-click **My Host**, and choose **Open Platform**).
- Step 6** After platform login, go to the **Station Copier** platform view.
- Ready-to-install migrated stations are on the left side, in your Workbench User Home, and there is *no station* installed on the right side, in the daemon user home (localhost). If your migrated station folders are not on the left side, copy them into your User Home. For example in: `C:\Users\user-Name\Niagara4.x\<brand>\stations`
- Step 7** Select the migrated Supervisor station, and copy (install) to the daemon user home.



Step 8 To transfer in this station copy, choose to **Copy files from selected directories**, and **START AFTER INSTALL** . . . and **AUTO-START** . . . and click **Next**. As shown below, select *all station folders*



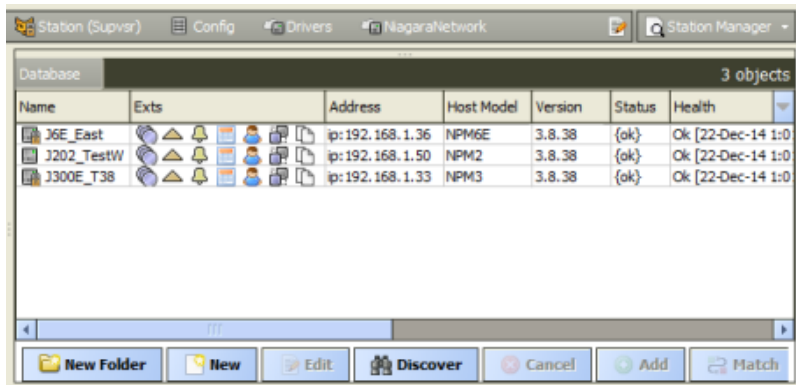
Step 9 Select all station folders to be transferred and click **Next→Finish**.

## Performing station cleanup

After copying the Supervisor take a moment to confirm that the copy was successful and make any needed changes to properties.

When the station is copied, open the **Application Director** and observe startup messages. Then open a local station (Fox or Foxs) connection to the Supervisor when it has started, and begin preliminary checkout.

Figure 16 Network Manager view



The figure above shows N4.0 Supervisor's **NiagaraNetwork** shortly after migration.

Stations that represent JACE controllers in the Supervisor's **NiagaraNetwork** should be communicating, where all may still be at AX-3.8 (yet to be converted). For any that must remain at AX-3.8 (JACE-2s for example), review, and if necessary, adjust client connection properties.

Save any changes make before upgrading your JACE controllers.

## Controller conversion

Typically, after upgrading a Supervisor, you convert JACE controllers to N4.0—or at least you convert all those for which you *successfully migrated a station*. During the N4 commissioning of each JACE, you install this station as one of the steps in the Commissioning Wizard.

### CAUTION:

You must migrate the AX station from the JACE and confirm that the migration was successful first (all Programs report {ok}, for example), *before installing* the .dist file.

### Converting a controller

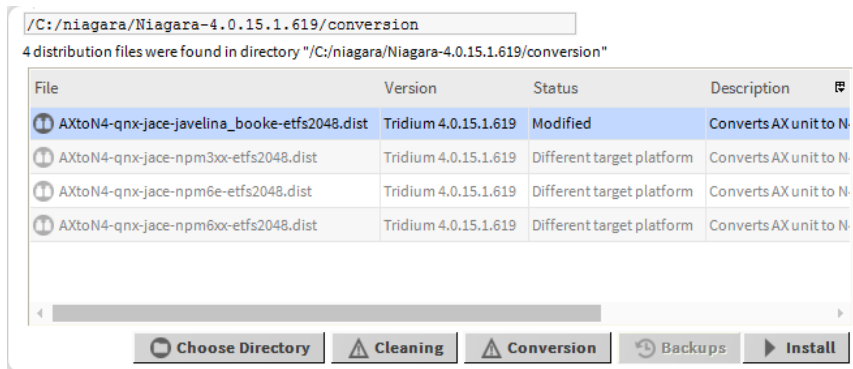
Perform the following procedure for each controller for which you have secured N4.0 license, and have successfully migrated its station database.

#### Prerequisites:

Workbench is open, you have used it to check the migrated station for this controller, and confirmed that the migration was successful.

**Step 1** Open a platform connection to the controller to be converted, and access the **Distribution File Installer**.

The list of distribution files opens.



**NOTE:** N4 may display the `cleanDist` or other files for other controllers, but you can select only the file that is appropriate for your controller. This file is only for a unit already converted to Niagara 4. If you do not see the appropriate `*.dist` file, verify that you are in the conversion folder. If necessary, use the buttons at the bottom of the view to navigate and browse for the file.

Point the installer to the `!sw/N4buildNumber` folder, for example: `!/conversion/4.0.15.1.619`.

Only *one* of several listed should be selectable. This is an example of the file for converting a controller:

`aAXtoN4-qnx-jace-npm6e-etfs2048.dist`

**Step 2** Select the appropriate `.dist` file and click the **Install** button.

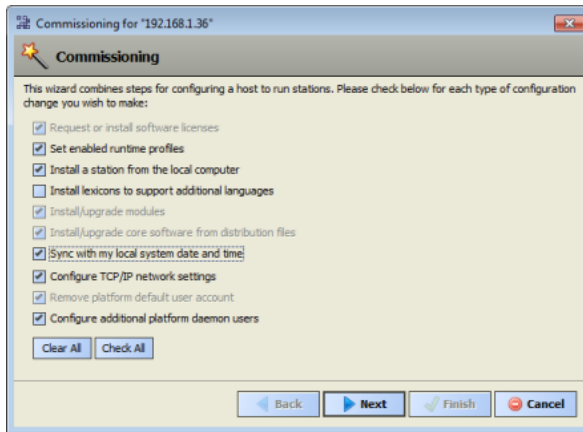
**NOTE:** Installation clears *all data* in the controller, including AX licenses and certificates, environment and properties files, SSL certificates and key files, along with all station data and NiagaraAX software. The controller's IP configuration is retained. You must use the default platform credentials to regain access.

**Step 3** After this `.dist` file installs and the controller reboots, re-open a platform connection (port 3011) using the *factory default* credentials.

**Step 4** If you previously exported SSL certificate stores from this controller, access the platform **Certificate Manager** view, and do the following:

- On the **User Trust Store** tab, click **Import**, and navigate to select the previously saved public key certificate (typically common among all platforms at the job).
- On the **User Key Store** tab, click **Import**, and navigate to select the previously saved private key certificate unique to this platform.
- Access the platform **Platform Administration** view, click the **Change SSL Settings** button, and select the new server certificate you just imported.
- Run the platform **Commissioning Wizard** (right-click the **Platform** node, and select **Commissioning Wizard**).

In this initial commissioning of the controller, you typically use *all default step selections*. This includes most steps except **Install lexicons** (but if you use text-based lexicons, select this too).



In most cases you select to:

- Install the licenses from the licensing server (unless you already have these as files).
- Use runtime profiles RUNTIME and UX, or else RUNTIME, UX, and WB.
- Install the specific station that you migrated for this *controller*, choosing to:

**Copy files from selected directories.**

**NOTE:**

You typically *select all directories* shown in the migrated station, including the alarm and history subfolder (to migrate prior alarms and histories). Apart from the migration, this is an unusual practice. If you are installing the same station in different/multiple platforms, be sure to deselect (clear) the alarm and history subfolders.

- Install all pre-selected software modules required for this station.
- Install all listed core software distribution files.
- Review, and if necessary change, the controller's TCP/IP configuration.
- You must add at least *one new* platform admin user in the "Remove platform default user account" step (initial **Platform Daemon Authentication** dialog). This *replaces* the factory-default platform user. Note that in N4, platform credentials require a stronger password than in AX. The password must be at least 8 characters, with at least 1 digit (numeral). If the password does not meet this requirement, an error dialog prompts you to create a valid one.

Make note of these platform credentials; you should use a login as such a platform user upon next access.

**NOTE:**

For this platform session, Workbench remembers the first platform admin user you created to replace the factory default platform user. This simplifies re-connection after the controller reboots.

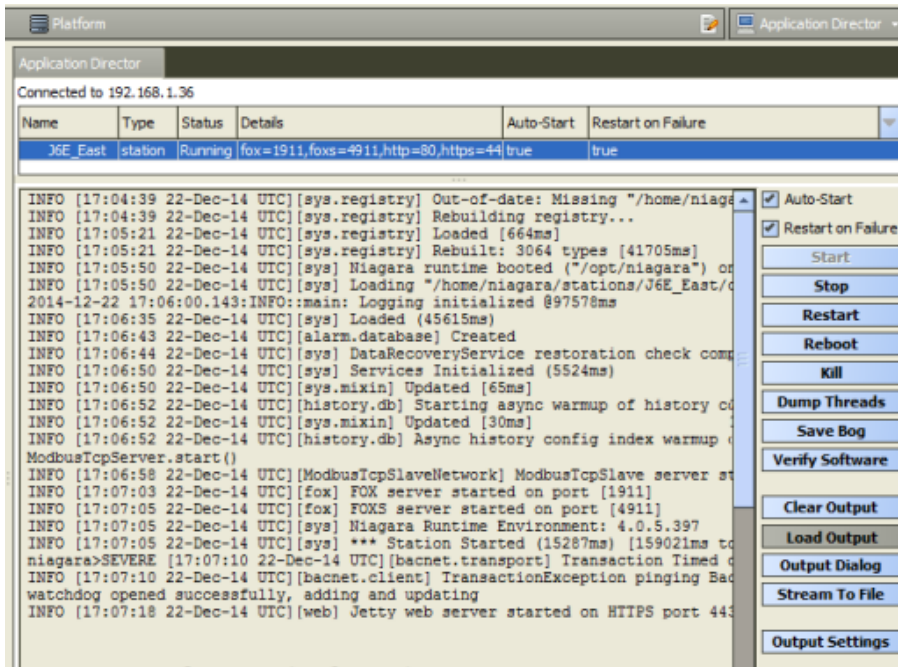
For related details, see the JACE Niagara 4 Install and Startup Guide. Example screen captures of a few of these **Commissioning Wizard** steps are shown in the [Controller conversion examples, page 57](#)

- Step 5 Review and finish the commissioning wizard, to install all selected items and reboot the controller. After several minutes, the conversion completes, and platform access should be possible.

**CAUTION:** Do not remove power from the controller during this reboot, which may take up to 7 or more minutes to complete. Removing power could easily cause the unit to become *unrecoverable*. If desired (and convenient), you can use a serial shell connection to the controller to monitor progress as files are installed, the platform is rebooted, and the unit is prepared.

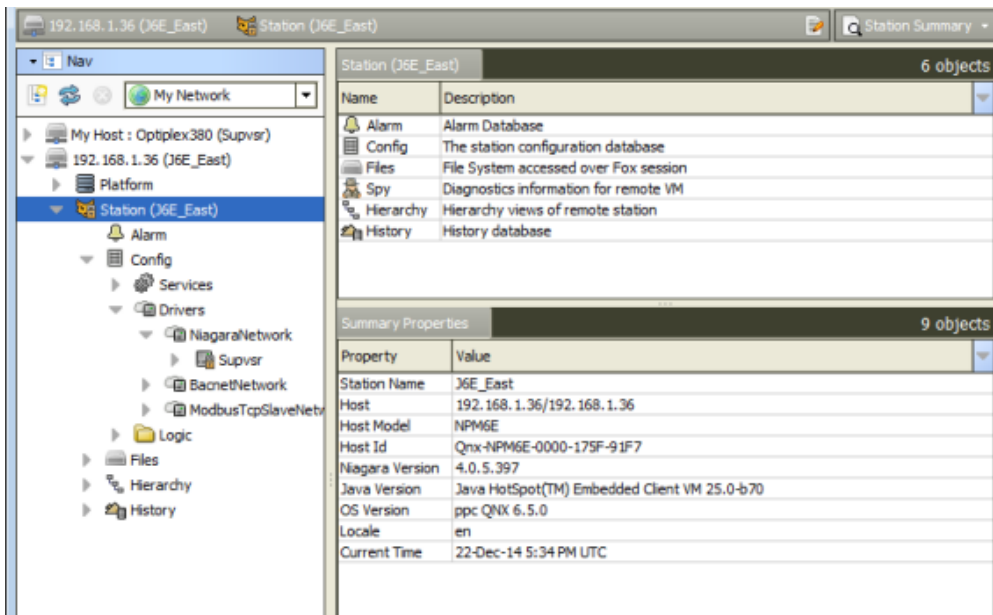


- Step 6** Re-open a platform connection to the converted controller, using a *new platform account* you entered in the wizard. Go to the **Application Director** and view the station standard output.



Again, there may be warnings and messages, but its station status should change to "running".

- Step 7** In Workbench, open a station connection (Fox or Foxs) to the converted controller, typically using the admin (superuser) login. Verify the station opens.



- Step 8** For each remainin controller to be converted, repeat the above steps

When done with this, all converted controllers should be running stations as N4.0 platforms, as well as the Supervisor station.



## Controller conversion examples

Following, are example Commissioning Wizard windows when converting JACE controller to Niagara 4.

### Example conversion steps

Figure 17 Example "Set enable runtime profiles" step

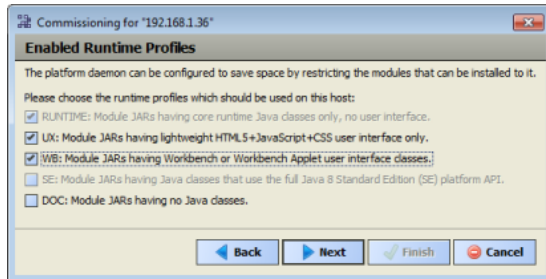
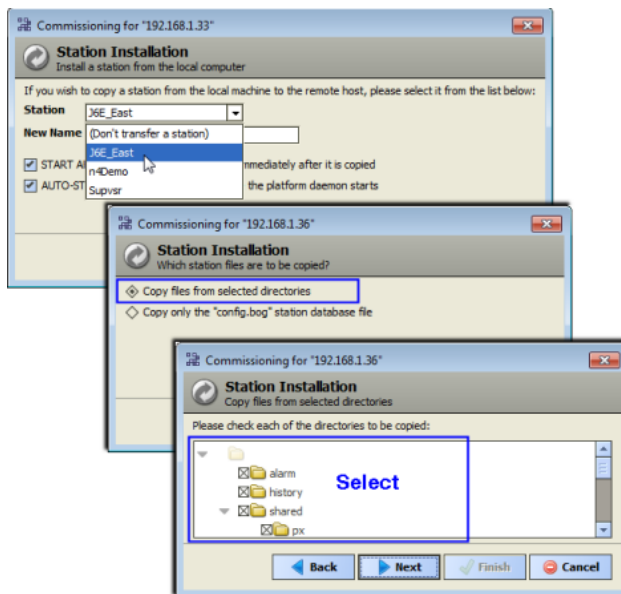
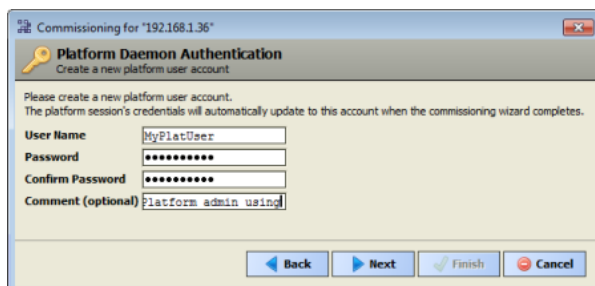


Figure 18 Example "Install station" step (pick migrated station)



As shown above, by default all items are selected. If necessary you can de-select any items not wanted.

Figure 19 Example platform daemon authentication step (to replace factory platform user)



If this controller was previously provisioned by the AX Supervisor, you may wish to have at least one platform admin user with the *prior* user name, and possibly prior password (if it was "strong" before). Otherwise, you must update the platform connection Credentials property for this station back in the Supervisor station's NiagaraNetwork.

An even better practice might be to add another platform user in the JACE that *no person uses* to make platform connections, but is only referenced back in the N4 Supervisor.

## Downgrading controllers

In some cases it may be desirable or necessary to convert a controller from Niagara 4 to NiagaraAX. During the commissioning of JACE controller, all station data are deleted. This includes SSL certificates and key files. Niagara 4 stations cannot be converted to NiagaraAX stations. But, you can install a previously saved NiagaraAX station during the downgrade commissioning process as one of the steps in the Commissioning Wizard.

**NOTE:** Controller downgrade from Niagara 4 removes all data except the controller's Ethernet TCP/IP configuration. Platform credentials revert to factory defaults. The Niagara 4 license is not retained and NiagaraAX license is required. All station data is deleted.

### Downgrade procedure

Perform the following for each controller to be downgraded, and for which you have secured NiagaraAX license.

**Prerequisites:** To restore an existing station, make sure you have access to the station file, or a backup distribution file.

- Step 1 At the Supervisor, using Workbench, open a platform connection to the controller to be downgraded, then open the **Application Director** and stop any running station.
- Step 2 With the platform still selected, choose the **Distribution File Installer** from the view selector, navigate to the location of the downgrade distribution file, and click **Conversion**.
 

**NOTE:** Some non-applicable files, such as N4 `cleanDist`, `.dist` or other files may be selectable but, in this case, do not select these files. Click the **Choose Directory** button to browse to the location of the downgrade `.dist` file, for example: `N4toAX-qnx-jace-<npm-model>etfs2048-clean.dist`.
- Step 3 Select the appropriate `.dist` file and click the **Install** button.
 

**NOTE:** Installation clears *all data* in the controller, including AX licenses and certificates, environment and properties files, SSL certificates and key files, along with all station data and software. The controller's IP configuration is retained. You must use the default platform credentials to regain access.
- Step 4 After this `.dist` file installs and the controller reboots, re-open a platform connection using Workbench (port 3011) and the *factory default* credentials.
 

**NOTE:** At this point, the JACE will be at 3.8.38 version. If you need an earlier release AX version, use the `clean .dist` files in the AX-3.8 **Distribution File Installer**. This will revert the JACE back to the base-factory version.
- Step 5 Run the platform **Commissioning Wizard** (right-click the **Platform** node, and select **Commissioning Wizard**). During the commissioning process you can choose to reinstall a station, if you have one ready, perhaps from a previous backup, or you can restore from a backup as described in the next step.
 

**CAUTION:** Do not remove power from the controller during this reboot, which may take up to 7 or more minutes. Removing power could cause the unit to become *unrecoverable*. If desired (and convenient), you can use a serial shell connection to the controller to monitor progress as files are installed, the platform is rebooted, and the unit is prepared.

For more details on commissioning the AX-3.8 controller, see the *JACE Niagara 4 Install and Start-up Guide*.
- Step 6 If you did not restore a station with the previous commissioning step, make sure you have a backup `.dist` file and a platform connection to the rebooted AX-3.8 controller. Select the **Distribution File Installer** view and click on the **Backups** button or **Choose Directory** button to navigate to the appropriate `dist` file location.

**Step 7** Select the `.dist` file and click the **Install** button. Follow the prompts in the **Distribution File Installer** to complete the installation.



# Chapter 3 System verification

## Topics covered in this chapter

- ◆ Non-default environment files
- ◆ Verify station-to-station communications
- ◆ Provisioning notes
- ◆ Station User notes in migrated stations

Following the migration and initial upgrade of a system from AX-3.8, there may be additional considerations and tasks that you need to verify operation.

The following sections include related topics.

## Non-default environment files

The migration tool *does not* migrate all parts of the station backup `.dist` file. For any AX-3.8 host where you made changes in properties files or xml configuration files, these settings may need to be re-applied to equivalent files in the Niagara 4 host.

Some examples of files that may have been modified include:

- `system.properties`
- `nre.properties`
- `daemon.properties`
- `units.xml`
- `unitConversion.xml`
- `facetKeys.properties`

In most cases the station should at least run successfully, and these settings can be re-applied once the station is running under Niagara 4. It may not even be necessary to make the same changes, so you should evaluate once you have the station running in Niagara 4.

**NOTE:** Do not copy entire files from the NiagaraAX platform to the Niagara 4 platform, but instead only those values that were modified from defaults in the equivalent NiagaraAX file(s).

## Verify station-to-station communications

Ideally, station-to-station communications between the platforms converted to N4.0 and all others resume after the upgrade. That is, communications between the Supervisor and controller stations, via the **NiagaraNetwork**. Supervisor communications between any JACE stations which remain at AX-3.8 should also resume. (Note this assumes all station names remained unchanged.)

However, in some cases you may need to take additional steps to restore communications, working in the N4.0 Supervisor stations and/or controller stations (N4.0 JACEs, and if applicable, AX-3.8 too).

**NOTE:** If configuration of any AX-3.8 JACE station is required, say to edit “client connection” properties of the NiagaraStation that represents the N4.0 Supervisor, need to use Workbench for this.

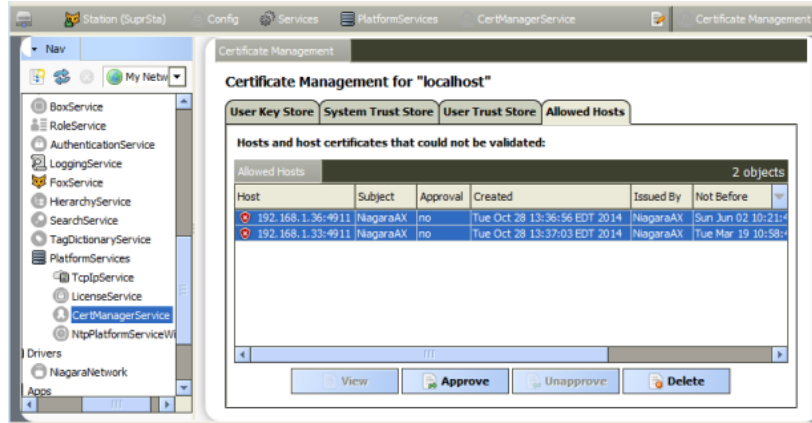
Some variation of the following sequence may be required:

1. In Workbench, re-open the Supervisor station and go to the **Station Manager** view of its **NiagaraNetwork**.

If new JACE controllers were added (not migrated) there will not be an existing station child for them—you need to select and add them.

- For each NiagaraStation in the Supervisor station's **NiagaraNetwork**, verify that communications report {ok}. The status of all stations in the network should be {ok}.

In cases where secure communication (Foxs) is being used with the default self-signed certificates, it may be necessary to go to the Supervisor's **CertManagerService** platform service, and perform other actions.



The figure above shows allowed hosts exceptions for migrated controllers that need approval. This may not be necessary, if previously-exported TLS/SSL certificates were imported before commissioning.

- In a station connection to each JACE controller, go to the **Station Manager** view of its **NiagaraNetwork**, and verify communications to the Supervisor are {ok}.

Again, if Foxs (TLS/SSL) is being used by a Hotspot JACE station back to the Supervisor (and possibly other JACE stations) you may need to go to the JACE station's **CertManagerService** platform service, and perform other actions.

- While working in remote JACE stations, after verifying **NiagaraNetwork** communications back to the Supervisor are {ok}, verify other "inter-network" configuration is valid. For example, verify the correct **NiagaraStation** component (representing the Supervisor) is referenced in the appropriate **StationRecipient** component, under the station's **AlarmService**. Typically, this is necessary only if station names were changed when migrating.

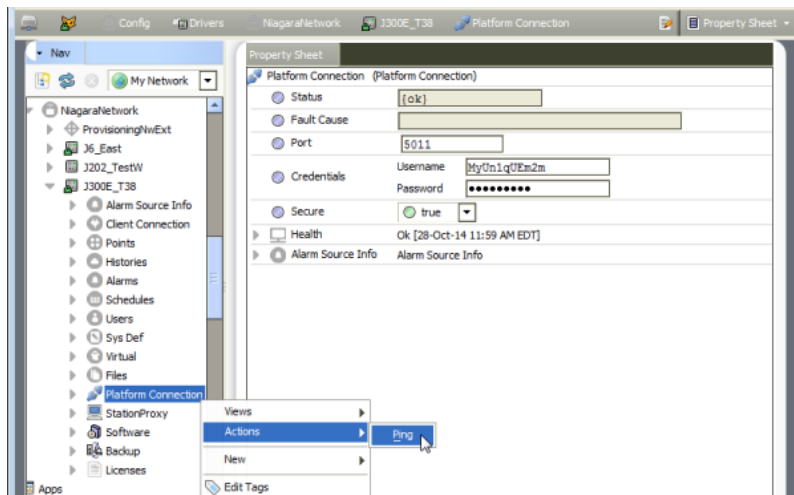
## Provisioning notes

For any Supervisor migrated to N4.0 that was configured for provisioning stations in its **NiagaraNetwork**, that is, using the `provisioningNiagara` components (for example, **ProvisioningNwExt**, also **BatchJobService**), there may be related post-migration measures needed.

## Verify Supervisor to controller platform daemon communications

You need to verify that communications from the Supervisor to the platform daemon of each controller are {ok}.

Expand the Supervisor's **NiagaraNetwork**, and issuing a ping from the **PlatformConnection** device extension of each child **NiagaraStation**.



The figure above shows successful communications to the JACE platform daemon, using platformssl. However, you may first need to edit the **Credentials** property to match a new strong password for the platform admin account in an migrated controller. And/or, perhaps (again) access the Supervisor's **CertManagerService** platform service, and perform other actions.

This station-to-platform provisioning communications is one-way only, from the Supervisor to each controller. Therefore, no reciprocal configuration in controller stations is needed.

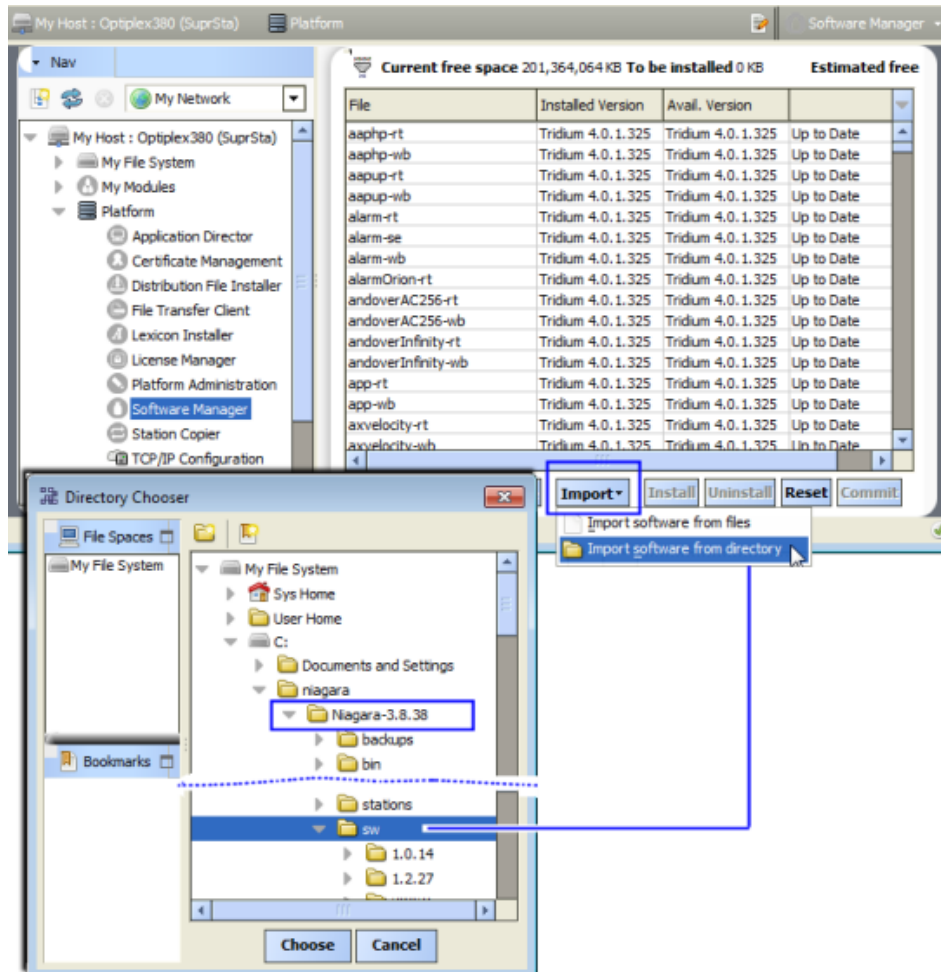
## Provisioning considerations when JACE controllers remain

Sometimes one or more JACE controllers may need to remain running AX-3.8, yet continue to be in the migrated Supervisor's **NiagaraNetwork**. This is supported by the N4.0 Supervisor, including *many* provisioning operations. For example, the backup of AX-3.8 stations and installation of AX-3.8 software.

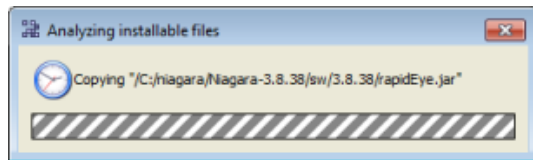
For proper support, you should *import* the software database of the former AX-3.8 Supervisor into the software database of the N4.0 Supervisor. This copies over all the versioned NiagaraAX software modules and .dist files to the new Supervisor, and makes them available for provisioning of the older platforms.

To do this when the N4.0 Supervisor is installed on the same PC as the former AX-3.8 Supervisor:

1. Use Workbench to open a *platform connection* to the N4.0 Supervisor, then access the **Software Manager** view.
2. Click the **Import** button at the bottom, and then `Import software from directory`.



- As shown above, in the **Directory Chooser** popup, navigate to the AX-3.8 Supervisor's installation folder, then expand to find its `sw` subfolder. Select it and click **Choose**.



Progress is displayed in a popup dialog similar to the one above, while software files are analyzed for versions and then copied into appropriate subfolders in the N4.0 Supervisor's software database. When finished copying, the normal **Software Manager** view opens.

If the former AX-3.8 Supervisor is on a *different* PC than the N4.0 Supervisor, you perform the same procedure. However, first copy the entire software database (! \sw folder) from the AX-3.8 Supervisor to a location accessible from the N4.0 Supervisor, such as on a USB flash drive, etc. Then navigate to that location from the **Software Manager** while platform-connected to the N4.0 Supervisor.

## Station User notes in migrated stations

A number of Niagara 4 changes were made affecting station users, meaning User components that are children of a station's **UserService**.



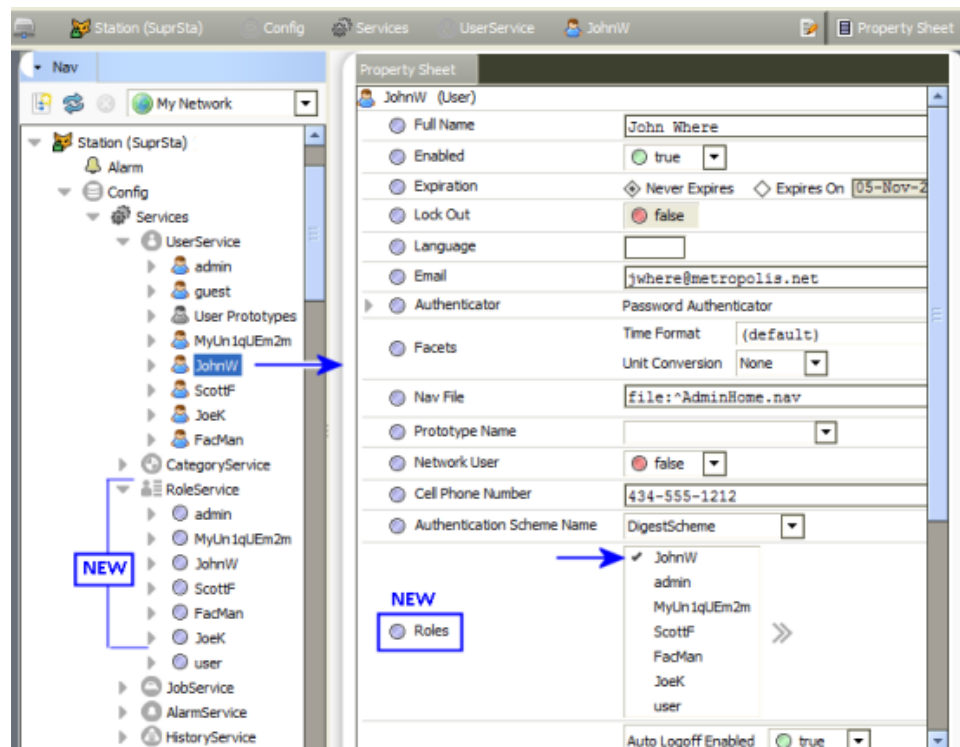
## Permissions moved to Roles

The permissions map that every User had (Permissions property) was *removed*. The permissions map identifies what operator-level and admin-level privileges are in place for different *Category* components in the station.

The Permissions property was *relocated* to **Role** components (*new* in Niagara 4), which are children of a *new* **RoleService** in the station. Instead of a User being assigned permissions directly, now you assign each user to one or more *Roles*. Permissions of those roles are “OR’ed” together to specify what privileges a user has on the categories in the station.

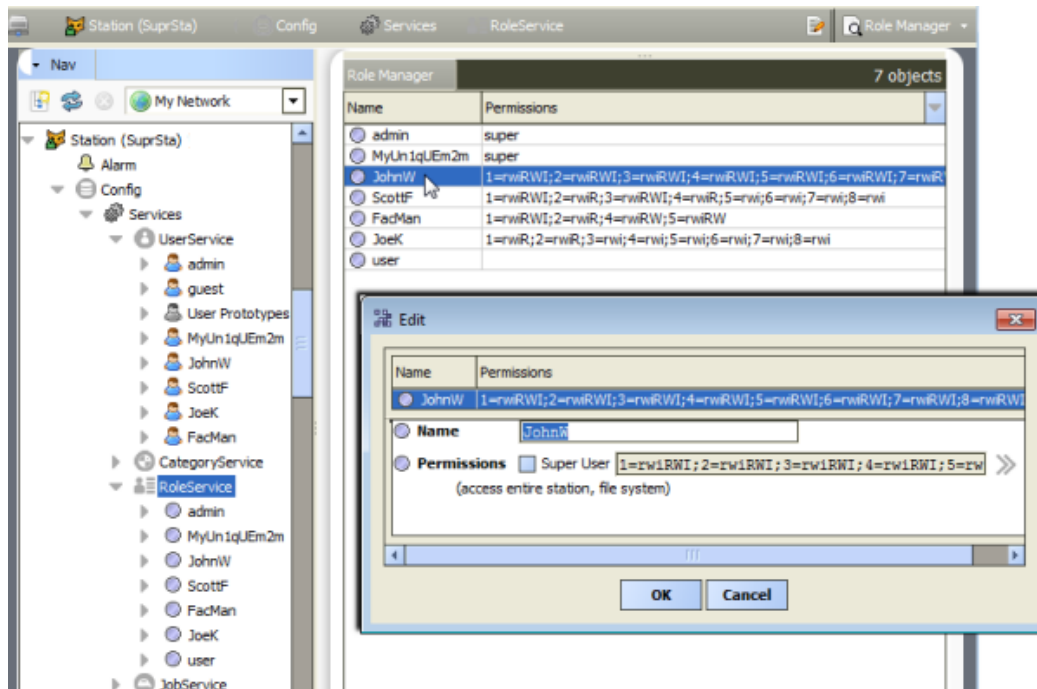
In order to migrate Users from AX to N4.0, while preserving their existing category permissions, note an N4 migration results in a *separate Role created for each User—and named identically to that User*.

Figure 20 Station migrated to N4.0 has default “one-to-one” mapping of new Roles to existing Users



This one-to-one mapping of created roles to users is shown above, where user JohnW has (by default), only *one* role assigned: also named JohnW. (Note additional roles *could* be assigned, but are not here.) Effectively, nothing changed here: the permissions map that used to be in user JohnW’s permissions property is now in the “same named” **Role** component.

Figure 21 Permissions map of User relocated to Role created with identical name



As shown above, you can see this in the popup **Edit** window for each Role (in the **Role Manager** view on the **RoleService**). The role now has the permissions map.

In summary, to make better use of roles, you should consider this a workaround effect of migration. For example, you could create more duty specific roles and/or rename or delete roles, later reassigning to users in various combinations. When adding or editing users, this can simplify how permissions are assigned.

The **Role Manager** lets you do all these things, except the assignment of one or more roles to users. That you do from editing (or adding new) users in the **User Manager**, or from User property sheets.

## Authentication is user-specific

When looking at a **User** in Niagara 4 station, notice that the **Password** property is now inside a new **Authenticator** container, along with **Password Config** properties. In addition, each User has a specified **Authentication Scheme Name**, where the default is typically **DigestScheme**.

This is part of a new authentication architecture in Niagara 4. Along with a new (and required) **AuthenticationService** and child **AuthenticationScheme** components, station security is improved, providing finer control. For the migration of existing station users, typically nothing remains to be adjusted. However, when creating new users, this architecture may provide added flexibility.

For related details on authentication changes, refer to the Niagara Station Security Guide.

# Chapter 4 Migrating Niagara Enterprise Security stations

## Topics covered in this chapter

- ◆ Upgrading devDriver-based video drivers
- ◆ Mapping Supervisor cameras to AX controllers before migration to N4
- ◆ Preparing the BackupService
- ◆ Backing up by creating a distribution file
- ◆ Migrating each station
- ◆ Copying the migrated files
- ◆ Setting up the Supervisor's database password
- ◆ Creating and updating the HSQL database password
- ◆ Configuring network device passwords
- ◆ Deleting the old certificates
- ◆ Reconnecting the Supervisor and remote stations
- ◆ Restoring the BackupService schedules

Niagara Enterprise Security stations are Niagara stations that have some additional unique migration requirements and options. The following topics describe the specific steps required to migrate your NiagaraAX-3.8 security Supervisor and controller stations to Niagara 4.8 (and later) security stations. This topic provides an overview of the process.

To reduce downtime, migrate the Supervisor station first and then the individual security stations.

A typical Supervisor station includes persons, badges, access rights, schedules, threat level groups, intrusion PIN, intrusion zones, NiagaraIntegration ID, tenants, new users, new roles, new categories, a PhotoIDNetwork, and ObixNetwork, PxViews, additional personnel information, an Ldap network, alarm class, custom Wiegand format, and keypad configuration.

The following list summarizes the aspects of the AX security system that need special migration attention:

- **Passphrase:** Be sure to have the station passphrase available before starting the migration process. Depending on the migration scenario you are using, you may need to re-enter an existing passphrase or create a new passphrase during the migration process. Refer to "System Passphrase" and related topics in the *Niagara Platform Guide* for more details about passphrase usage.
- **devDriver based video drivers:** Niagara 4 does not support RapidEye and Dedicated Micros legacy devices. During migration, the migrator deletes devDriver-based devices, including these two. If your installation includes one or more of these devices, please upgrade to the supported devices: Axis, Milestone and MaxPro video drivers.  
  
If your installation uses the devDrivers for AxisvideoNetwork and Milestone, a procedure in this chapter documents how to use the **Video Driver Upgrade tool** to upgrade these drivers to nVideo-based version of the drivers.
- **Remote Video Camera mapping:** As part of AX to N4 compatibility restrictions, Supervisor cameras cannot be discovered under the NiagaraNetwork from an AX controller. So, to migrate cameras to the new Supervisor station, map them in a Niagara Enterprise Security 2.3 JACE before doing the station migration. Then, during migration, the new station retains that mapping without additional changes after migration.
- **Backup:** Before migration, you will make a backup of the Supervisor station and all subordinate stations. By default, the BackupService does not include alarms and histories. To retain these database records, you must specifically include alarms and histories in the backup.
- **Backup schedules:** Before migration you must use the web UI to unassign any schedules in the BackupService and re-assign them after completing the migration.

- **Photo ID station AsureID Legacy Device:** If you use AsureID to create photo ID badges, Niagara 4.8 (and later) does not support the AsureID Legacy Device. Before migrating, add the newer AsureID Client Device to your Photo ID network.

Refer to the “Manually adding a Photo ID device (not legacy)” topic in the *Niagara Enterprise Security Installation and Maintenance Guide* for guidance on how to configure the newer Asure ID Client Device.

- **Supervisor database support:** Niagara 4.8 (and later) supports MySQL 5.6 (and later) and SQL Server 2008 (and later). These are the minimum requirements for the Supervisor database.

**NOTE:** There is no special procedure for preparing the Supervisor database. If your database is older than the supported versions, contact the database supplier for software upgrade procedures.

- **Remote station database password:** The migrator clears the Hsql password in each remote station. After migration it sets up the default password to access the Hsql database. While the database will work with the default password, you should change it to a more secure credential after migration.
- **Roles:** Roles are handled differently in Niagara 4. The migrator removes all AX security roles from the UserService and moves them to the Niagara 4 Role Service.
- **Custom modules:** If your installation includes custom modules made using the ProgramModule feature, you will need to refactor them before migrating the Supervisor and subordinate stations. Refer to “Migrating modules made with the ProgramModule component” in this guide.

## Upgrading devDriver-based video drivers

If you are using one or more devDriver-based video drivers, a conversion tool is available to upgrade these drivers in each controller station to the newer nVideo-based drivers. You must upgrade these drivers before you migrate each controller station.

**Prerequisites:** Your laptop or PC is connected to the same network as your controller(s) and is running the NiagaraAX version of Workbench. The driver upgrade module is available.

**Step 1** From Workbench, open a connection to the desired controller station (**File→Station→Open Station**) and enter credentials with admin privileges.

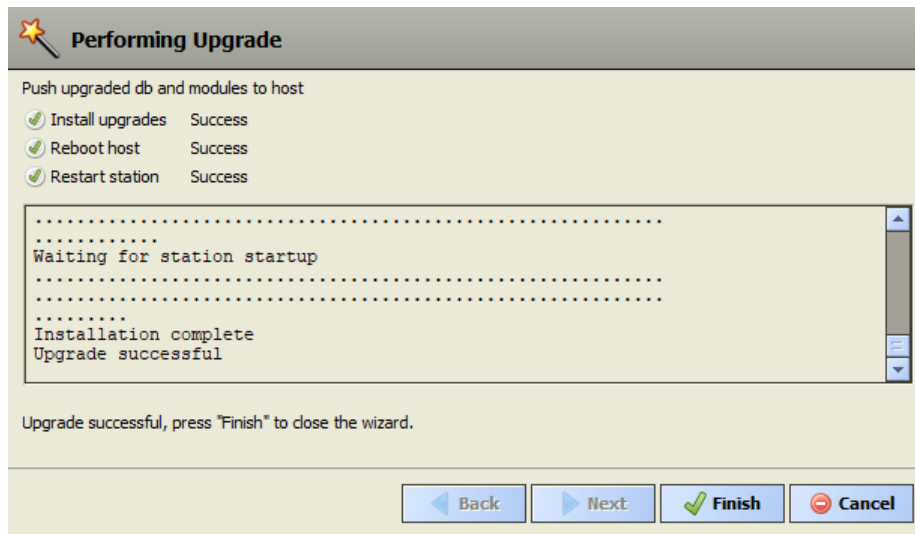
**Step 2** From the main menu, click **Tools→Driver Upgrade Tool**.

The **Driver Upgrade Tool** window opens.

**Step 3** Enter the host address, platform and station addresses and click **Next**.

The wizard reads the current station and scans its .bog (station) file. If a driver can be upgraded, the wizard changes the .bog file and downloads any dependent modules. Be sure that you have the required modules or an upgrade is not possible.

When it successfully completes the upgrade, the wizard indicates that it was successful.

**NOTE:**

The wizard does not delete the old devDriver based video driver modules.

- Step 4 To conserve space in the controller, delete the old devDriver based modules if they are no longer needed. devDriver modules that you can delete, include the following:

- devDriver.jar
- devHttpDriver.jar
- devIpDriver.jar
- devVideoDriver.jar

**NOTE:** The devDriver.jar may be required as a dependency for other drivers. If so, you cannot delete it while that dependency exists.

- Step 5 Delete any older driver modules, such as those for Closed-Circuit TV (CCTV) equipment associated with the older drivers.

## Mapping Supervisor cameras to AX controllers before migration to N4

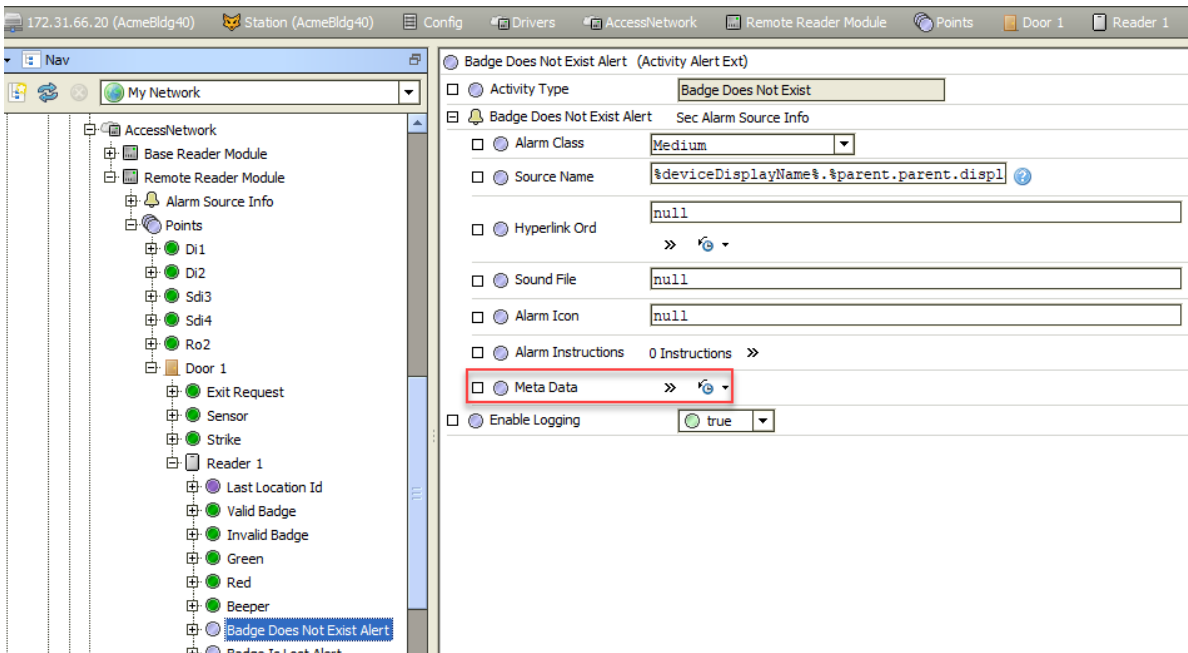
As part of AX to N4 compatibility restrictions, Supervisor cameras cannot be discovered under the Niagara-Network from an AX controller. This procedure describes a way to pre-configure your station before migration in order to retain the Supervisor camera to remote controller connection after migration.

**Prerequisites:** The camera device address is available. The Supervisor IP address is known.

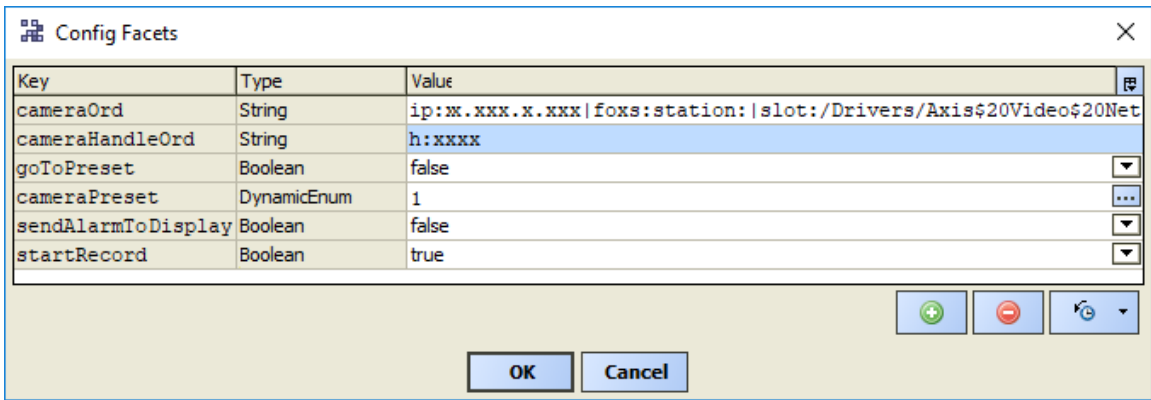
If you map the desired Supervisor camera to the remoter controller before migration (using this procedure), the system maintains the camera relationship through the migration process and functions after migration for use with readers and alarms.

- Step 1 Using the Niagara Enterprise Security 2.3 Workbench, navigate to the following location: **Config→Drivers→AccessNetwork→Remote Reader Module→Points→Door 1→Reader 1→Badge Does Not Exist Alert**

The property sheet view opens.



Step 2 To open the **ConfigFacets** window, click the facets icon (>>) next to the **Meta Data** property.



Step 3 Add facets as shown in the image above (also, refer to details in table below), where xxx.xxx.x.xxx is the IP address of the Supervisor platform and xxxx is the actual **cameraHandleOrd** for the camera you are mapping.

The following table indicates the key names, type, and values that go in the facets window.

Key	Type	Value
cameraOrd	String	ip:xxx.xxx.x.xxx foxs:station: slot:/Drivers/Axis\$20Video\$20Network
cameraHandleOrd	String	h:xxxx
goToPreset	Boolean	false
cameraPreset	dynamicEnum	1
sendAlarmToDisplay	Boolean	false
startRecording	Boolean	true

**NOTE:** The `startRecording` property works only for **Milestone** cameras but not for **Axis Video** cameras. Set the `startRecording` property to `false` for an **AxisVideoCamera**.

When this task is completed the station is ready for backup and migration as described in the tasks included with [Chapter 4 Migrating Niagara Enterprise Security stations, page 67](#) topic.

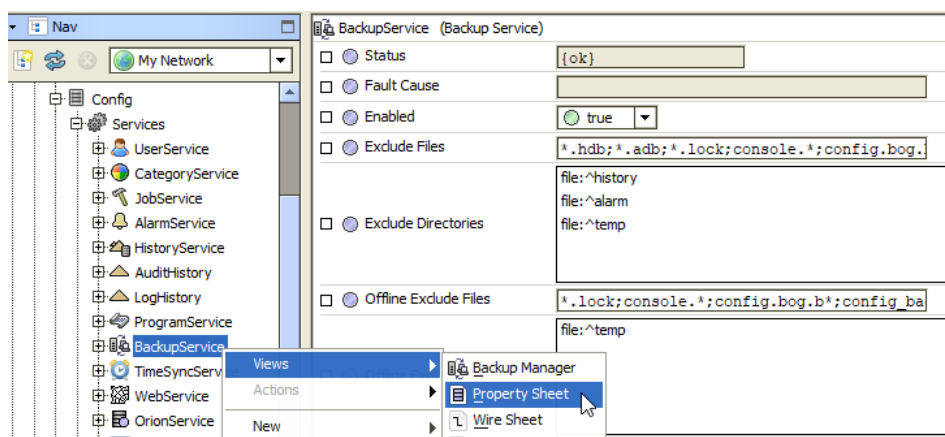
## Preparing the BackupService

By default, backups do not include alarm and history records. To preserve alarms and histories you need to edit the excluded file values.

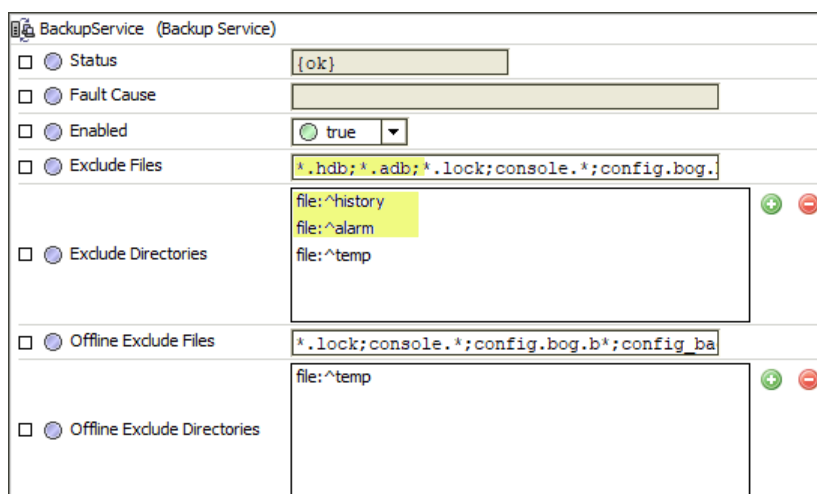
**Prerequisites:** You are logged in to your NiagaraAX Supervisor station with admin privileges.

**Step 1** Navigate to the **Config→Services** node in the Nav tree, right-click the **BackupServices** node and select **AX Property Sheet** from the popup menu.

The **BackupServices** property sheet opens.



**Step 2** In the **Exclude Files** text field, select and delete the following: `*.hdb`; and `*.adb`; using your keyboard and mouse.



This includes (not excludes) your database files.

**Step 3** For the **Exclude Directories** property, select the following files and delete them using the remove icon (⊖): `file:^history` and `file:^alarm`

This includes (not excludes) alarm and history files.

## Backing up by creating a distribution file

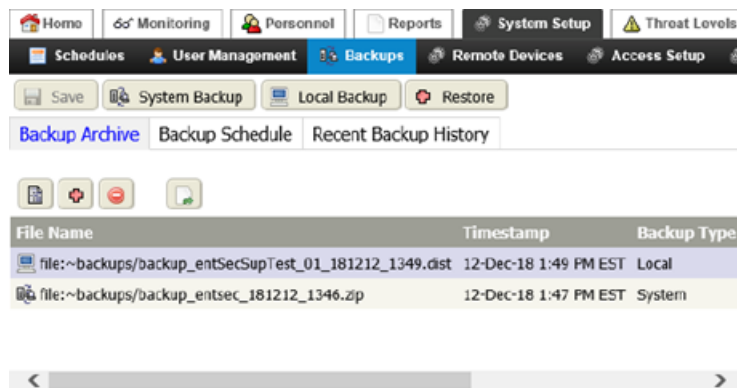
This procedure backs up a Supervisor and any subordinate stations. Creating a single distribution (.dist) file is the most complete way to back up a Supervisor station and its subordinate remote stations. The backup file includes all station data and module-dependency information.

**Prerequisites:** Your PC is connected to the network with any remote controller subordinate stations. You are using a browser (the web UI) to connect to the Supervisor station.

**Step 1** Open a browser and log in to the AX Supervisor station that you want to back up.

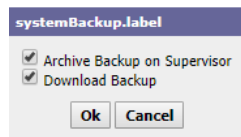
**Step 2** From the Home view, click **System Setup** → **Backups**.

The **Backups** view opens.



**Step 3** Click the **System Backup** button.

The **System Backup** window opens with two option boxes selected.



Selecting the first option (check box) enables a backup of the Supervisor station and all its subordinate stations. The second option (check box), when selected, automatically downloads the backup to your local **Downloads** folder.

**Step 4** To continue, click **Ok**.

The **Job** window displays a progress bar while the backup job runs. When the job finishes, another **Local Backup** window opens with a “Show Details” link and a **Download** button.



**Step 5** To display the history of this backup job, click the **Show Details** link.

**Step 6** To save the backup \*.dist file to a designated location, click the **Download** button. In this case, the browser saves the file to the temporary folder and prompts you to open or save the file.

**NOTE:** You must save the file within five minutes of creating it or it is not available.

**Step 7** Give the file a short name that identifies the Supervisor and subordinate stations, and save the file to a location other than the System Home or User Home.



- Step 8** Finally, make a note of the date and where you saved the downloaded file for reference when migrating the file.

## Migrating each station

The migrator is a command line utility. Using the backup .dist file, it creates the Niagara 4 Supervisor and subordinate station folders. Then, using Workbench, you open a platform connection to each new platform and install each new station using the Station Copier.

**Prerequisites:** Niagara 4 is installed on your PC. You know the name of the .dist file and where it is located. Zip files must be “unzipped” to expose the “\*.dist” file for the migrator to process.

- Step 1** Open a standalone Console window using the shortcut from the Windows Start menu.

**NOTE:** Do not use the Workbench embedded Console. It cannot accept the required keyboard inputs during the migration process.

- Step 2** Change directories to the location of the backup .dist file.

**NOTE:** If you change directories to the location of the backup .dist file you do not need to specify the path to this file.

- Step 3** Enter: `n4mig distributionfilename.dist`, where `distributionfilename.dist` is the name of the backup .dist file you created.

If the current directory does not contain the .dist file, include the correct file path in the command line to precede the .dist file name. For example: `c:\path\distributionfilename.dist`.

- Step 4** When the process pauses, respond to the prompts in the console window, as follows:

- a. Please select a migration template: 1: Controller Migration Template or 2: Supervisor Migration Template

- b. Enter the passphrase used to protect Niagara 4 BOG files.

If you know the passphrase of the system that you are targeting with the migrated station(s), enter it here. If you do not know or have access to the system passphrase, create one now and remember it. You will have to enter it when you copy the migrated station to the Niagara 4 host system. For more details about passphrase refer to the *Niagara Platform Guide* topics: “System Passphrase” and “System passphrase usage in backups and station copies”.

While the migration utility runs, it displays the log in the console window. The final message displays the source, target, and Migration Report locations for reference, as shown below:

```
Completed Migration
Source: backup_EntSec24Supervisor_190411_1415.dist
Target: C:\Users\User123\Niagara4.8\brand\stations\EntSec24Supervisor
Migration Report: C:\Users\User123\Niagara4.8\brand\stations\
backup_EntSec24Supervisor_190411_1415.dist_miglog_190411_1423.html
```

- Step 5** Make a note of these locations.

## Copying the migrated files

The migrator places all migrated files in the same location. You need to copy these files to the proper location for installation.

**Prerequisites:** The migrator ran successfully. You have installed Niagara 4 on your PC.

- Step 1** Using the operating system’s File Explorer, copy the new, migrated, stations to the `user_home/Niagara 4.x/brand/stations` directory.

 > This PC > OSDisk (C:) > Users > MyName > Niagara4.8 > Acme02 > stations

- Step 2** Launch the Workbench and make a platform connection to the Supervisor station.

Step 3 Do one of the following:

- If the PC you are using also runs the Supervisor station, use Station Copier to copy Supervisor station from the user\_home to the ProgramData directory.
- If the Supervisor station runs on a separate PC, export the tables from the My SQL or SQL Server database and copy the ProgramData directory with the exported tables to the other PC.

## Setting up the Supervisor's database password

When you upgrade a Supervisor station from AX to N4, the migrator preserves the password for the Supervisor's third-party database (MySQL, Oracle, MS SqlServer).

**Prerequisites:** The third-party database exists in the Supervisor station.

If no database exists in the Supervisor station, create the new database schema and import to the new schema the database tables that you previously exported.

Step 1 Using a browser (web UI), make a connection to the station.

Step 2 Click **System Setup**→**Miscellaneous**→**Configure Database**.

The **Configure Database** view opens to the Database Services tab.

Step 3 Select the Database tab, for example, MySQLDatabase or SqlServerDatabase.

The selected database (MySQLDatabase or SqlServerDatabase.) tab opens.

The screenshot shows the 'Configure Database' web interface. At the top is a navigation bar with tabs: Home, Monitoring, Personnel, Reports, System Setup (selected), and Threat Levels. Below this is a secondary bar with icons for Schedules, User Management, Backups, Remote Devices, Access Setup, and Intrusion. The main content area is titled 'Configure Database' and contains several buttons: Save, Manage Databases, Set Orion Database, and Restart Station. Below the buttons are two tabs: 'Database Services' and 'MySQLDatabase' (selected). The 'MySQLDatabase' tab displays a form with the following fields and values:

Status	{ok}
Enabled	true
Fault Cause	
Health	Ok [27-Jun-22 5:09 PM EDT]
Alarm Source Info	Alarm Source Info »
Host Address	ip:localhost
User Name	MySQLUserName
Password	.....
Database Name	myentsec
Port	3306
Extra Connection Properties	
Max Active Connections	30
Peak Active Connections	0
Active Connections	0

Step 4 Confirm that:

- **Enabled** is set to `true`.
- **Host Address** is localhost (for the Supervisor station).
- **User Name** is correct for the password.

- **Database Name** matches the name of the database.

**Step 5** To change the **Password** type a new, strong password and click **Save**.

The password must contain a minimum of 10 alphanumeric-only characters along with these special characters: @ # ! \$ % & + > < ] [ ] ( . The password strength check requires at least: 1 digit, 1 upper case character and 1 lower case character.

After making any database change, the framework restarts the station. After the station restarts, the database should connect using the new credentials, providing data communication from the newly-connected database.

If **Status** is {down} and **Fault Cause** reports that Workbench cannot find the connector even though a connector is in the C:\Niagara\Niagara-home\jre\lib\ext folder, make sure that the connector you are using is compatible with the MySQL software version. For example, version 5 connector will not work with MySQL version 8.

The User Name to define on the MySQLDatabase tab is the database User Name, not your station's User name.

## Creating and updating the HSQL database password

Each controller ships from the factory with a default HSQL database password and upgrading an AX station to an N4 station resets the HSQL database password back to the factory default. While the default password initially works, as soon as you install or upgrade a controller and its software, you should change this password to a unique and strong string.

**Prerequisites:** You have just installed a new controller or upgraded an existing controller from AX to N4. You are using Workbench running on a PC that is connected to the network that services the controller.

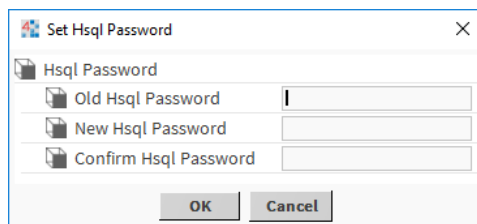
The password must contain a minimum of 10 alphanumeric-only characters along with these special characters: @ # ! \$ % & + > < ] [ ] ( . The password strength check requires at least: 1 digit, 1 upper case character and 1 lower case character.

**Step 1** Connect to the controller station using Workbench.

**Step 2** Expand **Config**→**Drivers**→**RdbmsNetwork**.

**Step 3** Right-click **HsqlDbDatabase** and click **Actions**→**Set Hsql Password**.

The **Password** window opens.



**Step 4** Enter the Old Hsql Password, configure a strong new password and click **OK**.

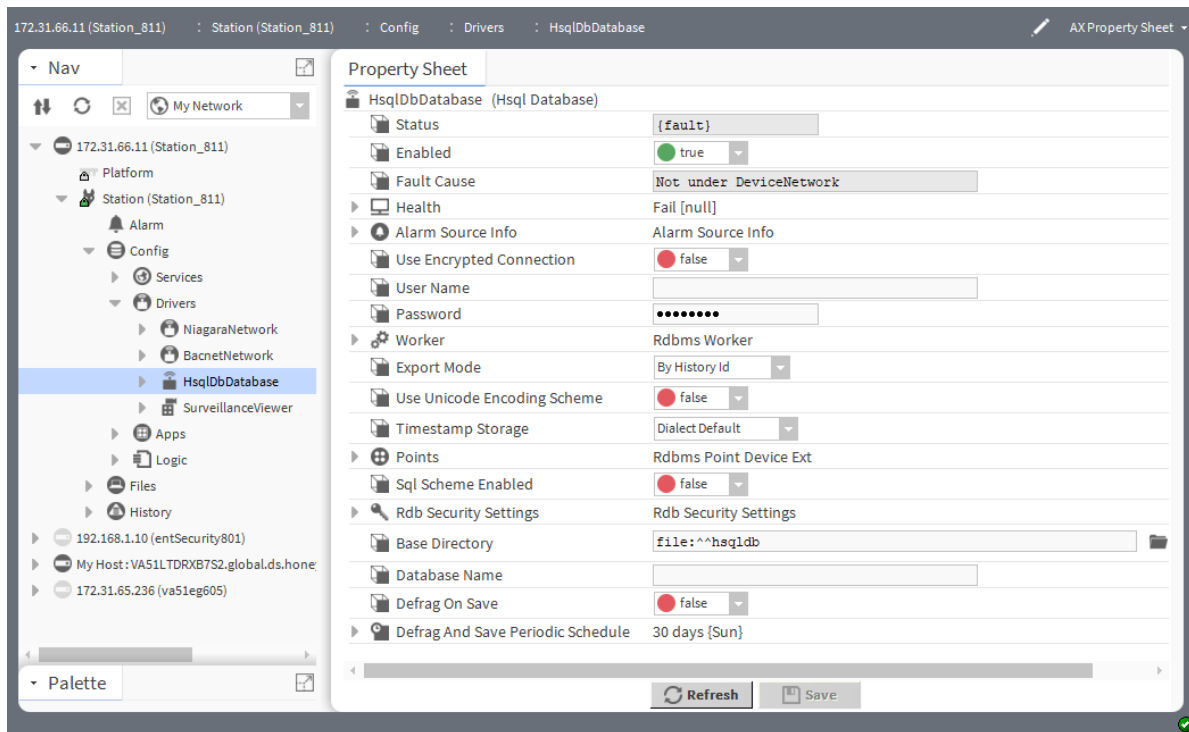
If you are changing the password after installing a new controller or after upgrading from AX to N4 the default password is Niagara123.

**Step 5** Make a note of the new password and store it in a safe place.

As a best practice, consider changing this password on a regular basis.

**Step 6** Follow these steps, if you are using an existing N4 station. Open the device's **AX Property Sheet** by right-clicking on **HsqlDbDatabase** followed by clicking **Views**→**AX Property Sheet**.

The **AX Property Sheet** view opens.



Step 7 Enter the **User Name** as SA, **Password** should be blank, and click **Save**.

Step 8 Right-click **HsqlDbDatabase** and click **Actions→Ping**.

The **Health** property updates based on the ping results.

## Configuring network device passwords

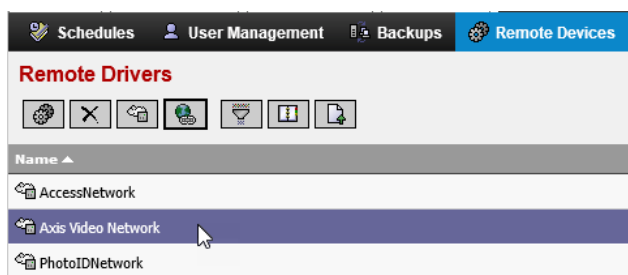
The devices on the station network may require password reentry in the migrated stations. For example, a camera or DVR may have a unique device password that needs to be re-entered because it was cleared during migration process.

**Prerequisites:** Your PC is connected to the network with the remote controllers.

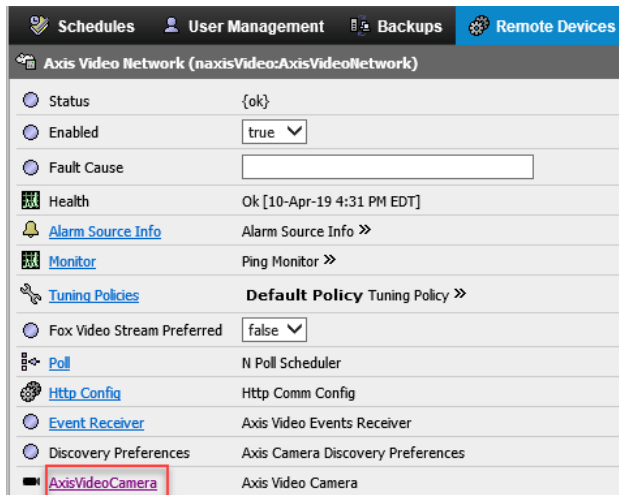
Step 1 From a browser (web UI), make a connection to the remote controller station.

Step 2 Navigate to the **Remote Drivers** view (**Controller Setup→Remote Devices→Remote Drivers**).

**NOTE:** The following steps can be for any network device that requires a password. The steps below show an example for a video camera device.

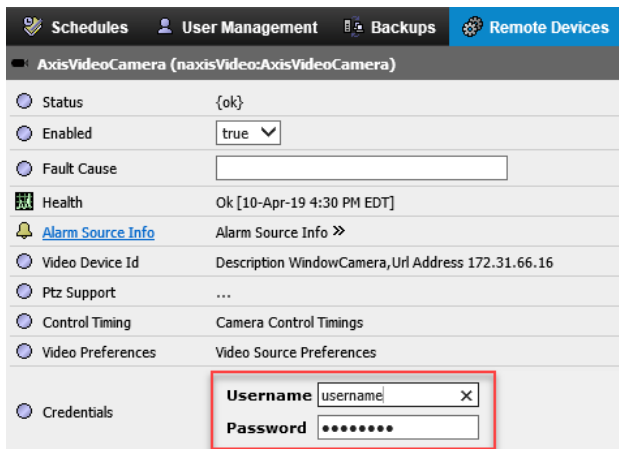


Step 3 For each network driver that may require a password, select the driver, click the **Hyperlink** button (🌐) on the menu and navigate to the device in the network (for example a Camera).



The screen capture shows this link for an Axis camera.

**Step 4** To display and update the device properties, click the device link.



**Step 5** Update the device password and click **Save**

The device password is updated.

## Deleting the old certificates

To promote secure communication in Niagara 4 it is recommended that you install new TLS certificates. This procedure deletes the old certificates. Perform these steps for each station, Supervisor and all remote stations.

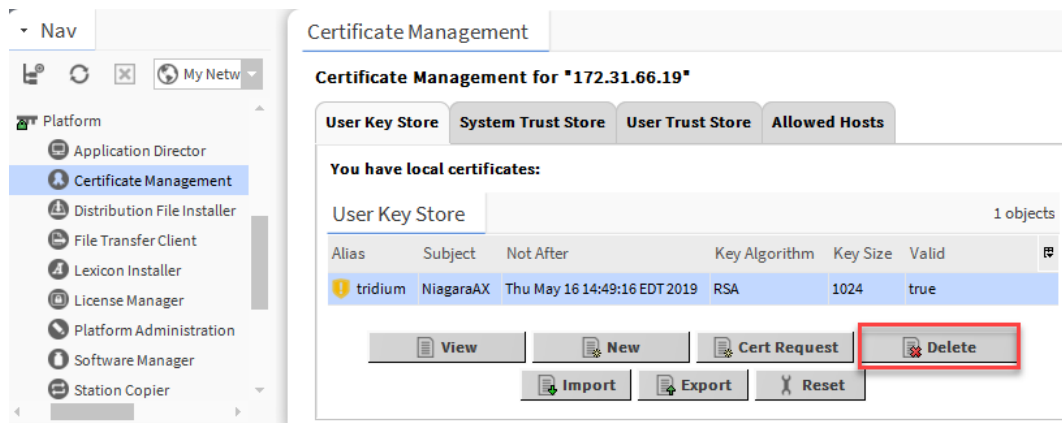
**Prerequisites:** You are using the Supervisor PC running Workbench. All stations are idle.

**NOTE:** Subsequent procedures assume that this installation uses default self-signed certificates. If the company uses signed certificates (the most secure configuration), you will need to create a new root CA certificate, create a new server certificate for each platform/station, use the root CA certificate to sign each server certificate and install each signed server certificate after completing the migration.

While you may delete certificates using the browser (web UI), this procedure manages all certificate processes using Workbench.

**Step 1** Open a platform connection to the Supervisor PC or remote controller (**File→Open→Open Platform**).

**Step 2** Expand the **Platform** node and double-click **Certificate Management** in the Nav tree.



Step 3 In the User Key Store, select the certificate, click **Delete** (as shown above) and click **Yes** to confirm the deletion.

Step 4 Select the Allowed Hosts tab, select an allowed self-signed certificate, click **Delete** and click **Yes** to confirm the deletion.

This action deletes the certificate.

Step 5 Restart the station.

Step 6 Perform these steps in the Supervisor and each remote station.

## Reconnecting the Supervisor and remote stations

This procedure reconnects the remote stations to the Supervisor station.

**Prerequisites:** You have deleted all old AX certificates from all stations.

Step 1 Using the web UI, make a connection to the Supervisor station and accept the self-signed certificate.

Step 2 Click **System Setup** → **Remote Devices** → **Station Manager**.

The **Edit** window opens.

The 'Edit' window shows configuration options for connecting to a remote station. It includes fields for Station Name, Enabled status, Address, Credential Store (Username and Password), Use Foxs status, and Fox Port. The 'Continue to Remote Configuration...' button is at the bottom.

Station Name	entSecurity602
Enabled	true
Address	172.31.66.19
Credential Store	UsernameAndPassword
Username	admin
Password	*****
Use Foxs	true
Fox Port	4911

Step 3 To re-establish the connection between the Supervisor and each subordinate station, enter the remote station credentials.

Step 4 Approve each station's self-signed certificate.

Step 5 For each subordinate station, do a **Join**, as described in "Joining a controller station to the Supervisor station" in the *Niagara Enterprise Security Installation and Maintenance Guide*

- Step 6 To set up data in each remote station, do a **Replicate**, as described in the “Replicating a configuration” topic in the *Niagara Enterprise Security Installation and Maintenance Guide*.

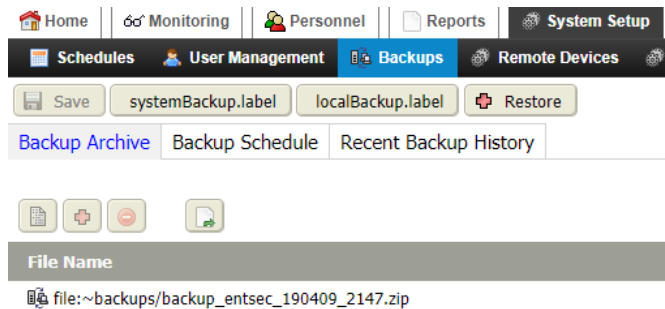
## Restoring the BackupService schedules

This procedure describes how to restore the BackupService schedules.

**Prerequisites:** You are connected to the Supervisor station using a browser (the web UI).

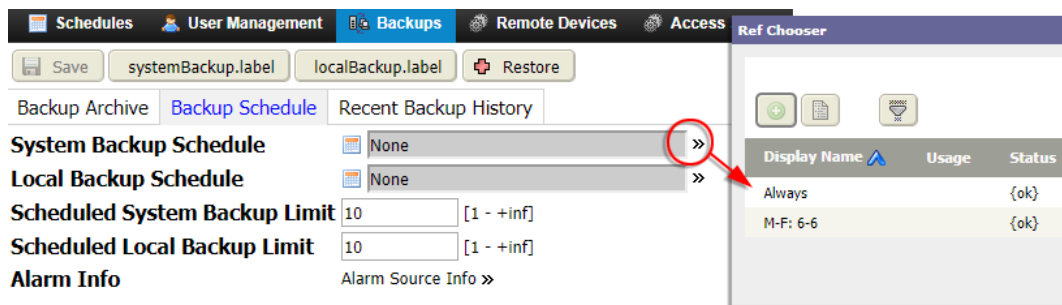
- Step 1 Click **System Setup**→**Backups**.

The **Backups** view opens.



- Step 2 Click the **Backup Schedule** tab.

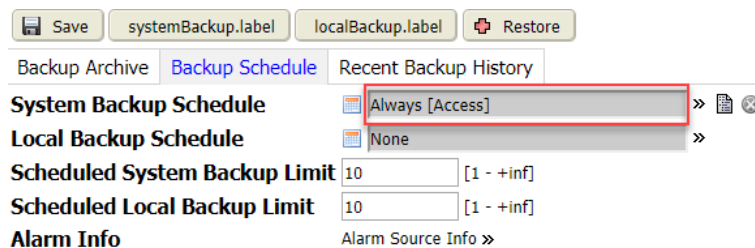
The **Backup Schedule** view appears.



- Step 3 To select the backup schedule, click the Ref Chooser chevron (>>)

The **Ref Chooser** window opens.

- Step 4 To assign a schedule to the backup, select the desired schedule from the table and click **Ok**.



Repeat this procedure for all the migrated stations.





# Chapter 5 Connecting a Supervisor station to a legacy controller station

## Topics covered in this chapter

- ◆ 2. Adding a remote controller 2.3 station
- ◆ 3. Logging in to the Supervisor from the controller
- ◆ 4. Connecting from the Supervisor to the NiagaraAX-3.8 legacy security station

Niagara Enterprise Security connections from Niagara 4- based stations to NiagaraAX (JACE-6 controller) stations were not possible before the release of Niagara 4.8. With Niagara Enterprise Security 4.8, stations can now connect and join to Niagara Enterprise Security 2.3 JACE-6 controllers by following the instructions included in this document.

The goal of this process is to have the Niagara Enterprise Security N4Supervisor connect, join, and replicate with a subordinate JACE-6 controller that is running Niagara Enterprise Security 2.3. After you complete this procedure, the remote controller is connected and communicating with the Supervisor station as a subordinate. With this relationship and communication established, you can join and replicate using the same procedures that describe those tasks for JACE-8000 security controllers. Refer to *Station join best practices* and *Joining a controller station to the Supervisor station* topics for details. Also, refer to [Wire compatibility, page 14](#) for details about communication and feature support between the two versions of Niagara.

To establish communication (connect) between the Niagara Enterprise Security 4.8 Supervisor station and a legacy NiagaraAX JACE-6 controller station, you need to use both Workbench and a browser to configure the following:

1. Prepare the Niagara Enterprise Security 4.8 Supervisor station (add a user, configure WebService and FoxService).
2. Discover and add the remote NiagaraAX controller station to the Supervisor station database.
3. Establish an authenticated user connection from the remote NiagaraAX controller station to the Niagara Enterprise Security 4.8 Supervisor station.
4. Create the proper Supervisor – subordinate relationship between the two controller stations.

Each of these procedures are detailed in specific tasks that follow.

## 2. Adding a remote controller 2.3 station

Use this procedure to initiate the connection between Niagara Enterprise Security 4.8 stations and AX-3.8 stations. Authentication fails on the initial attempt to connect but may complete in a subsequent procedure.

**Prerequisites:** The Supervisor station is configured to accept the NiagaraAX-3.8 user connection.

**Step 1** Using the browser of your choice and the Java web launcher app, open a station connection to your Supervisor and controller stations using the user with admin rights.

**Step 2** To find the AX Stations to connect to from the N4 Supervisor, navigate to **Remote Devices** and run a discovery job.

The station appears in the **Discovered** pane.

**NOTE:** If discovery does not find the station, manually add the station (click the **Add** button, and provide the AX controller's IP address and credentials).

**Step 3** Select the station to add and click the add (+) button.

The **Add Station(s)** window opens.

**Add Station(s)**

The following properties configure the connection from the **local station to the remote station** (Username/Password must already exist on the remote station):

**Enabled**

**Credential Store**

**Username**

**Password**

**Use Foxs**

**Fox Port**

What is the role of the remote station from the perspective of the local station?

**Desired Role**

**Ok** **Cancel**

The following properties configure the connection from the **remote station back to the local station** (Username/Password must already exist on the local station):

**Enabled**

**Credential Store**

**Username**

**Password**

**Use Foxs**

**Fox Port**

- Step 4 Starting with the left side of the window, enter the **Username** and **Password** for Supervisor to log in to the remote station (these credentials must already exist on the remote controller).
- Step 5 On the right side of the window, enter the **Username** and **Password** for the newly created user so that the remote AX-3.8 controller can log in to the Supervisor (these credentials must already exist on the Supervisor).
- Step 6 Make sure that the **Desired Role** property is set to **Subordinate** and click **Ok**.

The Supervisor runs the add-station job and adds the remote station to the Supervisor database.

**NOTE:**

An **Authentication Failure** message displays at the completion of the job. This is because of the different credential storage capabilities in the two different versions. The following steps provide a way to resolve this from the remote controller and complete the connection.

Home Monitoring Personnel Reports System Setup Threat Levels

Schedules User Management Backups Remote Devices Access Setup Intrusion Setup Alarm Setup Miscellaneous

Station Name	Host Name	Scheme	Fox Port	Status	Actual Role	Role Status
entSecurity602	172.31.66.19	foxs	4911	{ok}	Peer	{fault} [entSecurity602]: SysDef extension not in a valid state to change roles: {down}

Discovered

Station Name Host Name Scheme Fox Port Already Exists

- Step 7 Navigate to **System Setup→Remote Devices→Certificate Management** and approve the remote controller certificate.

### 3. Logging in to the Supervisor from the controller

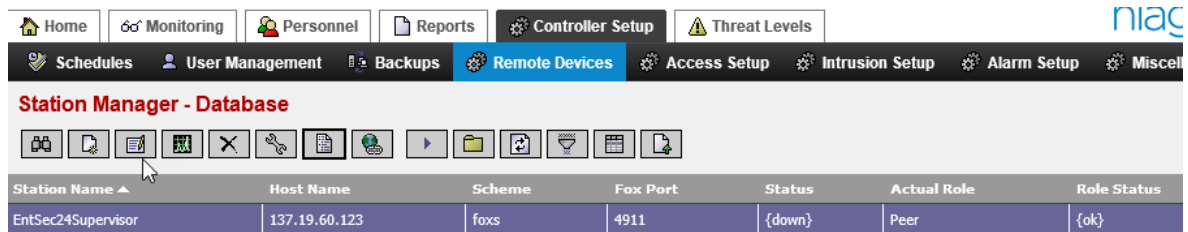
These steps connect from the NiagaraAX-3.8 legacy security station to the security Supervisor and authenticate the connection using the newly-created credentials for a user with **AXDigestScheme** authentication.

**Prerequisites:** The record for the remote legacy controller is added to the Niagara Enterprise Security 4.8 Supervisor station database.

- Step 1 In the browser, connect to the remote NiagaraAX controller: from the main menu, select **Controller Setup→Remote Devices** and click on the **Certificate Management** view, approve the Supervisor certificate.

- Step 2 From the main menu, select **Controller Setup**→**Remote Devices** and click on **Station Manager** to display the **Station Manager Database** view.

The Supervisor station displays as a row in the table view.



- Step 3 Select the Supervisor station and click the Edit icon (✎).

The **Edit** window opens.

- Step 4 Enter credentials for the newly created NiagaraAX user, verify that the other properties are correct for the connection and click **Continue to Remote Configuration**.

The connection to the remote station (Supervisor) continues and the **Remote Configuration** window appears.

- Step 5 Click **Cancel** in the **Remote Configuration** window.

The system closes the window. To authenticate the connection, you must complete the process with the following task.

## 4. Connecting from the Supervisor to the NiagaraAX-3.8 legacy security station

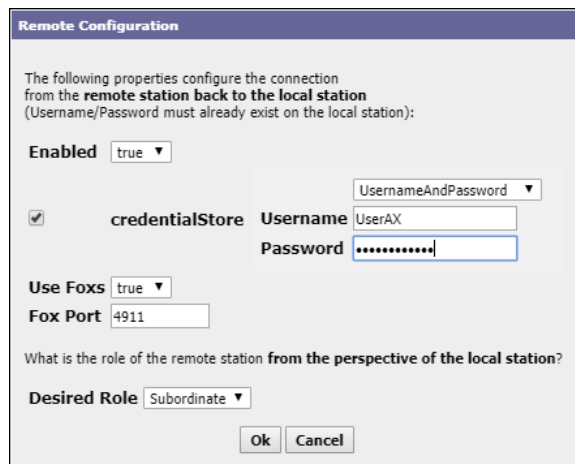
The following task describes how to connect from a configured legacy controller station (running NiagaraAX-3.8) to a properly configured Niagara Enterprise Security 2.4 Supervisor.

**Prerequisites:** The legacy controller station has completed a user login to the Niagara Enterprise Security 2.4 Supervisor station.

**Step 1** In the browser, connect to the Supervisor and navigate to the station database view (**System Setup**→**Remote Devices**→**Station Management**)

**Step 2** Select the remote NiagaraAX-3.8 legacy security station and click the Edit icon (). These fields should already be populated. Verify the fields and click **Continue to Remote Configuration**.

The **Remote Configuration** window opens.



The **Remote Configuration** window is shown. It contains the following fields and options:

- Enabled:** A dropdown menu set to **true**.
- credentialStore:** A checkbox that is checked.
- Username:** A text field containing **UserAX**.
- Password:** A text field containing **\*\*\*\*\***.
- Use Foxs:** A dropdown menu set to **true**.
- Fox Port:** A text field containing **4911**.
- What is the role of the remote station from the perspective of the local station?:** A dropdown menu set to **Subordinate**.
- Buttons:** **Ok** and **Cancel** buttons at the bottom.

**Step 3** Enter the newly created user credentials and click **Ok**.

The **Remote Configuration** window closes, the configure job runs and establishes the connection with the correct relationship between Supervisor and subordinate. You are ready to proceed with station **Join** and **Replicate** procedures.

Once the Niagara Enterprise Security 4.8 Supervisor station connects to the NiagaraAX-3.8 legacy station, no further migration of the legacy station is required. The legacy station cannot be migrated to Niagara Enterprise Security 4.8 until the JACE-6 is replaced with newer hardware.

# Chapter 6 Migration reference

## Topics covered in this chapter

- ◆ Imports
- ◆ API changes
- ◆ Primitives
- ◆ Security Manager
- ◆ Example Program object fix

A number of changes to NiagaraAX Program objects (components) need to be made to allow them to run under Niagara 4. The N4 migration tool can make some of these changes for Programs as part of the station migration process.

However, other changes often require post-migration work on certain Programs in the (offline) migrated station.

## Imports

The first step in converting Program objects to run under Niagara 4 is to update imports to declare dependencies on the appropriate runtime profile JAR files. In most cases, this will be the `rt` runtime profile JAR file for the module (baja and nre do not have a runtime profile extension).

If your Program object was run through the N4 migration tool as part of a station migration, this change will have been made for you.

## API changes

If your Program objects use certain APIs that have had breaking changes, they will need to have their Program code updated and recompiled using the new Niagara APIs.

Most notable are the "Collection API/Cursor", "Alarm API", "History API", and "Logging API". For more information on these changes and how to update your code, see the *Niagara Developer Guide* for each of these API changes.

Also, note `getProgram()` was deprecated starting in AX-3.5 in order to support compiling Programs into Program Modules. It has been removed for N4.0. While in the past, Program objects using this method would still compile and run, they now require conversion to use `getComponent()` instead.

## Primitives

Slots that are defined as `baja:Boolean`, `baja:Double`, `baja:Float`, `baja:Integer`, `baja:Long` and `baja:String` now return their Java primitive types.

This means that you no longer need to call `getBoolean()`, `getDouble()`, `getFloat()`, `getInt()`, `getLong()` or `getString()` to cast the values of these slots to primitive values.

For example, for a slot defined on a Program as: `Name=temperature, Type=baja:Double`

NiagaraAX Program object:

```
double temp = getTemperature().getDouble();
```

Niagara 4 Program object:

```
double temp = getTemperature();
```

## Security Manager

Niagara 4 utilizes the Java Security Manager, which puts restrictions on what Program objects may do. Program objects interacting with the station's component tree should be largely unaffected by the Security Manager.

### File reading/writing

A restriction has been put on file reading and writing to only allow read-from and write-to the station\_home directory (file: ^).

### Runtime.exec()

The ability to call external executables is extremely useful in certain situations, however the use of `Runtime.exec()` can allow potentially malicious code to be executed. As such, several restrictions are placed on it to help protect your system.

Only station super users can add and edit Program objects. In NiagaraAX, there was a flag/entry to change this behavior in system.properties. In Niagara 4, this ability has been removed.

Program objects can no longer directly call `Runtime.getRuntime().exec(command)`. Instead, a wrapper called `ProgramRuntime` behaves the same way as `java.lang.Runtime`, except that it takes the Program object as an additional parameter. Commands executed by `ProgramRuntime` are logged and audited.

Additionally, to enable the use of `ProgramRuntime`, the hidden slot `allowProgramRuntimeExec` on the station's **ProgramService** must be set to true.

**NOTE:** Only standalone Program objects can use `ProgramRuntime.exec()`. Program objects that have been compiled into Program Modules cannot call this function.

An example of this in Program code is below

NiagaraAX Program object:

```
Runtime.getRuntime().exec("notepad.exe");
```

Niagara 4 Program object:

```
ProgramRuntime.getRuntime().exec(this, "notepad.exe");
```

## Example Program object fix

The following is a simple example fix for a Program object included in the widely-distributed NiagaraAX demo station. It is one of several Programs flagged with a "WARNING unable to compile" entry when AX-3.8 station backup .dist file for the demo station is used as source in the N4 migration tool.

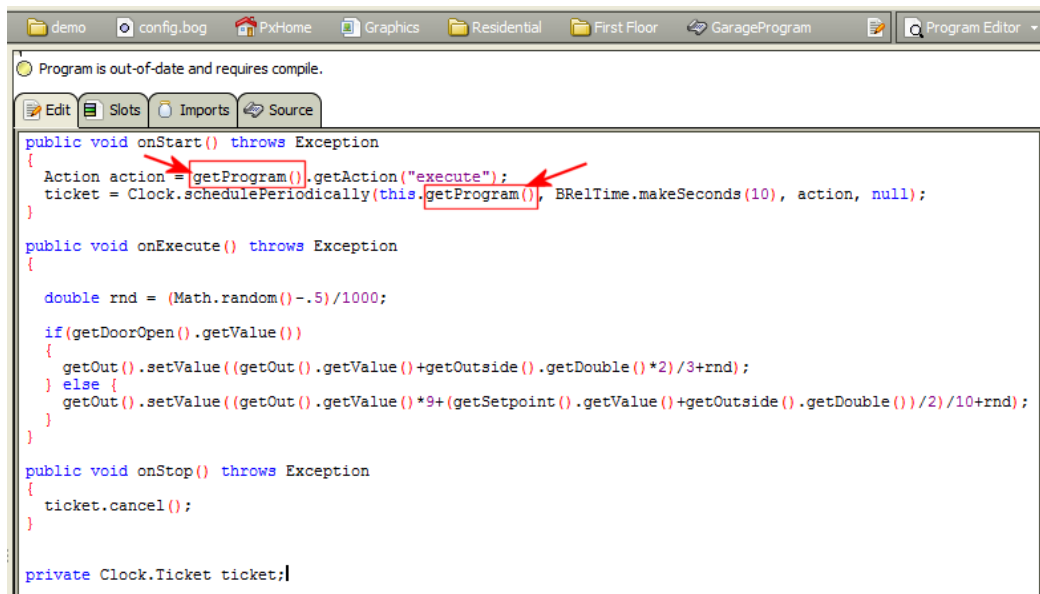
A related snippet from the migration report (log file) looks like below.

```
WARNING unable to compile Program object PxHome.Graphics.Residential.First Floor.
GarageProgram
C:\Users\e333988\Niagara4.x\temp\Prog_ea44c5d3b904631ea44c5d3b904631.java:40: error:
cannot find symbol
    Action action = getProgram().getAction("execute");
                    ^
symbol:   method getProgram()
location: class Prog_ea44c5d3b904631ea44c5d3b904631
```

This error relates to use of `getProgram()`, as described in [API changes, page 85](#).

Opening the migrated "demo" station in your N4 Workbench, you can follow the ORD given in the warning, and open the **Program Editor** view for that Program ("GarageProgram"), as shown in the following figure.

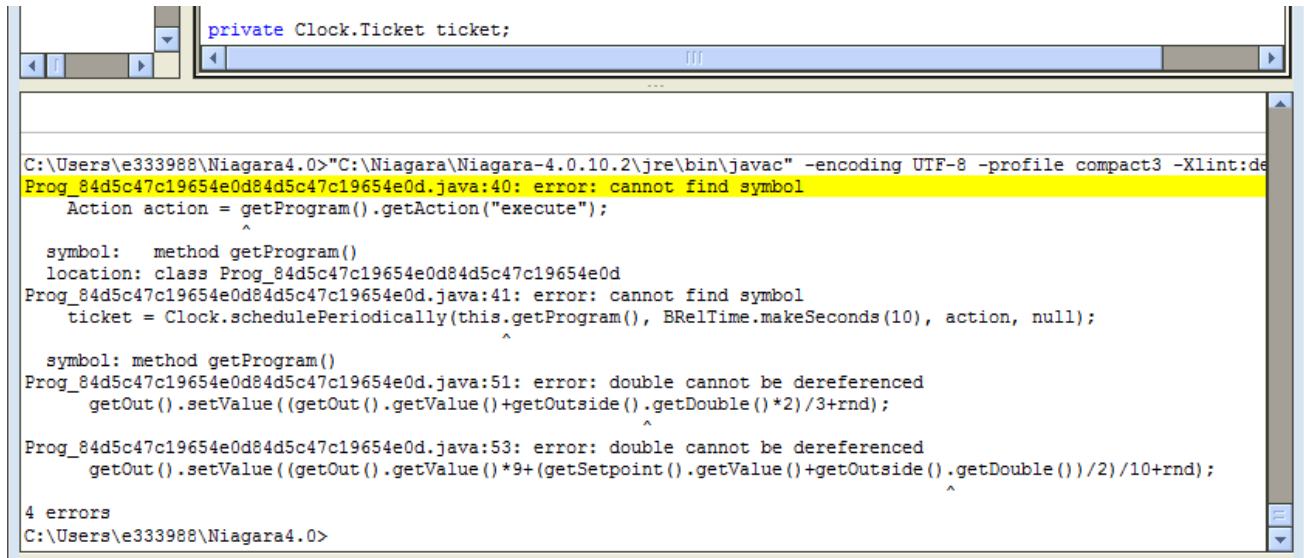
Figure 22 Example Program with issues from migrated "demo" station



The WARNING snippet resulted from use of the now-obsolete `getProgram()`, which must be replaced by `getComponent()`. Also note the Program status: "Program is out of date and requires compile."

If you compile the Program now without making any changes, various errors (4) appear in the console area at the bottom of the Workbench window, as shown below.

Figure 23 Example errors from a compile before making any Program changes



After replacing the two `getProgram()` instances to `getComponent()`, saving and then recompiling again, errors are reduced to two—related to use of `getDouble()` for primitives (Figure 24 Figure 28, page 88).

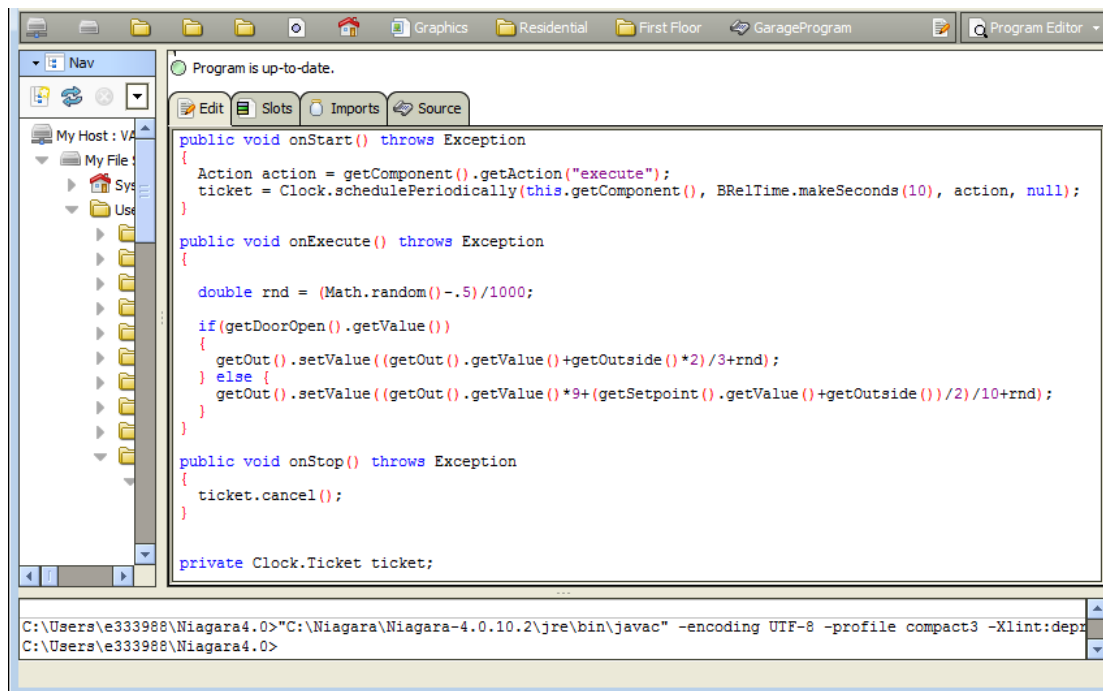
Figure 24 Example Program with remaining issues from primitive syntax errors



This is no longer necessary, as explained in the section [Primitives, page 85](#). To fix, simply remove the text shown marked above.

As shown below, now after resaving the Program and recompiling, all errors are gone.

Figure 25 Example Program object after fixing all issues and recompiling.



Now note the status of the Program is: "Program is up-to-date", and there are no errors reported in the bottom console area after the last compile and save.



