

Why can't I log onto my Station in Niagara 4.14?

How to modify Users to transfer a station in Niagara 4.15 – Niagara 4.15 Bog File Encryption Changes

1) Creating a new Station:

When a new station is created in Workbench, the Encryption Method must be set up. A separate, custom Passphrase can be chosen for the admin User, or the existing Passphrase that was created when Workbench was installed can be used. Failing to set the Encryption correctly (and remembering it when trying to open the station after deployment) will result in the Station not being accessible:

New Station Wizard

New Station Wizard

Station Admin Password Configuration

Username	Role(s)	Modified?
admin	admin	

Set Password

Station Encryption Options ?

Encrypt passwords in station in user home

Use the system passphrase

Use a custom passphrase (enter below)

Password for Station BOG File

Confirm password for Station BOG File

Final Actions

When 'Finish' is pressed, save the station and

open it in user home

copy it to the local platform with Station Copier

close the wizard

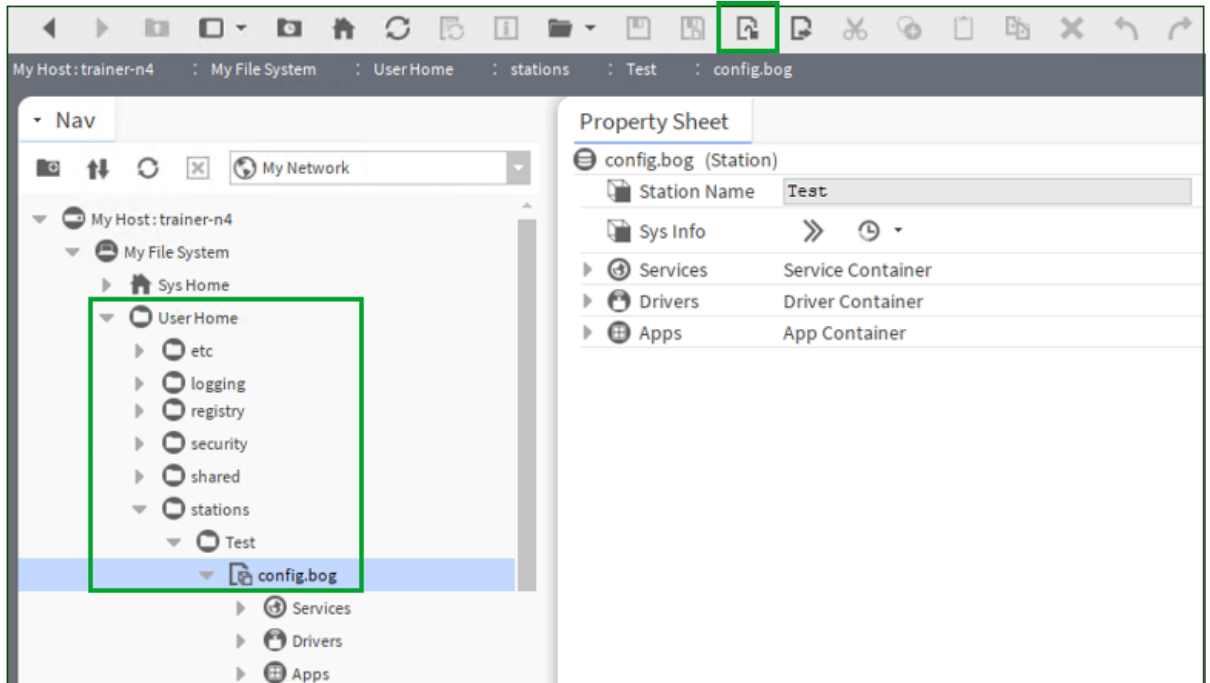
Back Next Finish Cancel

2) Copying an existing Station into a Controller following and upgrade to v4.15:

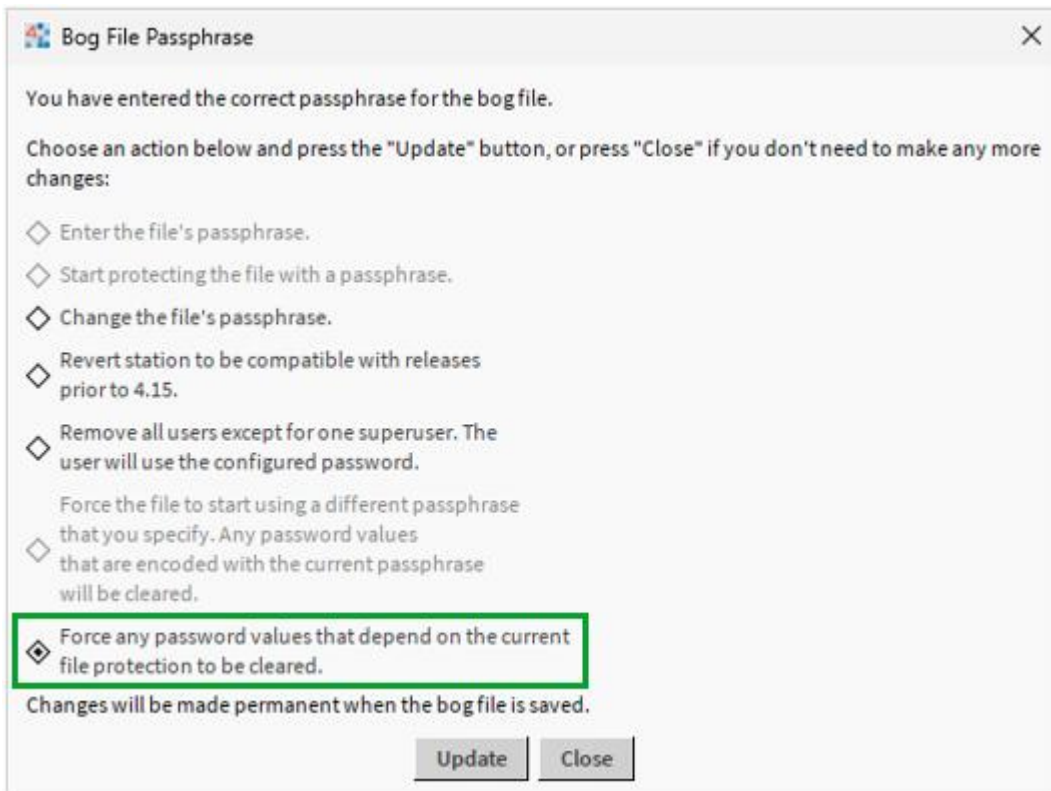
The existing Station Encryption must be modified so the Station will be

accessible once copied. This is done in stages on the OFFLINE station after the upgrade has taken place.

1. Upgrade the Station to v4.15 and open the Offline Station in User Home, then click on the Passphrase Unlock icon at the top

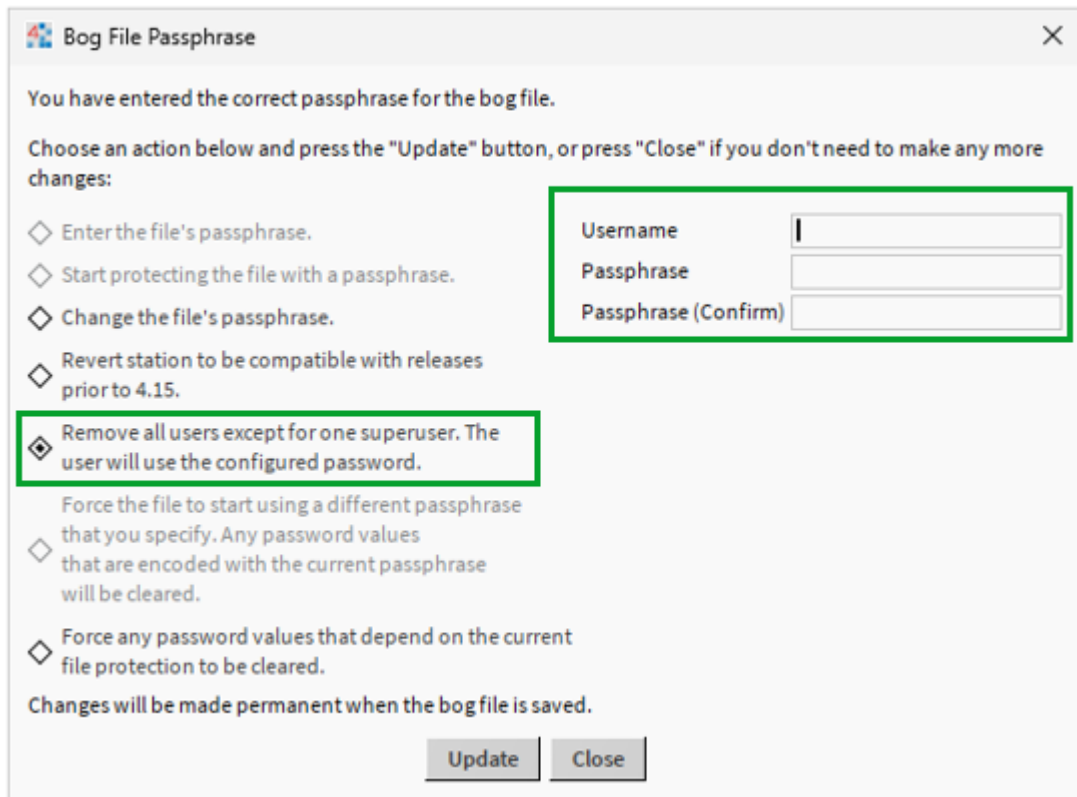


2. De-encrypt the users - Select 'Force any password values that depend on the current file protection to be cleared'.



3. Re-encrypt the admin User – select 'Remove all users except for one

superuser. The user will use the configured Password'. Set up the username and password using the boxes on the right (*they currently say username and passphrase, but the passphrase is actually the password for the user*)



4. Save the Config.bog file and transfer the Station using the Station Copier. The admin User will be accessible with the credentials entered in step 3 above.

