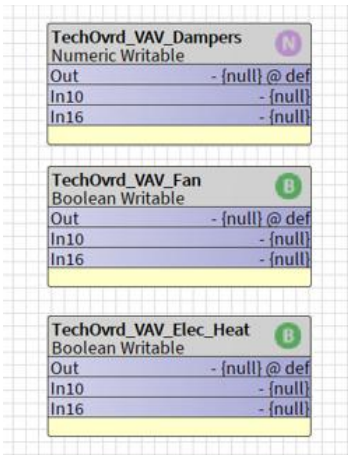


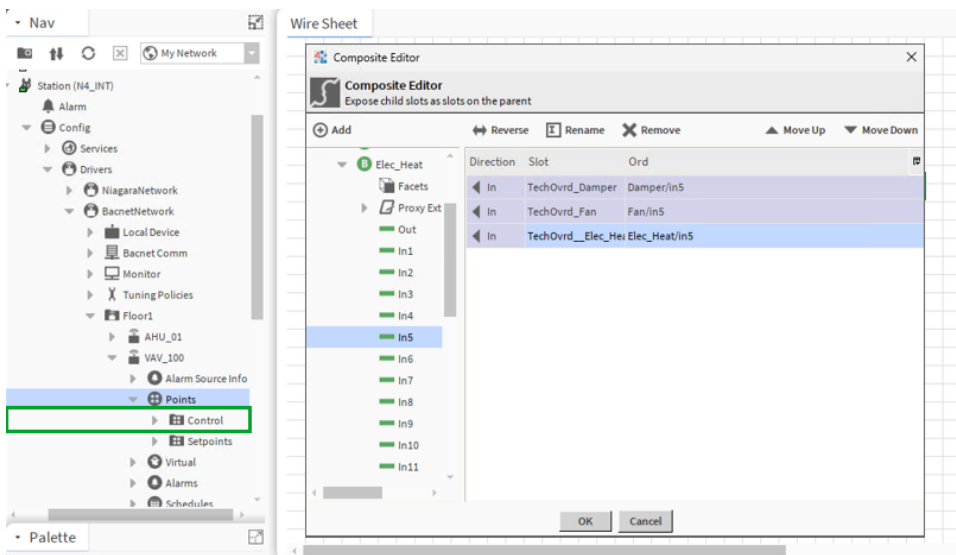
Creating Multiple Override Buttons

Multiple components or objects can be overridden from a one click command, but writable components must be created first in preparation for this – please follow the steps below:

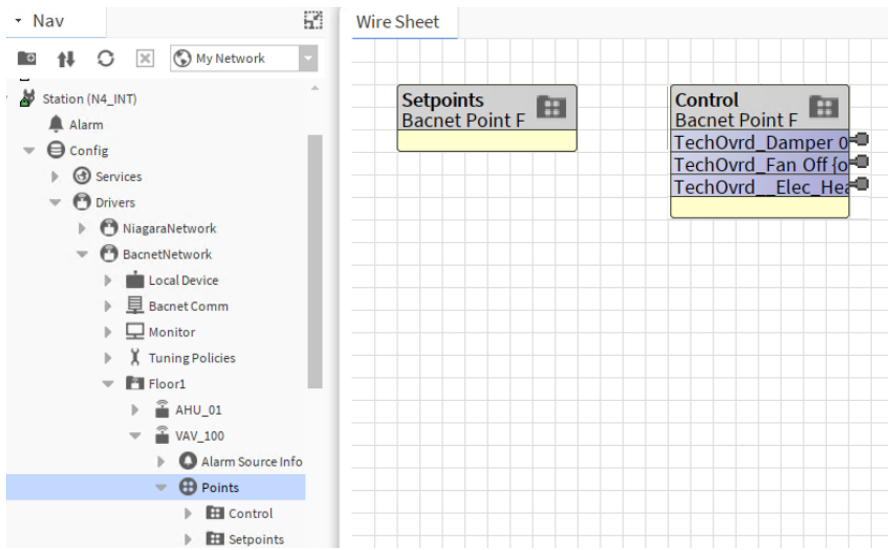
1. Create writable components on a wiresheet of your choice



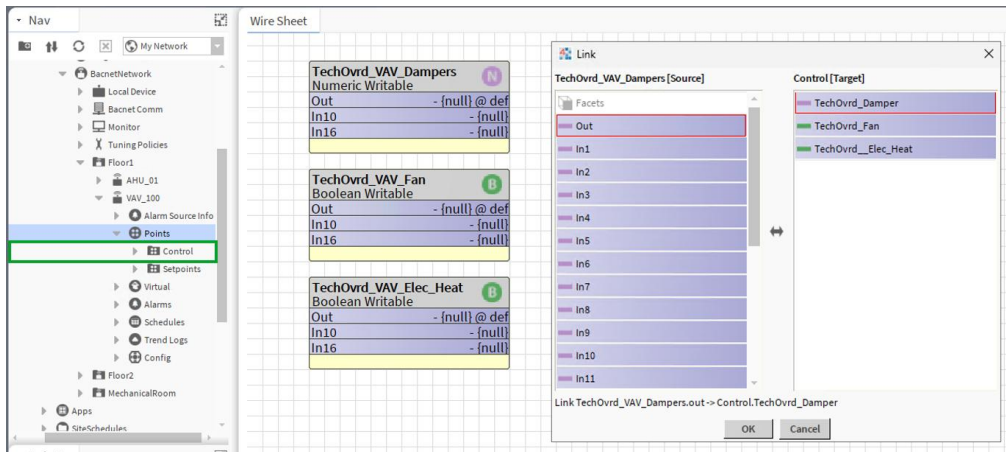
2. Locate the folder where the components to be overridden are located in the NavTree and select the Wiresheet View, then right click on the folder on the Wiresheet and select COMPOSITE to exposed the composite editor and add the relevant inputs



3. The exposed slots are now visible on the component and ready to link



4. Return to the original Wiresheet where the Override components were created and link mark the Overrides to the Composite Folder listing the Components to be overridden



5. The Override Buttons will now override all components added in the composite folder on one click

